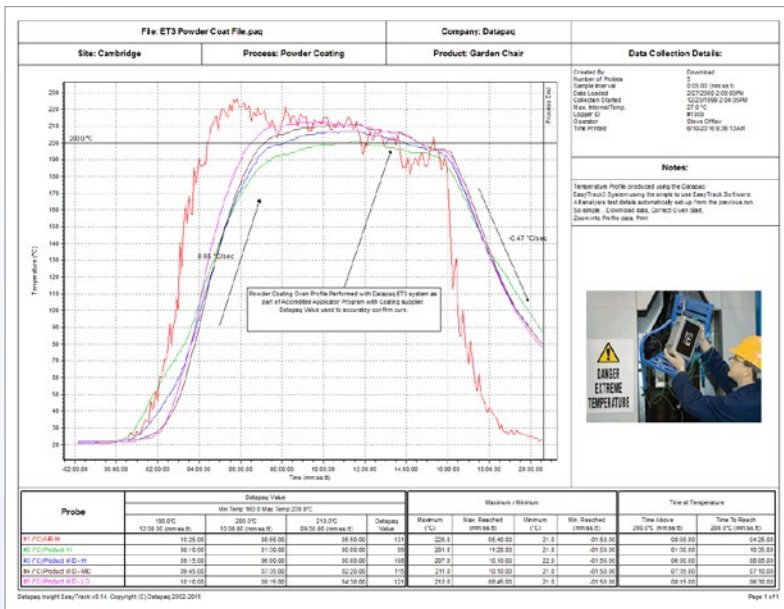
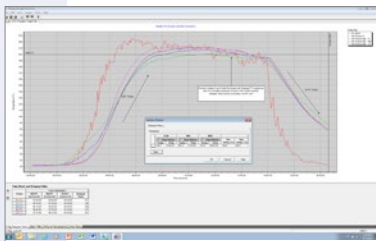


DATAPAQ® EasyTrack® Insight™ Software



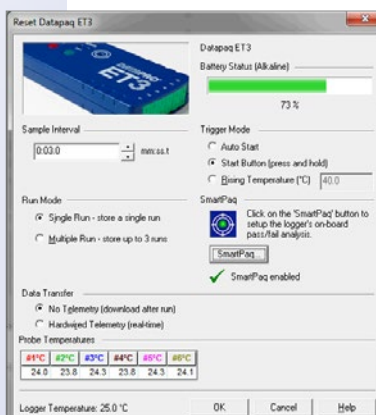
EasyTrack Insight standard single page report



EasyTrack Insight software



ET3 logger SmartPaq* – “Pass/Fail” indication from logger



EasyTrack Insight Professional Re-set Dialogue



Live software language change

EASYTRACK INSIGHT & EASYTRACK INSIGHT PROFESSIONAL SOFTWARE

Easy to Use, Intuitive and Flexible

Key to the value of the DATAPAQ EasyTrack3 oven profiling system is the EasyTrack Insight software. EasyTrack Insight provides the means to both control the data logger operation and, as its name suggests, provide a clear insight into what the temperature profile data you collect is telling you. Insight software has been designed to quickly and efficiently convert raw data into information that helps you understand your process, control it and improve it. Building on the established EasyTrack Insight platform, the new system comes with features making profiling even easier than before. EasyTrack Insight Professional software now offers more sophisticated analysis and reporting, ideal for paint suppliers or coaters trying to drive the quality of the service or product they supply even further.

NEW

EASYTRACK INSIGHT

- Live software language change
- Auto software boot on connection of ET3 datalogger
- Slope markers – ramp rate calculation
- Read digital calibration certificate directly from logger
- Interrogate and even send logger diagnostics to tech support
- Digital QRG & logger status tutorials

EASYTRACK INSIGHT PROFESSIONAL

- Advanced logger reset
- Multiple run – up to 3 back to back runs
- SmartPaq – “pass” or “fail” indication on profile direct from logger at oven exit
- Process files – process template files, making runs quick, efficient and complete
- Enhanced analysis and reporting features give you even more power

* EasyTrack 3 Professional system only

TECHNICAL SPECIFICATIONS

	EasyTrack2 Standard & Advanced	EasyTrack3 Standard & Advanced	EasyTrack3 Professional
Function	Insight EasyTrack Original SW5210 V7.0	Insight EasyTrack SW5210 V8.50	EasyTrack Insight Professional SW5210-P V8.50
Basic Functions			
Windows 32 (Explorer file handling)	Yes	Yes	Yes
Selectable probe traces	Yes	Yes	Yes
View temperature data	Yes	Yes	Yes
Max temperature/time reached	Yes	Yes	Yes
Time at temperature	Yes (×3 cure temperatures)	Yes (×3 cure temperatures)	Yes (×3 cure temperatures)
DATAPAQ value “index of cure” basic	Yes (×1 cure schedule)	Yes (×1 cure schedule)	Yes
Logger alarms (low battery, over temp, invalid data)	Yes	Yes	Yes
Logger over temp protection	Yes	Yes	Yes
Logger internal temp download	Yes	Yes	Yes
Calibration expiry warning	Yes	Yes	Yes
Oven start correction “manual”	Yes	Yes	Manual (time/temp)
Process complete marker “manual”	Yes	Yes	Yes & automatic
Probe alignment correction	No	No	Yes manual
Context sensitive help	Yes	Yes	Yes
Full-/process-/mouse zoom	Yes	Yes	Yes
Data Analysis			
Import data	From clipboard	From clipboard	Yes
Analysis alarms	No	No	Yes basic
Graph overlay	Yes (×1)	Yes (×1)	Yes (×3)
Data Reporting			
Standard 1 page report	Yes	Yes	Yes
Print report to PDF	Yes	Yes	Yes
Memos, notes	Yes	Yes	Yes
Image insertion into report	Yes	Yes	Yes
Data export	Yes	Yes	Yes
Paqfile viewer	Yes	Yes	Yes
Paqfile auto E-mail	Yes	Yes	Yes
Download logger internal temperature	Yes	Yes	Yes

Datalogger	ET2 Standard & Advanced	ET3 Standard & Advanced	ET3 Professional
Insight New Functions	SW5210V7.0	SW5210V8.50	SW5210-P V8.50
Multi language interface	No	Yes	Yes
Auto logger detection	No	Yes	Yes
Logger reset - multiple run mode	No	No	Yes with ET3 up to 3
SmartPaq basic	No	No	Yes
Multiple file handling	No	No	Yes
Analysis TAB customization	No	No	Yes
Slope marker – gradient reporting	No	Yes	Yes
Advanced analysis (rise/fall & peak difference)	No	No	Yes
Area under curve	No	No	Yes
DATAPAQ value “index of cure” Adv.	No	No	Yes
DATAPAQ value parameter file (.dpv)	Read only	Read only	Save and read
DATAPAQ value wizard	No	No	Yes
Process file simple	No	No	Yes
Oven zones and distance axis	No	No	Yes (max 6 zones)
Probe map	No	No	Yes
Saved zoom	No	No	Yes
Thermograph/3 D graph	No	No	Yes
Profile report customized	No	No	Yes
Onboard logger calibration	No	Yes	Yes
Onboard quick reference guide	No	Yes	Yes
QRG/animated tutorials			
Onboard service diagnostics	No	Auto read/send	Auto read/send

Fluke Process Instruments

EMEA

Cambridge, UK
Tel: +44 1223 652 400
sales@flukeprocessinstruments.co.uk

Americas

Everett, WA USA
Tel: +1 425 446 6780
sales@flukeprocessinstruments.com

China

Beijing, China
Tel: +86 10 6438 4691
sales@flukeprocessinstruments.com.cn

Asia East and South

India Tel: +91 22 2920 7691
Singapore Tel: +65 6799 5596
sales.asia@flukeprocessinstruments.com

Worldwide Service

Fluke Process Instruments offers services, including repair and calibration. For more information, contact your local office.

www.flukeprocessinstruments.com

© 2019 Fluke Process Instruments
Specifications subject to change without notice.
06/2019 OT_ET3_insight_SW_DS_Rev.A_EN