



A Fluke Company

# EasyTrack<sup>®</sup>2 HITEMP

...the value PTFE and high temperature coating profiling solution

The EasyTrack<sup>®</sup>2 HITEMP system is a customized profile system based on the very successful original EasyTrack system, packaged specifically for polytetrafluoroethylene (PTFE) and other high temperature cure processes.

Combining the simplicity of the EasyTrack2 data logger, EasyTrack Insight<sup>™</sup> software and the high thermal performance characteristics of the TB5000-HT barrier, the EasyTrack2 HITEMP system provides an ideal profiling tool for OEM manufacturers and coating suppliers alike.

Temperature measurements can be made throughout the entire heating cycle from either product or oven environment. Such temperature profile information permits the optimization and control of the process and guarantees both the quality of the end product and efficiency of the manufacturing process.

## SYSTEM BENEFITS

**Improve quality by confirming cure to prevent:**

- *Undercuring*—Brittle PTFE with poor adhesion characteristics
- *Overcuring*—Low gloss PTFE or chalkie cosmetic appearance of black or darker PTFE surface coatings
- *Excessive Heat*—Degradation of PTFE coating with release of gaseous toxic by-products
- *Poor Temperature Uniformity*—Poor color and surface finish consistency

- **Rapid Fault Finding**

Identify problems within the oven, such as cold spots, quickly and efficiently. Identify the potential cause of problems, such as blocked ducting, leaky burner box, faulty fan, etc., allowing for rapid corrective action.

- **Process Optimization**

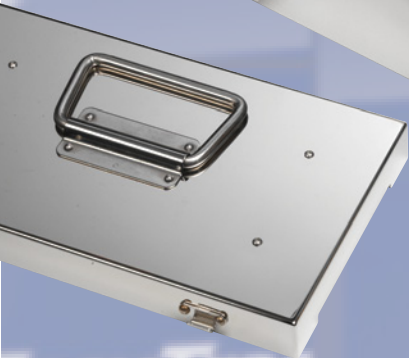
Optimize operating characteristics to maximize productivity (line speed) and fuel economy.

- **Validation**

Create documentary proof of process control for use with customers or quality audits (ISO9000 etc.)

## SYSTEM FEATURES

- Simple, quick and easy-to-use
- 6 channels measuring up to 500°C (932°F)
- Rugged enough to handle 300°C (572°F) for 3 hours
- Light enough to travel with ease
- Shared profile data with Paqfile Viewer or print to PDF functionality



# TECHNICAL SPECIFICATIONS



## DATA LOGGER

<b>6 Channel Logger:</b>	ET6061
<b>Thermocouple Type:</b>	K
<b>Sample Interval:</b>	0.05 seconds to 60 minutes
<b>Accuracy:</b>	±0.5°C (±0.9°F)
<b>Accuracy Protection:</b>	Cold junction compensation – accuracy guaranteed up to 85°C (185°F) logger temperature
<b>Resolution:</b>	0.1°C (0.1°F)
<b>Maximum internal operating temperature:</b>	85°C (185°F)
<b>Temperature Range:</b>	-150 to 500°C (-238 to 932°F)
<b>Memory:</b>	6000 data points per channel
<b>Memory Protection:</b>	Non volatile with hot data
<b>Data collection start:</b>	Start button/temperature trigger
<b>Battery (replaceable):</b>	9V PP3 Alkaline
<b>Battery Life:</b>	At 5 second intervals – 120 hours continuous measurement
<b>Communication Protocol:</b>	USB (CI 1033)
<b>LED Indicators:</b>	Always informed of status
<b>Battery Compartment:</b>	Magnetic catch – access without the need for tools

## THERMAL BARRIER TB5000 HT

Fitted with high temperature probe exit seal

<b>Weight:</b>	6.2 kg (13.6 lb)
<b>Dimensions (H x W x L):</b>	130 x 190 x 292mm (5.1 x 7.4 x 11.4 inch)

Temperature	100°C (212°F)	150°C (302°F)	200°C (392°F)	250°C (482°F)	300°C (572°F)	400°C (752°F)
Time (hours)*	14.5	6.5	4.5	3.5	3.0	0.33

**Heatsink:** 2 x TB1001

**Thermal Duration:**

\* Protection quoted at constant environmental temperature

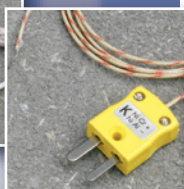
## THERMOCOUPLES

Type K specified to ANSI MC96.1 special limits of error (±0.4% or ±1.1°C whichever is greater)

<b>PA0182</b>	1.5m Heavy Duty Glass Fiber 0–500°C (32–932°F)
<b>PA0830</b>	1.0m Fast Response Glass Fiber 0–700°C (32–1292°F)
<b>PA0710</b>	1.0m Mineral Insulated 0–1200°C (32–2192°F)



PA0182



PA0830

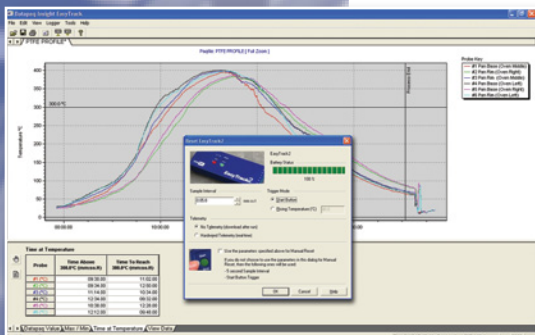


PA0710

## SOFTWARE

Analysis tools...to benefit your process

- Oven Start and Exit Correction
- Maximum Temperature and Time recorded
- Time At and Time to Reach Temperature
- Datapaq Value – Index of Cure
- View Data – Raw data measurement by measurement
- Mouse operated zoom
- Graph overlay
- Logger Reset options (Sample interval, start button or temperature trigger)
- Onboard battery charge indicator
- Data Import/Export and Auto Paqfile Email
- Concise single page validation report
- Local language available
- FREE Paqfile view software—download from [www.datapaq.com](http://www.datapaq.com)



## The Worldwide Leader in Temperature Profiling



**Europe and Asia**  
 DATAPAQ Limited,  
 Deanland House, 160 Cowley Road,  
 Cambridge CB4 0GU, UK  
 Tel: +44 (0)1223 423 141  
 Fax: +44 (0)1223 423 306  
 E-mail: [sales@datapaq.co.uk](mailto:sales@datapaq.co.uk)  
 Web: [www.datapaq.com](http://www.datapaq.com)

**North and South America**  
 DATAPAQ Inc,  
 187 Ballardvale Street,  
 Willimington, MA 01887, USA  
 Tel: +1 978 988 9000  
 Fax: +1 978 988 0666  
 E-mail: [sales@datapaq.com](mailto:sales@datapaq.com)  
 Web: [www.datapaq.com](http://www.datapaq.com)

**Germany**  
 DATAPAQ GmbH,  
 Valdorfer Straße 100  
 D-32602 Vlotho, Deutschland  
 Tel: +49 5733 9107 0  
 Fax: +49 5733 9107 27  
 E-mail: [sales@datapaq.de](mailto:sales@datapaq.de)  
 Web: [www.datapaq.de](http://www.datapaq.de)



[www.datapaq.com](http://www.datapaq.com)

© 2011 Datapaq (HiTemp Rev B) 1/2011  
 Datapaq, the Datapaq logo and EasyTrack  
 are registered trademarks of Datapaq.  
 Specifications subject to change without notice.