

## Solving electrical problems with thermal imaging

### Application Note

This article describes how to identify problems within the electrical distribution system, both when trouble has already hit and in advance, through routine preventive maintenance.

#### Basic how-tos: Electrical load, safety, and emissivity

Today's thermal imagers are rugged, easy to use, and much more affordable than even just a few years ago. That's making them a realistic solution for everyday electrical maintenance.

To use it, a qualified technician or electrician points the thermal imager at the equipment in question and scans the immediate area, looking for unexpected hot spots. The imager produces a live image of the heat emitted from the equipment. To capture a specific thermal image, squeeze the trigger. When the inspection

is complete, upload the images to a computer for closer analysis, reporting, and future trending.

While the imagers are easy to use, they are most effective in the hands of a qualified technician who understands electrical measurement and the equipment being inspected. The following three points are especially important.

#### Point one: loading

The electrical equipment being inspected must be under at least 40 % of nominal load in order to detect problems with a thermal imager. Maximum load conditions are ideal, if possible.

#### Point two: safety

Electrical measurement safety standards still apply, under NFPA 70E\*. Standing in front of an open, live electrical panel requires personal protective equipment (PPE). Depending upon the situation and the incident energy level (Bolted Fault Current) of the equipment being scanned, this may include:

- Flame resistant clothing
- Leather-over-rubber gloves
- Leather work boots
- Arc flash rated face shield, hard hat and hearing protection or a full flash suit

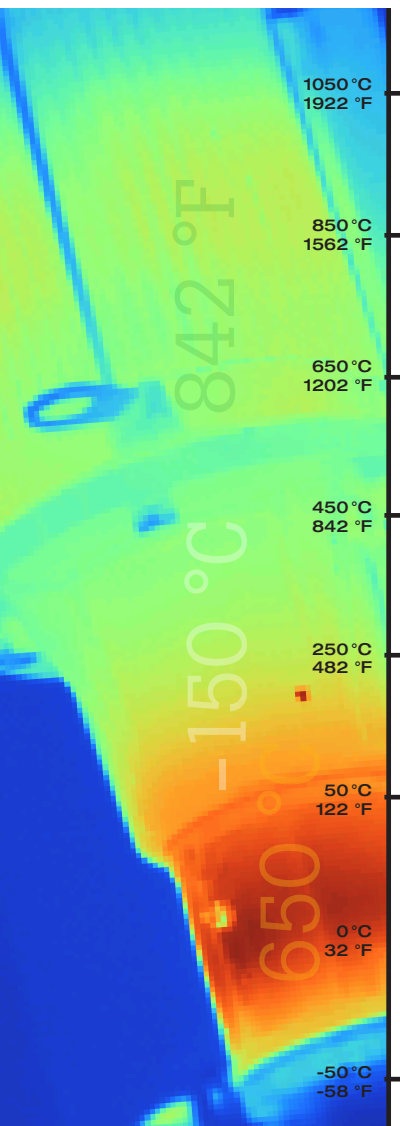
#### Point three: emissivity

Emissivity describes how well an object emits infrared energy, or heat. This affects how well a thermal imager can accurately measure the object's surface temperature. Different materials emit infrared energy in different ways. Every object and material has a specific emissivity that is rated on a scale of 0 to 1.0. For thermal imagers to report accurate temperatures, the higher emissivity, the better.



When scanning a live electrical panel, wear appropriate 70E personal protective equipment for arc flash and stand at least four feet away.

Objects that have high emissivity emit thermal energy well and are not usually very reflective. Materials that have low emissivity are usually fairly reflective and do not emit thermal energy well. This can cause confusion and incorrect analysis of the situation if you are not careful. A thermal imager can only accurately calculate the surface temperature of an object if the emissivity of the material is relatively high, and/or the emissivity level on the imager is set close to the emissivity of the object.



Most painted objects have a high emissivity of about 0.90 to 0.98. Ceramic, rubber, and most electrical tape and conductor insulation have relatively high emissivities as well.

Aluminum bus, however, is very reflective, and so are copper and some kinds of stainless steel.

The good news is that most thermal imaging performed for electrical inspection purposes is a comparative, or qualitative, process. You don't usually need a specific temperature measurement. Instead, look for a spot that is hotter than similar equipment under the same load conditions... spots that you do not expect.

### Troubleshooting electrical systems

If you're chasing breaker problems or load performance issues, here's what to check. Once you've completed your repairs, take another thermal scan. If the repair was successful, the hot spot you first detected should have gone away.

**Note:** Not all electrical hot spots are loose connections. For a correct diagnosis, it's smart to have a qualified electrician either perform the thermal scan or be present while it's done.

### Three-phase imbalance

Capture thermal images of all electrical panels and other high-load connection points such as drives, disconnects, controls, and so on. Wherever you discover higher temperatures, follow that circuit and examine associated branches and loads.

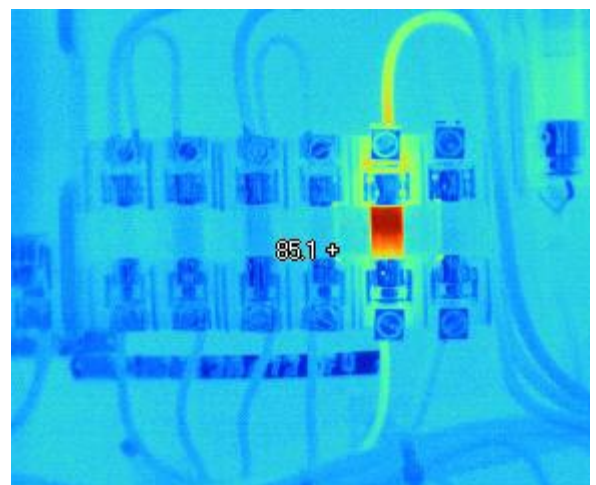
Compare all three phases side-by-side and check for temperature differences. A cooler-than-normal circuit or leg might signal a failed component. More heavily loaded phases will appear warmer. Hot conductors may be undersized or overloaded. However, an unbalanced

load, an overload, a bad connection, and harmonics can all create a similar pattern, so follow up with electrical or power quality measurements to diagnose the problem.

**Note:** Voltage drops across the fuses and switches can also show up as unbalance at the motor and excess heat at the root trouble spot. Before you assume the cause has been found, double-check with both the thermal imager and a multimeter or clamp meter current measurements.

### Connections and wiring

Look for connections that have higher temperatures than other similar connections under similar loads. That could indicate a loose, over tightened, or corroded connection with increased resistance. Connection-related hot spots usually, but not always, appear warmest at the spot of resistance, cooling with distance from that spot. In some cases a cold component is abnormal due to the current being shunted away from the high-resistance connection. You may also find broken or undersized wires or defective insulation. The NETA (InterNational Electrical Testing Association) guidelines say that when the difference in temperature (DT) between similar components under similar loads exceeds 15 °C (~25 °F), immediate repairs should be undertaken.



When evaluating an electrical hot spot, notice whether the heat continues back along the wire toward the load (load related problem) or is isolated to the connection (connection-related problem).

**Fuses**

If a fuse shows up hot on a thermal scan, it may be at or near its current capacity. However, not all problems are hot. A blown fuse, for example, would produce a cooler than normal temperature.

**Tip:** Measure the load at the time of each scan, so that you can properly evaluate your measurements against normal operating conditions.

**Motor control centers (MCC)**

To evaluate an MCC under load, open up each compartment and compare the relative temperatures of key components: bus bars, controllers, starters, contactors, relays, fuses, breakers, disconnects, feeders, and transformers. Incorporate the guidelines above for inspecting connections and fuses and identifying phase imbalance.

**Transformers**

For oil-filled transformers, use a thermal imager to look at high- and low-voltage external bushing connections, cooling tubes, and cooling fans and pumps, as well as the surfaces of critical transformers. (Dry transformers have coil temperatures so much higher than ambient, it's difficult to detect problems with thermal imagery.) Incorporate the guidelines above for connections and imbalances. The cooling tubes should appear warm. If one or more tubes is comparatively cool, oil flow is probably restricted. Keep in mind that like an electric motor, a transformer has a minimum operating temperature that represents the maximum allowable rise in temperature above ambient (typically 40 °C). A 10 °C rise above the nameplate operating temperature will probably reduce the transformer's life by 50 percent.

\*For PPE guidelines, reference NFPA (National Fire Protection Association) Standard 70E Tables 130.7 (c)(9)(a), (c)(10), (c)(11).



**Note:** For a thermal imager to detect an internal transformer problem, the malfunction must generate enough heat to be detectable on the outside. That means that a malfunctioning bushing connection, for example, will be much hotter than the surface temperatures read by the imager.

**Fluke.** *Keeping your world up and running.*®

**Fluke Corporation**

PO Box 9090, Everett, WA 98206 U.S.A.

**Fluke Europe B.V.**

PO Box 1186, 5602 BD Eindhoven, The Netherlands

**For more information call:**

In the U.S.A. (800) 443-5853 or Fax (425) 446-5116  
 In Europe/M-East/Africa +31 (0) 40 2675 200 or Fax +31 (0) 40 2675 222  
 In Canada (800)-36-FLUKE or Fax (905) 890-6866  
 From other countries +1 (425) 446-5500 or Fax +1 (425) 446-5116  
 Web access: <http://www.fluke.com>

©2008 Fluke Corporation. Specifications subject to change without notice. Printed in U.S.A. 7/2008 3359026 A-EN-N Rev A

**Modification of this document is not permitted without written permission from Fluke Corporation.**