



Furnace ID: Furnace 1

Survey Start Date: 24-9-06

Survey Start Time: 08:40:00

Technician: John Doe

FLUKE

10 point survey (9TUS + 1 control)

**Process
Instruments****Survey Details**

Furnace ID	Furnace 1
Furnace Operating Range	770 to 970C
Thermocouple Spool / Batch No.	2458
Thermocouple Correction Factors	10 point survey.cal
Type of Thermocouple	N
Survey Start Date	24-9-06
Survey Start Time	08:40:00
Survey End Date	24-9-06
Survey End Time	15:28:40
Next Survey Due Date	24/12/2006
Testing Company Identification	Datapaq
Technician	John Doe
Logger ID	3214
Logger Calibration Cert. No.	56789
Expiration Date	04-7-07
Logger Correction Factors	logger test correction factors.lcf
Sample Interval	0:10.00 (mm:ss.t)
Working Volume (HxWxD)	1m x 1m x 1.5m
Compliance with (spec.)	AMS2750D

Survey Summary

Set Point (°C)	Survey Minimum (°C)	Survey Maximum (°C)	Tolerance (°C)	Overshoot?	Pass / Fail
770.0	(#8,#10) 770.4	(#1) 778.3	+10.0 -10.0	Yes	
870.0	(#8) 868.2	(#1) 877.4	+10.0 -10.0	No	
970.0	(#8) 968.3	(#1) 977.4	+10.0 -10.0	No	

Temperature Uniformity Survey Result

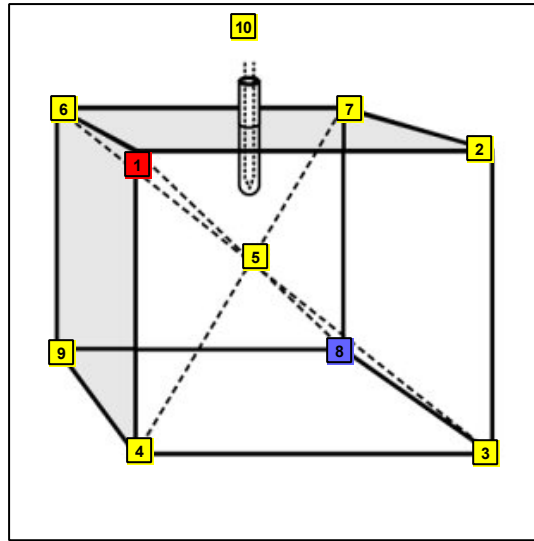
Pass		Fail		See Notes	
Testing Company Signature					
Quality Organization Approval					

Notes

This is an example Survey only.

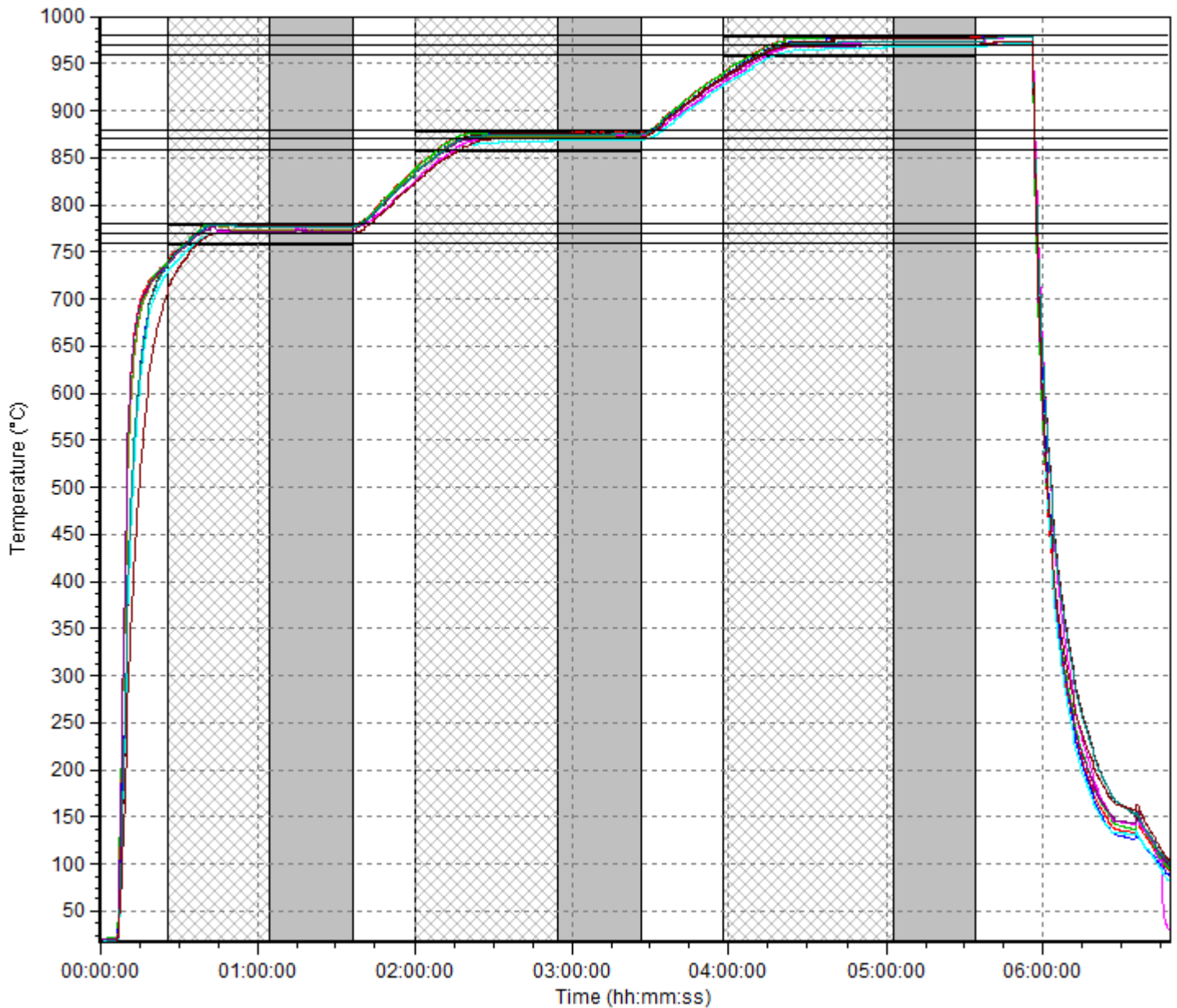


Probe Map



- #1 # 5605 1
- #2 # 5605 2
- #3 # 5605 3
- #4 # 5605 4
- #5 # 5605 5
- #6 # 5605 6
- #7 # 5605 7
- #8 # 5605 8
- #9 # 5605 9
- #10 # 5605 10

Temperature Uniformity Survey





Furnace ID: Furnace 1

Survey Start Date: 24-9-06

Survey Start Time: 08:40:00

Technician: John Doe

Temperature Uniformity Survey

Thermocouple (1-10) and Logger (1-10) Correction Factors applied

Set Point 1 (770.0°C) Tolerance ±10.0°C Survey Time 00:31:44 hh:mm:ss										
	#1 (°C)	#2 (°C)	#3 (°C)	#4 (°C)	#5 (°C)	#6 (°C)	#7 (°C)	#8 (°C)	#9 (°C)	#10 (°C)
Furnace Class	AMS2750D: 4 BAC 5621: 4									
Minimum (°C)	777.9	777.5	777.3	777.5	775.0	773.9	773.2	770.4	776.3	770.4
Maximum (°C)	778.3	777.9	777.7	778.1	775.6	774.3	773.7	770.8	776.9	770.8
Mean (°C)	778.1	777.7	777.5	777.9	775.4	774.1	773.4	770.6	776.7	770.6
Spread (°C)	0.4	0.4	0.4	0.6	0.6	0.4	0.5	0.4	0.6	0.4
Maximum Spread (°C)	●-----7.9-----○									
Deviation from set (°C)	+8.3 +7.9	+7.9 +7.5	+7.7 +7.3	+8.1 +7.5	+5.6 +5.0	+4.3 +3.9	+3.7 +3.2	+0.8 +0.4	+6.9 +6.3	+0.8 +0.4
Max Deviation from set (°C)	+8.3							+0.4		+0.4
Recovery Time (hh:mm:ss)	○-----00:05:10-----●									
Ppk	5.72	7.21	7.47	4.42	8.09	21.54	21.82	30.07	7.73	30.07
Overall Ppk	←-----0.58-----→									

Set Point 2 (870.0°C) Tolerance ±10.0°C Survey Time 00:31:50 hh:mm:ss										
	#1 (°C)	#2 (°C)	#3 (°C)	#4 (°C)	#5 (°C)	#6 (°C)	#7 (°C)	#8 (°C)	#9 (°C)	#10 (°C)
Furnace Class	AMS2750D: 3 BAC 5621: 3									
Minimum (°C)	877.1	876.8	876.7	876.6	874.5	872.2	871.3	868.2	875.1	871.3
Maximum (°C)	877.4	877.1	877.0	877.0	875.3	872.5	871.8	869.2	875.6	871.8
Mean (°C)	877.3	876.9	876.8	876.8	875.0	872.4	871.6	868.8	875.4	871.6
Spread (°C)	0.3	0.3	0.3	0.4	0.8	0.3	0.5	1.0	0.5	0.5
Maximum Spread (°C)	●-----9.2-----○									
Deviation from set (°C)	+7.4 +7.1	+7.1 +6.8	+7.0 +6.7	+7.0 +6.6	+5.3 +4.5	+2.5 +2.2	+1.8 +1.3	-0.8 -1.8	+5.6 +5.1	+1.8 +1.3
Max Deviation from set (°C)	+7.4							-1.8		
Recovery Time (hh:mm:ss)	○-----00:09:00-----●									
Ppk	12.82	15.44	15.10	12.11	7.80	32.20	22.11	10.52	22.55	22.11
Overall Ppk	←-----0.68-----→									

Set Point 3 (970.0°C) Tolerance ±10.0°C Survey Time 00:31:20 hh:mm:ss										
	#1 (°C)	#2 (°C)	#3 (°C)	#4 (°C)	#5 (°C)	#6 (°C)	#7 (°C)	#8 (°C)	#9 (°C)	#10 (°C)
Furnace Class	AMS2750D: 3 BAC 5621: 3									
Minimum (°C)	976.9	976.6	976.6	976.3	974.3	971.1	970.4	968.3	974.5	971.1
Maximum (°C)	977.4	977.2	977.2	977.0	975.3	971.8	971.3	969.4	975.3	971.8
Mean (°C)	977.1	976.8	976.8	976.7	974.8	971.4	970.8	968.8	974.8	971.4
Spread (°C)	0.5	0.6	0.6	0.7	1.0	0.7	0.9	1.1	0.8	0.7
Maximum Spread (°C)	●-----9.1-----○									
Deviation from set (°C)	+7.4 +6.9	+7.2 +6.6	+7.2 +6.6	+7.0 +6.3	+5.3 +4.3	+1.8 +1.1	+1.3 +0.4	-0.6 -1.7	+5.3 +4.5	+1.8 +1.1
Max Deviation from set (°C)	+7.4							-1.7		
Recovery Time (hh:mm:ss)	○-----00:09:10-----●									
Ppk	8.88	9.73	7.54	7.43	8.14	18.61	16.00	10.41	9.60	18.61
Overall Ppk	←-----0.69-----→									



Furnace ID: Furnace 1

Survey Start Date: 24-9-06

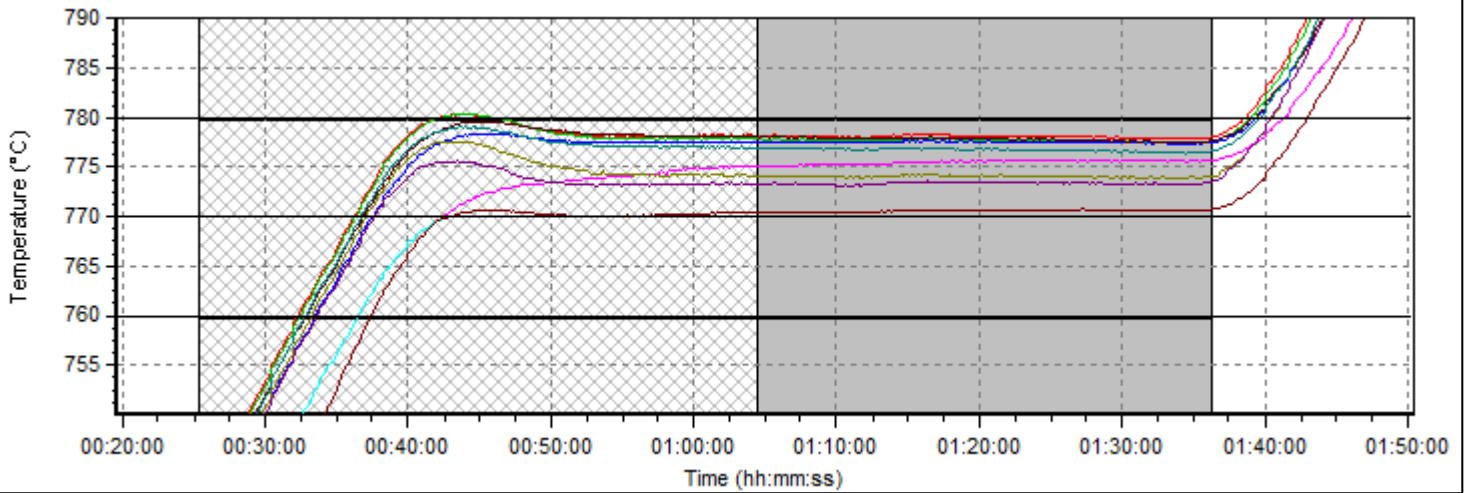
Survey Start Time: 08:40:00

Technician: John Doe

Survey Measurements

Thermocouple (1-10) and Logger (1-10) Correction Factors applied

Set Point 1 (770.0°C) Tolerance ±10.0°C Survey Time 00:31:44 hh:mm:ss



Set Point 1 (770.0°C) Tolerance ±10.0°C Survey Time 00:31:44 hh:mm:ss

Overshoot occurred (Maximum 778.3°C)

Time (hh:mm:ss)	#1 (°C)	#2 (°C)	#3 (°C)	#4 (°C)	#5 (°C)	#6 (°C)	#7 (°C)	#8 (°C)	#9 (°C)	#10 (°C)
00:25:20	740.2	739.7	735.3	737.2	705.7	737.0	736.9	727.4	736.1	705.7
00:25:30	740.6	740.1	736.0	737.8	707.0	737.5	737.3	728.1	736.7	707.0
00:25:40	741.1	740.6	736.6	738.4	708.4	737.9	737.8	728.7	737.3	708.4
00:25:50	741.6	741.0	737.2	738.9	709.6	738.4	738.2	729.3	738.1	709.6
00:26:00	742.0	741.5	737.7	739.5	710.8	738.9	738.7	729.9	738.6	710.8
00:26:10	742.5	742.0	738.3	740.1	712.0	739.4	739.2	730.5	739.2	712.0
00:26:20	742.9	742.4	738.9	740.6	713.1	739.8	739.6	731.1	739.8	713.1
00:26:30	743.4	742.9	739.5	741.2	714.3	740.3	740.0	731.6	740.4	714.3
00:26:40	743.8	743.3	740.0	741.7	715.4	740.7	740.5	732.2	741.0	715.4
00:26:50	744.3	743.8	740.5	742.3	716.4	741.2	741.0	732.7	741.6	716.4
00:27:00	744.7	744.3	741.0	742.8	717.4	741.7	741.5	733.3	742.1	717.4
00:27:10	745.2	744.7	741.6	743.4	718.5	742.3	742.0	733.9	742.7	718.5
00:27:20	745.7	745.3	742.1	743.9	719.5	742.7	742.4	734.4	743.3	719.5
00:27:30	746.2	745.7	742.7	744.5	720.6	743.3	743.0	735.0	743.9	720.6
00:27:40	746.6	746.2	743.2	745.0	721.6	743.8	743.4	735.5	744.4	721.6
00:27:50	747.1	746.7	743.8	745.5	722.6	744.3	743.9	736.2	745.0	722.6
00:28:00	747.7	747.2	744.2	746.0	723.5	744.8	744.4	736.7	745.5	723.5
00:28:10	748.2	747.7	744.8	746.5	724.5	745.3	744.9	737.3	746.1	724.5
00:28:20	748.7	748.2	745.3	747.1	725.4	745.8	745.4	737.8	746.6	725.4
00:28:30	749.1	748.7	745.8	747.6	726.3	746.3	745.9	738.2	747.1	726.3
00:28:40	749.7	749.2	746.3	748.1	727.2	746.8	746.4	738.8	747.7	727.2
00:28:50	750.1	749.7	746.8	748.6	728.1	747.3	746.8	739.3	748.2	728.1
00:29:00	750.6	750.2	747.4	749.1	728.9	747.8	747.3	739.8	748.7	728.9
00:29:10	751.0	750.6	747.8	749.6	729.8	748.3	747.8	740.3	749.3	729.8
00:29:20	751.5	751.0	748.3	750.1	730.6	748.8	748.2	740.8	749.8	730.6
00:29:30	752.0	751.5	748.7	750.6	731.4	749.3	748.7	741.3	750.3	731.4
00:29:40	752.4	752.0	749.3	751.0	732.3	749.8	749.2	741.9	750.8	732.3
00:29:50	752.9	752.5	749.8	751.5	733.0	750.3	749.6	742.4	751.2	733.0
00:30:00	753.4	753.0	750.3	752.0	733.9	750.8	750.2	742.8	751.8	733.9
00:30:10	753.8	753.4	750.7	752.4	734.6	751.2	750.6	743.3	752.3	734.6
00:30:20	754.3	753.9	751.2	753.0	735.4	751.7	751.0	743.8	752.9	735.4
00:30:30	754.8	754.4	751.7	753.4	736.2	752.2	751.5	744.3	753.3	736.2
00:30:40	755.3	754.9	752.2	753.9	737.0	752.8	752.0	744.8	753.9	737.0
00:30:50	755.8	755.4	752.7	754.4	737.7	753.2	752.5	745.3	754.4	737.7
00:31:00	756.2	755.8	753.1	754.9	738.4	753.7	753.0	745.8	754.9	738.4
00:31:10	756.7	756.3	753.6	755.3	739.1	754.2	753.4	746.1	755.3	739.1
00:31:20	757.2	756.8	754.1	755.8	739.8	754.7	753.9	746.6	755.8	739.8
00:31:30	757.7	757.2	754.6	756.3	740.5	755.1	754.4	747.1	756.3	740.5
00:31:40	758.1	757.7	755.0	756.8	741.1	755.6	754.8	747.6	756.8	741.1
00:31:50	758.6	758.2	755.5	757.2	741.8	756.1	755.3	748.0	757.2	741.8
00:32:00	759.1	758.7	755.9	757.7	742.4	756.6	755.7	748.5	757.7	742.4
00:32:10	759.5	759.2	756.5	758.1	743.0	757.1	756.2	749.0	758.2	743.0
00:32:20	760.0	759.6	756.9	758.6	743.7	757.5	756.7	749.5	758.7	743.7
00:32:30	760.5	760.0	757.3	759.0	744.3	758.0	757.1	749.9	759.1	744.3
00:32:40	760.9	760.5	757.7	759.4	744.9	758.4	757.5	750.3	759.6	744.9
00:32:50	761.4	761.0	758.2	759.9	745.5	758.9	757.9	750.7	760.0	745.5
00:33:00	761.7	761.4	758.6	760.3	746.1	759.3	758.3	751.1	760.4	746.1
00:33:10	762.2	761.7	759.0	760.7	746.7	759.7	758.7	751.5	760.8	746.7
00:33:20	762.6	762.3	759.4	761.0	747.3	760.1	759.1	752.0	761.3	747.3
00:33:30	763.0	762.7	759.9	761.6	747.8	760.6	759.5	752.4	761.8	747.8
00:33:40	763.4	763.1	760.3	761.9	748.4	761.0	759.9	752.8	762.2	748.4
00:33:50	763.8	763.5	760.7	762.4	748.9	761.5	760.4	753.2	762.6	748.9
00:34:00	764.3	763.9	761.1	762.8	749.5	761.9	760.8	753.7	763.1	749.5
00:34:10	764.7	764.4	761.6	763.2	750.0	762.3	761.2	754.1	763.4	750.0
00:34:20	765.1	764.8	761.9	763.6	750.6	762.8	761.6	754.5	763.9	750.6
00:34:30	765.5	765.2	762.3	763.9	751.0	763.2	762.0	754.9	764.2	751.0
00:34:40	765.9	765.6	762.8	764.4	751.6	763.5	762.4	755.3	764.7	751.6
00:34:50	766.4	766.0	763.3	764.8	752.1	764.0	762.8	755.7	765.1	752.1
00:35:00	766.8	766.5	763.6	765.2	752.7	764.4	763.2	756.2	765.5	752.7
00:35:10	767.2	766.9	764.1	765.7	753.2	764.9	763.6	756.6	765.9	753.2
00:35:20	767.6	767.3	764.5	766.1	753.7	765.3	764.0	757.0	766.4	753.7
00:35:30	768.0	767.7	764.9	766.5	754.2	765.6	764.4	757.3	766.7	754.2
00:35:40	768.5	768.1	765.4	766.9	754.8	766.2	764.9	757.8	767.1	754.8
00:35:50	768.9	768.6	765.7	767.4	755.3	766.6	765.3	758.2	767.6	755.3



Furnace ID: Furnace 1

Survey Start Date: 24-9-06

Survey Start Time: 08:40:00

Technician: John Doe

Survey Measurements

Thermocouple (1-10) and Logger (1-10) Correction Factors applied

Set Point 1 (770.0°C) Tolerance ±10.0°C Survey Time 00:31:44 hh:mm:ss

Overshoot occurred (Maximum 778.3°C)

Time (hh:mm:ss)	#1 (°C)	#2 (°C)	#3 (°C)	#4 (°C)	#5 (°C)	#6 (°C)	#7 (°C)	#8 (°C)	#9 (°C)	#10 (°C)
00:36:00	769.4	769.0	766.2	767.7	755.8	767.0	765.8	758.6	768.0	755.8
00:36:10	769.8	769.5	766.6	768.2	756.3	767.4	766.2	759.0	768.5	756.3
00:36:20	770.2	769.9	767.1	768.6	756.8	767.9	766.7	759.5	768.9	756.8
00:36:30	770.6	770.4	767.5	769.0	757.3	768.4	767.1	759.9	769.4	757.3
00:36:40	771.1	770.8	767.9	769.4	757.8	768.8	767.5	760.3	769.8	757.8
00:36:50	771.5	771.2	768.3	769.9	758.2	769.2	768.0	760.7	770.3	758.2
00:37:00	772.0	771.7	768.8	770.3	758.7	769.7	768.4	761.1	770.7	758.7
00:37:10	772.4	772.2	769.2	770.7	759.2	770.2	768.8	761.5	771.1	759.2
00:37:20	772.8	772.6	769.5	771.1	759.7	770.6	769.2	761.9	771.5	759.7
00:37:30	773.3	773.0	770.0	771.5	760.2	771.0	769.6	762.3	771.9	760.2
00:37:40	773.7	773.4	770.3	771.9	760.6	771.3	770.0	762.7	772.4	760.6
00:37:50	774.0	773.8	770.8	772.3	761.1	771.8	770.4	763.1	772.7	761.1
00:38:00	774.5	774.2	771.1	772.7	761.6	772.2	770.8	763.5	773.1	761.6
00:38:10	774.8	774.6	771.5	773.0	762.0	772.5	771.1	763.8	773.5	762.0
00:38:20	775.2	774.9	771.8	773.4	762.4	772.9	771.4	764.2	773.9	762.4
00:38:30	775.6	775.4	772.3	773.8	762.8	773.2	771.8	764.6	774.2	762.8
00:38:40	775.9	775.7	772.5	774.0	763.2	773.5	772.1	764.8	774.5	763.2
00:38:50	776.3	776.0	772.9	774.4	763.6	773.9	772.3	765.2	774.9	763.6
00:39:00	776.6	776.3	773.2	774.7	764.1	774.1	772.6	765.5	775.1	764.1
00:39:10	776.8	776.6	773.5	775.0	764.3	774.5	772.8	765.8	775.4	764.3
00:39:20	777.1	776.9	773.8	775.3	764.8	774.8	773.2	766.1	775.7	764.8
00:39:30	777.4	777.2	774.1	775.6	765.1	775.0	773.3	766.4	775.9	765.1
00:39:40	777.7	777.5	774.4	775.9	765.4	775.3	773.5	766.6	776.2	765.4
00:39:50	778.0	777.8	774.8	776.2	765.9	775.6	773.9	767.0	776.6	765.9
00:40:00	778.2	778.0	775.0	776.4	766.2	775.8	774.0	767.2	776.7	766.2
00:40:10	778.3	778.2	775.2	776.6	766.5	775.9	774.2	767.4	776.9	766.5
00:40:20	778.6	778.4	775.5	776.9	766.8	776.2	774.4	767.6	777.2	766.8
00:40:30	778.8	778.6	775.7	777.1	767.1	776.3	774.5	767.8	777.3	767.1
00:40:40	779.0	778.8	775.9	777.3	767.4	776.5	774.7	768.1	777.6	767.4
00:40:50	779.1	779.0	776.2	777.5	767.7	776.6	774.8	768.3	777.7	767.7
00:41:00	779.3	779.2	776.3	777.7	768.0	776.8	774.9	768.5	777.9	768.0
00:41:10	779.4	779.3	776.5	777.9	768.2	776.9	775.1	768.7	778.0	768.2
00:41:20	779.6	779.5	776.7	778.0	768.5	777.1	775.1	768.8	778.1	768.5
00:41:30	779.7	779.6	776.8	778.2	768.7	777.1	775.2	768.9	778.2	768.7
00:41:40	779.8	779.7	776.9	778.3	769.0	777.2	775.3	769.1	778.3	769.0
00:41:50	779.9	779.8	777.1	778.4	769.2	777.3	775.3	769.3	778.5	769.2
00:42:00	780.0	779.9	777.3	778.5	769.4	777.4	775.4	769.4	778.5	769.4
00:42:10	780.1	780.0	777.3	778.6	769.6	777.4	775.5	769.5	778.6	769.6
00:42:20	780.2	780.0	777.5	778.8	769.8	777.4	775.5	769.6	778.7	769.8
00:42:30	780.2	780.2	777.6	778.9	770.0	777.5	775.4	769.7	778.8	769.8
00:42:40	780.3	780.2	777.7	779.0	770.2	777.6	775.5	769.8	778.8	769.8
00:42:50	780.3	780.3	777.8	779.0	770.4	777.6	775.5	769.9	778.9	769.9
00:43:00	780.4	780.3	777.8	779.1	770.6	777.6	775.5	770.1	778.9	770.1
00:43:10	780.4	780.4	778.0	779.2	770.7	777.6	775.5	770.1	779.0	770.1
00:43:20	780.3	780.4	778.0	779.3	770.9	777.6	775.5	770.2	778.9	770.2
00:43:30	780.4	780.4	778.1	779.4	771.1	777.6	775.6	770.3	779.0	770.3
00:43:40	780.5	780.5	778.2	779.4	771.2	777.6	775.5	770.3	779.1	770.3
00:43:50	780.4	780.5	778.2	779.5	771.3	777.6	775.5	770.4	779.0	770.4
00:44:00	780.5	780.5	778.3	779.5	771.5	777.5	775.5	770.4	779.1	770.4
00:44:10	780.4	780.4	778.2	779.5	771.6	777.5	775.5	770.5	779.0	770.5
00:44:20	780.4	780.4	778.3	779.6	771.7	777.5	775.5	770.5	779.0	770.5
00:44:30	780.4	780.4	778.3	779.6	771.9	777.4	775.4	770.6	779.1	770.6
00:44:40	780.4	780.4	778.4	779.6	771.9	777.3	775.4	770.6	779.1	770.6
00:44:50	780.3	780.4	778.4	779.6	772.1	777.3	775.3	770.6	779.0	770.6
00:45:00	780.3	780.3	778.4	779.6	772.1	777.3	775.2	770.6	779.0	770.6
00:45:10	780.3	780.3	778.4	779.6	772.2	777.2	775.2	770.6	778.9	770.6
00:45:20	780.2	780.2	778.4	779.6	772.3	777.0	775.1	770.6	778.9	770.6
00:45:30	780.1	780.2	778.3	779.6	772.4	777.0	775.1	770.6	778.9	770.6
00:45:40	780.1	780.2	778.4	779.6	772.5	777.0	775.0	770.7	778.9	770.7
00:45:50	780.1	780.1	778.4	779.6	772.6	776.9	775.0	770.6	778.8	770.6
00:46:00	780.0	780.1	778.4	779.6	772.6	776.8	774.9	770.7	778.7	770.7
00:46:10	779.9	780.0	778.4	779.5	772.7	776.7	774.7	770.7	778.7	770.7
00:46:20	779.9	779.9	778.4	779.5	772.7	776.6	774.7	770.6	778.7	770.6
00:46:30	779.9	779.9	778.3	779.5	772.8	776.5	774.7	770.6	778.6	770.6
00:46:40	779.8	779.8	778.3	779.5	772.9	776.5	774.7	770.6	778.6	770.6
00:46:50	779.7	779.7	778.3	779.4	772.9	776.4	774.6	770.6	778.5	770.6
00:47:00	779.7	779.7	778.3	779.4	773.0	776.3	774.5	770.6	778.5	770.6
00:47:10	779.6	779.7	778.2	779.4	773.0	776.2	774.4	770.5	778.5	770.5
00:47:20	779.6	779.6	778.3	779.4	773.1	776.2	774.4	770.6	778.4	770.6
00:47:30	779.4	779.5	778.2	779.3	773.1	776.1	774.3	770.5	778.3	770.5
00:47:40	779.4	779.4	778.2	779.3	773.2	776.1	774.2	770.5	778.3	770.5
00:47:50	779.4	779.4	778.2	779.2	773.2	776.0	774.2	770.5	778.2	770.5
00:48:00	779.2	779.3	778.1	779.2	773.3	775.9	774.1	770.5	778.2	770.5
00:48:10	779.2	779.2	778.1	779.2	773.3	775.8	774.0	770.4	778.1	770.4
00:48:20	779.1	779.2	778.0	779.1	773.3	775.7	774.0	770.4	778.1	770.4
00:48:30	779.1	779.1	778.0	779.0	773.3	775.6	773.9	770.4	778.0	770.4
00:48:40	779.0	779.0	777.9	779.0	773.3	775.5	773.9	770.4	778.0	770.4
00:48:50	779.0	778.9	777.9	779.0	773.4	775.4	773.8	770.3	777.9	770.3
00:49:00	778.9	778.8	777.9	778.9	773.4	775.4	773.8	770.3	777.9	770.3
00:49:10	778.9	778.8	777.9	778.9	773.4	775.4	773.7	770.3	777.8	770.3
00:49:20	778.8	778.8	777.9	778.9	773.4	775.3	773.7	770.3	777.8	770.3
00:49:30	778.8	778.7	777.9	778.8	773.4	775.2	773.7	770.3	777.7	770.3
00:49:40	778.7	778.7	777.8	778.8	773.5	775.2	773.6	770.2	777.7	770.2
00:49:50	778.7	778.6	777.8	778.8	773.5	775.1	773.5	770.2	777.6	770.2
00:50:00	778.6	778.6	777.8	778.8	773.5	775.1	773.6	770.2	777.6	770.2
00:50:10	778.6	778.5	777.7	778.7	773.5	775.0	773.5	770.2	777.5	770.2
00:50:20	778.5	778.4	777.7	778.7	773.6	774.9	773.5	770.1	777.5	770.1
00:50:30	778.6	778.4	777.7	778.7	773.6	774.9	773.5	770.2	777.5	770.2
00:50:40	778.5	778.4	777.7	778.7	773.6	774.8	773.5	770.2	777.5	770.2
00:50:50	778.5	778.4	777.7	778.6	773.6	774.8	773.5	770.2	777.5	770.2



Furnace ID: Furnace 1

Survey Start Date: 24-9-06

Survey Start Time: 08:40:00

Technician: John Doe

Survey Measurements

Thermocouple (1-10) and Logger (1-10) Correction Factors applied

Set Point 1 (770.0°C) Tolerance ±10.0°C Survey Time 00:31:44 hh:mm:ss

Overshoot occurred (Maximum 778.3°C)

Time (hh:mm:ss)	#1 (°C)	#2 (°C)	#3 (°C)	#4 (°C)	#5 (°C)	#6 (°C)	#7 (°C)	#8 (°C)	#9 (°C)	#10 (°C)
00:51:00	778.5	778.4	777.7	778.7	773.7	774.8	773.4	770.2	777.4	770.2
00:51:10	778.5	778.3	777.6	778.6	773.7	774.7	773.4	770.1	777.3	770.1
00:51:20	778.5	778.3	777.7	778.6	773.7	774.7	773.3	770.1	777.3	770.1
00:51:30	778.4	778.3	777.6	778.5	773.7	774.7	773.3	770.1	777.3	770.1
00:51:40	778.4	778.2	777.6	778.5	773.8	774.6	773.3	770.0	777.2	770.0
00:51:50	778.4	778.2	777.6	778.5	773.8	774.6	773.3	770.1	777.3	770.1
00:52:00	778.4	778.2	777.6	778.5	773.8	774.6	773.3	770.1	777.3	770.1
00:52:10	778.3	778.1	777.6	778.4	773.8	774.5	773.3	770.0	777.2	770.0
00:52:20	778.3	778.1	777.6	778.4	773.9	774.6	773.3	770.1	777.2	770.1
00:52:30	778.3	778.1	777.5	778.4	773.9	774.5	773.3	770.1	777.2	770.1
00:52:40	778.3	778.0	777.5	778.4	773.9	774.5	773.3	770.1	777.2	770.1
00:52:50	778.2	778.1	777.5	778.4	773.9	774.4	773.3	770.1	777.2	770.1
00:53:00	778.2	778.0	777.5	778.3	773.9	774.4	773.3	770.1	777.1	770.1
00:53:10	778.1	778.0	777.5	778.3	773.9	774.4	773.2	770.0	777.0	770.0
00:53:20	778.2	778.0	777.5	778.4	773.9	774.4	773.2	770.1	777.1	770.1
00:53:30	778.2	778.0	777.5	778.3	774.0	774.4	773.3	770.0	777.0	770.0
00:53:40	778.2	778.0	777.5	778.4	774.0	774.5	773.3	770.1	777.1	770.1
00:53:50	778.3	778.0	777.6	778.4	774.0	774.4	773.3	770.1	777.1	770.1
00:54:00	778.2	778.0	777.5	778.3	774.1	774.4	773.3	770.1	777.1	770.1
00:54:10	778.3	778.0	777.6	778.3	774.1	774.4	773.4	770.1	777.1	770.1
00:54:20	778.3	778.0	777.5	778.3	774.1	774.3	773.3	770.1	777.1	770.1
00:54:30	778.2	777.9	777.6	778.3	774.1	774.4	773.3	770.1	777.1	770.1
00:54:40	778.2	778.0	777.5	778.3	774.1	774.4	773.3	770.1	777.1	770.1
00:54:50	778.2	777.9	777.5	778.3	774.1	774.3	773.3	770.1	777.0	770.1
00:55:00	778.2	777.9	777.5	778.3	774.1	774.3	773.2	770.1	777.0	770.1
00:55:10	778.2	777.9	777.5	778.3	774.2	774.4	773.3	770.1	777.1	770.1
00:55:20	778.3	778.0	777.5	778.3	774.2	774.3	773.3	770.2	777.1	770.2
00:55:30	778.2	777.9	777.5	778.3	774.2	774.3	773.3	770.1	777.0	770.1
00:55:40	778.2	777.9	777.5	778.3	774.2	774.2	773.3	770.1	777.0	770.1
00:55:50	778.2	777.9	777.5	778.2	774.2	774.3	773.3	770.1	777.0	770.1
00:56:00	778.2	778.0	777.5	778.3	774.3	774.3	773.3	770.1	777.0	770.1
00:56:10	778.2	778.0	777.5	778.3	774.4	774.4	773.4	770.1	777.1	770.1
00:56:20	778.2	777.9	777.5	778.3	774.3	774.3	773.3	770.1	777.1	770.1
00:56:30	778.2	777.9	777.5	778.3	774.3	774.3	773.3	770.2	777.0	770.2
00:56:40	778.2	777.9	777.5	778.2	774.3	774.3	773.3	770.1	777.0	770.1
00:56:50	778.2	777.9	777.5	778.2	774.4	774.2	773.2	770.1	777.0	770.1
00:57:00	778.2	777.9	777.5	778.2	774.4	774.3	773.3	770.2	777.0	770.2
00:57:10	778.2	777.9	777.5	778.2	774.4	774.3	773.3	770.1	777.0	770.1
00:57:20	778.2	777.8	777.5	778.2	774.4	774.2	773.3	770.2	777.0	770.2
00:57:30	778.2	777.8	777.5	778.2	774.4	774.3	773.3	770.2	777.0	770.2
00:57:40	778.1	777.9	777.5	778.2	774.4	774.2	773.3	770.2	776.9	770.2
00:57:50	778.2	777.9	777.5	778.1	774.5	774.2	773.3	770.2	776.9	770.2
00:58:00	778.1	777.8	777.5	778.1	774.4	774.2	773.3	770.2	777.0	770.2
00:58:10	778.2	777.9	777.6	778.2	774.4	774.2	773.3	770.2	777.0	770.2
00:58:20	778.2	777.9	777.5	778.2	774.5	774.2	773.3	770.2	776.9	770.2
00:58:30	778.2	777.9	777.5	778.2	774.5	774.3	773.4	770.2	777.0	770.2
00:58:40	778.2	777.9	777.5	778.2	774.5	774.3	773.4	770.2	777.0	770.2
00:58:50	778.2	777.8	777.5	778.1	774.5	774.2	773.3	770.2	777.0	770.2
00:59:00	778.2	777.9	777.6	778.2	774.6	774.3	773.4	770.2	777.0	770.2
00:59:10	778.2	777.9	777.6	778.2	774.6	774.3	773.4	770.3	777.0	770.3
00:59:20	778.2	777.9	777.6	778.2	774.7	774.3	773.4	770.3	777.0	770.3
00:59:30	778.2	777.9	777.5	778.2	774.6	774.3	773.4	770.2	776.9	770.2
00:59:40	778.2	777.9	777.6	778.2	774.7	774.3	773.4	770.3	777.0	770.3
00:59:50	778.2	777.9	777.6	778.2	774.7	774.3	773.4	770.3	777.0	770.3
01:00:00	778.2	777.9	777.6	778.2	774.7	774.3	773.4	770.3	777.0	770.3
01:00:10	778.2	777.9	777.6	778.2	774.6	774.3	773.4	770.3	777.0	770.3
01:00:20	778.3	777.9	777.6	778.2	774.7	774.3	773.4	770.3	777.0	770.3
01:00:30	778.2	777.8	777.6	778.1	774.7	774.2	773.3	770.3	776.9	770.3
01:00:40	778.2	777.8	777.6	778.1	774.7	774.2	773.3	770.3	777.0	770.3
01:00:50	778.3	777.9	777.6	778.2	774.7	774.3	773.4	770.3	776.9	770.3
01:01:00	778.2	777.9	777.6	778.2	774.7	774.2	773.4	770.3	777.0	770.3
01:01:10	778.2	777.9	777.6	778.1	774.7	774.2	773.4	770.3	776.9	770.3
01:01:20	778.3	777.9	777.6	778.2	774.8	774.4	773.5	770.4	777.0	770.4
01:01:30	778.2	777.9	777.6	778.2	774.8	774.3	773.4	770.3	776.9	770.3
01:01:40	778.3	777.9	777.6	778.2	774.8	774.3	773.4	770.4	777.0	770.4
01:01:50	778.3	777.9	777.6	778.2	774.9	774.3	773.4	770.4	776.9	770.4
01:02:00	778.3	777.9	777.6	778.2	774.8	774.3	773.4	770.4	777.0	770.4
01:02:10	778.3	777.9	777.6	778.2	774.9	774.2	773.4	770.4	777.0	770.4
01:02:20	778.2	777.9	777.6	778.2	774.9	774.2	773.5	770.4	776.9	770.4
01:02:30	778.2	777.9	777.6	778.1	774.8	774.2	773.4	770.4	777.0	770.4
01:02:40	778.3	777.8	777.6	778.2	774.9	774.2	773.5	770.4	776.9	770.4
01:02:50	778.2	777.9	777.6	778.1	774.9	774.2	773.4	770.4	776.9	770.4
01:03:00	778.2	777.9	777.6	778.1	774.9	774.3	773.4	770.4	776.9	770.4
01:03:10	778.2	777.9	777.6	778.1	774.9	774.2	773.4	770.4	776.9	770.4
01:03:20	778.2	777.9	777.6	778.2	774.9	774.3	773.5	770.4	777.0	770.4
01:03:30	778.3	777.9	777.6	778.2	774.9	774.3	773.4	770.4	776.9	770.4
01:03:40	778.2	777.9	777.6	778.1	775.0	774.3	773.4	770.4	776.9	770.4
01:03:50	778.3	777.9	777.6	778.1	775.0	774.2	773.4	770.4	776.9	770.4
01:04:00	778.3	777.9	777.6	778.1	775.0	774.2	773.4	770.5	776.9	770.5
01:04:10	778.2	777.9	777.6	778.1	774.9	774.2	773.4	770.4	776.9	770.4
01:04:20	778.2	777.9	777.6	778.1	775.0	774.2	773.4	770.4	776.9	770.4
01:04:30	778.2	777.9	777.6	778.1	775.0	774.2	773.4	770.4	776.9	770.4
01:04:40	778.2	777.9	777.6	778.0	775.0	774.2	773.4	770.5	776.9	770.5
01:04:50	778.2	777.8	777.6	778.1	775.0	774.2	773.4	770.5	776.9	770.5
01:05:00	778.2	777.8	777.6	778.1	775.0	774.2	773.4	770.4	776.9	770.4
01:05:10	778.2	777.8	777.6	778.1	775.0	774.2	773.4	770.4	776.9	770.4
01:05:20	778.2	777.8	777.6	778.0	775.0	774.1	773.4	770.4	776.8	770.4
01:05:30	778.2	777.8	777.6	778.1	775.1	774.2	773.4	770.4	776.9	770.4
01:05:40	778.3	777.9	777.6	778.1	775.1	774.2	773.5	770.5	776.9	770.5
01:05:50	778.2	777.9	777.6	778.1	775.1	774.2	773.4	770.5	776.9	770.5



Furnace ID: Furnace 1

Survey Start Date: 24-9-06

Survey Start Time: 08:40:00

Technician: John Doe

Survey Measurements

Thermocouple (1-10) and Logger (1-10) Correction Factors applied

Set Point 1 (770.0°C) Tolerance ±10.0°C Survey Time 00:31:44 hh:mm:ss

Overshoot occurred (Maximum 778.3°C)

Time (hh:mm:ss)	#1 (°C)	#2 (°C)	#3 (°C)	#4 (°C)	#5 (°C)	#6 (°C)	#7 (°C)	#8 (°C)	#9 (°C)	#10 (°C)
01:06:00	778.2	777.9	777.6	778.1	775.1	774.2	773.4	770.4	776.8	770.4
01:06:10	778.2	777.8	777.6	778.1	775.1	774.2	773.4	770.5	776.8	770.5
01:06:20	778.2	777.8	777.6	778.1	775.1	774.2	773.4	770.4	776.8	770.4
01:06:30	778.2	777.8	777.6	778.0	775.1	774.2	773.4	770.5	776.9	770.5
01:06:40	778.2	777.8	777.6	778.0	775.1	774.1	773.4	770.4	776.8	770.4
01:06:50	778.2	777.8	777.6	778.1	775.1	774.2	773.4	770.5	776.9	770.5
01:07:00	778.2	777.8	777.6	778.0	775.1	774.2	773.4	770.5	776.8	770.5
01:07:10	778.2	777.8	777.6	778.0	775.1	774.2	773.5	770.4	776.8	770.4
01:07:20	778.2	777.8	777.6	778.0	775.1	774.2	773.4	770.4	776.8	770.4
01:07:30	778.2	777.8	777.6	778.1	775.2	774.2	773.4	770.5	776.8	770.5
01:07:40	778.2	777.9	777.6	778.1	775.1	774.2	773.4	770.5	776.8	770.5
01:07:50	778.2	777.8	777.6	778.1	775.2	774.2	773.4	770.5	776.9	770.5
01:08:00	778.2	777.8	777.6	778.0	775.2	774.2	773.4	770.5	776.9	770.5
01:08:10	778.2	777.8	777.6	778.0	775.2	774.2	773.4	770.5	776.9	770.5
01:08:20	778.1	777.8	777.6	778.0	775.1	774.1	773.3	770.5	776.8	770.5
01:08:30	778.1	777.8	777.6	778.1	775.2	774.1	773.4	770.5	776.8	770.5
01:08:40	778.2	777.7	777.6	778.0	775.2	774.1	773.3	770.4	776.8	770.4
01:08:50	778.1	777.8	777.5	778.0	775.2	774.1	773.3	770.5	776.8	770.5
01:09:00	778.2	777.8	777.5	778.0	775.2	774.1	773.3	770.4	776.8	770.4
01:09:10	778.1	777.8	777.6	778.0	775.2	774.1	773.3	770.5	776.7	770.5
01:09:20	778.1	777.7	777.6	777.9	775.2	774.1	773.3	770.5	776.8	770.5
01:09:30	778.1	777.7	777.6	778.0	775.2	774.1	773.3	770.5	776.8	770.5
01:09:40	778.1	777.7	777.5	778.0	775.2	774.1	773.3	770.5	776.8	770.5
01:09:50	778.1	777.7	777.5	778.0	775.2	774.1	773.3	770.4	776.8	770.4
01:10:00	778.0	777.7	777.5	778.0	775.2	774.1	773.2	770.5	776.8	770.5
01:10:10	778.1	777.7	777.5	778.0	775.2	774.1	773.2	770.4	776.8	770.4
01:10:20	778.0	777.7	777.6	778.0	775.2	774.1	773.2	770.4	776.8	770.4
01:10:30	778.1	777.7	777.5	777.9	775.2	774.1	773.2	770.4	776.8	770.4
01:10:40	778.0	777.7	777.5	777.9	775.2	774.0	773.3	770.4	776.7	770.4
01:10:50	778.1	777.7	777.5	777.9	775.2	774.0	773.2	770.4	776.8	770.4
01:11:00	778.0	777.8	777.5	777.9	775.2	774.1	773.2	770.5	776.7	770.5
01:11:10	778.0	777.7	777.5	777.9	775.2	774.0	773.2	770.4	776.7	770.4
01:11:20	778.1	777.7	777.5	778.0	775.2	774.1	773.3	770.5	776.7	770.5
01:11:30	778.1	777.7	777.6	778.0	775.3	774.1	773.3	770.5	776.7	770.5
01:11:40	778.0	777.7	777.5	777.9	775.2	774.0	773.2	770.4	776.7	770.4
01:11:50	778.0	777.7	777.5	777.9	775.3	774.0	773.2	770.5	776.7	770.5
01:12:00	778.0	777.7	777.5	777.9	775.3	774.0	773.3	770.5	776.7	770.5
01:12:10	778.0	777.7	777.5	777.9	775.3	774.1	773.3	770.5	776.8	770.5
01:12:20	778.0	777.7	777.5	777.9	775.3	774.1	773.3	770.5	776.7	770.5
01:12:30	778.1	777.8	777.5	777.9	775.3	774.0	773.3	770.5	776.7	770.5
01:12:40	778.1	777.7	777.5	777.9	775.3	774.1	773.3	770.5	776.7	770.5
01:12:50	778.1	777.7	777.5	777.9	775.3	774.1	773.3	770.5	776.7	770.5
01:13:00	778.1	777.7	777.6	777.9	775.3	774.1	773.4	770.5	776.8	770.5
01:13:10	778.1	777.8	777.6	778.0	775.3	774.1	773.4	770.6	776.8	770.6
01:13:20	778.1	777.8	777.6	778.0	775.3	774.2	773.4	770.5	776.8	770.5
01:13:30	778.1	777.8	777.5	778.0	775.3	774.1	773.4	770.5	776.8	770.5
01:13:40	778.2	777.8	777.6	778.0	775.3	774.2	773.5	770.6	776.8	770.6
01:13:50	778.2	777.8	777.6	778.0	775.3	774.2	773.5	770.5	776.8	770.5
01:14:00	778.3	777.8	777.6	778.0	775.4	774.2	773.5	770.6	776.8	770.6
01:14:10	778.2	777.8	777.6	778.0	775.4	774.2	773.5	770.6	776.8	770.6
01:14:20	778.2	777.7	777.6	778.0	775.4	774.2	773.5	770.6	776.8	770.6
01:14:30	778.2	777.8	777.6	778.0	775.4	774.3	773.5	770.6	776.8	770.6
01:14:40	778.3	777.9	777.7	778.0	775.4	774.2	773.6	770.7	776.8	770.7
01:14:50	778.3	777.9	777.6	778.0	775.4	774.3	773.6	770.6	776.8	770.6
01:15:00	778.3	777.9	777.7	778.0	775.4	774.3	773.6	770.7	776.9	770.7
01:15:10	778.3	777.8	777.6	778.0	775.5	774.2	773.6	770.7	776.8	770.7
01:15:20	778.2	777.8	777.7	778.0	775.4	774.3	773.6	770.6	776.8	770.6
01:15:30	778.3	777.8	777.6	778.0	775.4	774.2	773.6	770.6	776.8	770.6
01:15:40	778.3	777.9	777.7	778.0	775.5	774.3	773.6	770.7	776.8	770.7
01:15:50	778.3	777.9	777.6	778.0	775.4	774.3	773.6	770.7	776.8	770.7
01:16:00	778.3	777.9	777.6	778.0	775.4	774.2	773.6	770.7	776.7	770.7
01:16:10	778.3	777.9	777.7	778.0	775.5	774.3	773.6	770.7	776.9	770.7
01:16:20	778.3	777.9	777.7	778.0	775.5	774.3	773.7	770.7	776.8	770.7
01:16:30	778.3	777.9	777.7	778.0	775.5	774.3	773.6	770.7	776.8	770.7
01:16:40	778.3	777.9	777.7	778.1	775.5	774.3	773.6	770.7	776.8	770.7
01:16:50	778.3	777.9	777.7	777.9	775.5	774.3	773.6	770.7	776.8	770.7
01:17:00	778.3	777.8	777.6	778.0	775.4	774.3	773.5	770.7	776.8	770.7
01:17:10	778.3	777.9	777.6	777.9	775.5	774.2	773.6	770.7	776.8	770.7
01:17:20	778.3	777.9	777.7	778.0	775.6	774.2	773.6	770.7	776.8	770.7
01:17:30	778.3	777.9	777.7	778.0	775.5	774.2	773.6	770.7	776.8	770.7
01:17:40	778.3	777.8	777.6	778.0	775.5	774.2	773.5	770.7	776.8	770.7
01:17:50	778.2	777.9	777.6	778.0	775.5	774.2	773.5	770.7	776.8	770.7
01:18:00	778.3	777.9	777.7	778.0	775.5	774.3	773.6	770.7	776.8	770.7
01:18:10	778.2	777.9	777.6	778.0	775.6	774.2	773.6	770.7	776.8	770.7
01:18:20	778.2	777.8	777.6	777.9	775.4	774.2	773.5	770.7	776.7	770.7
01:18:30	778.2	777.8	777.6	777.9	775.5	774.2	773.5	770.7	776.8	770.7
01:18:40	778.2	777.8	777.7	778.0	775.6	774.2	773.6	770.7	776.7	770.7
01:18:50	778.2	777.8	777.6	777.9	775.5	774.2	773.5	770.7	776.7	770.7
01:19:00	778.2	777.8	777.6	777.9	775.5	774.2	773.5	770.7	776.7	770.7
01:19:10	778.2	777.8	777.6	778.0	775.5	774.2	773.5	770.7	776.7	770.7
01:19:20	778.2	777.8	777.7	778.0	775.5	774.2	773.5	770.7	776.7	770.7
01:19:30	778.2	777.8	777.7	777.9	775.6	774.2	773.5	770.7	776.7	770.7
01:19:40	778.2	777.8	777.6	777.9	775.6	774.2	773.5	770.7	776.7	770.7
01:19:50	778.2	777.8	777.6	777.9	775.5	774.2	773.5	770.7	776.8	770.7
01:20:00	778.2	777.8	777.6	777.9	775.6	774.2	773.5	770.7	776.8	770.7
01:20:10	778.2	777.8	777.6	777.9	775.6	774.3	773.5	770.7	776.8	770.7
01:20:20	778.1	777.8	777.6	777.9	775.5	774.2	773.5	770.6	776.7	770.6
01:20:30	778.2	777.8	777.6	777.9	775.5	774.2	773.5	770.6	776.8	770.6
01:20:40	778.2	777.9	777.7	777.9	775.6	774.2	773.6	770.7	776.8	770.7
01:20:50	778.2	777.8	777.6	777.9	775.6	774.2	773.5	770.7	776.7	770.7



Furnace ID: Furnace 1

Survey Start Date: 24-9-06

Survey Start Time: 08:40:00

Technician: John Doe

Survey Measurements

Thermocouple (1-10) and Logger (1-10) Correction Factors applied

Set Point 1 (770.0°C) Tolerance ±10.0°C Survey Time 00:31:44 hh:mm:ss

Overshoot occurred (Maximum 778.3°C)

Time (hh:mm:ss)	#1 (°C)	#2 (°C)	#3 (°C)	#4 (°C)	#5 (°C)	#6 (°C)	#7 (°C)	#8 (°C)	#9 (°C)	#10 (°C)
01:21:00	778.2	777.8	777.6	777.9	775.6	774.2	773.5	770.7	776.8	770.7
01:21:10	778.2	777.8	777.6	777.9	775.6	774.2	773.5	770.7	776.8	770.7
01:21:20	778.2	777.8	777.6	777.9	775.6	774.2	773.5	770.7	776.8	770.7
01:21:30	778.2	777.8	777.6	777.9	775.6	774.3	773.5	770.7	776.7	770.7
01:21:40	778.2	777.8	777.6	777.9	775.5	774.2	773.5	770.7	776.7	770.7
01:21:50	778.2	777.8	777.6	777.9	775.6	774.2	773.5	770.7	776.7	770.7
01:22:00	778.2	777.8	777.6	777.9	775.6	774.2	773.5	770.7	776.8	770.7
01:22:10	778.1	777.8	777.6	777.8	775.6	774.2	773.5	770.7	776.7	770.7
01:22:20	778.2	777.8	777.5	777.8	775.6	774.2	773.5	770.6	776.7	770.6
01:22:30	778.2	777.8	777.6	777.8	775.6	774.2	773.5	770.7	776.7	770.7
01:22:40	778.2	777.8	777.5	777.9	775.6	774.1	773.5	770.7	776.7	770.7
01:22:50	778.2	777.8	777.5	777.9	775.6	774.1	773.5	770.7	776.7	770.7
01:23:00	778.2	777.8	777.5	777.8	775.6	774.2	773.5	770.7	776.7	770.7
01:23:10	778.1	777.7	777.6	777.8	775.6	774.2	773.5	770.7	776.7	770.7
01:23:20	778.1	777.7	777.6	777.8	775.6	774.1	773.5	770.7	776.6	770.7
01:23:30	778.1	777.8	777.6	777.9	775.6	774.2	773.5	770.7	776.6	770.7
01:23:40	778.2	777.8	777.6	777.9	775.6	774.1	773.5	770.7	776.6	770.7
01:23:50	778.2	777.8	777.6	777.8	775.6	774.2	773.5	770.7	776.6	770.7
01:24:00	778.1	777.8	777.6	777.9	775.6	774.2	773.4	770.7	776.6	770.7
01:24:10	778.2	777.8	777.6	777.9	775.6	774.2	773.5	770.7	776.6	770.7
01:24:20	778.2	777.8	777.5	777.8	775.6	774.1	773.5	770.7	776.6	770.7
01:24:30	778.1	777.7	777.6	777.9	775.6	774.2	773.5	770.7	776.6	770.7
01:24:40	778.1	777.8	777.6	777.9	775.6	774.1	773.5	770.7	776.6	770.7
01:24:50	778.2	777.8	777.6	777.8	775.6	774.1	773.6	770.7	776.6	770.7
01:25:00	778.1	777.7	777.6	777.8	775.6	774.2	773.5	770.7	776.6	770.7
01:25:10	778.1	777.8	777.6	777.9	775.6	774.1	773.5	770.7	776.6	770.7
01:25:20	778.1	777.7	777.6	777.8	775.6	774.1	773.5	770.7	776.6	770.7
01:25:30	778.1	777.7	777.5	777.8	775.6	774.1	773.5	770.7	776.6	770.7
01:25:40	778.1	777.8	777.5	777.8	775.6	774.1	773.5	770.6	776.6	770.6
01:25:50	778.2	777.7	777.5	777.8	775.6	774.1	773.4	770.7	776.6	770.7
01:26:00	778.1	777.7	777.6	777.8	775.6	774.2	773.5	770.7	776.7	770.7
01:26:10	778.1	777.7	777.5	777.7	775.6	774.1	773.5	770.7	776.6	770.7
01:26:20	778.1	777.7	777.5	777.8	775.6	774.1	773.4	770.7	776.6	770.7
01:26:30	778.1	777.7	777.5	777.8	775.6	774.1	773.5	770.7	776.6	770.7
01:26:40	778.1	777.7	777.5	777.7	775.6	774.1	773.5	770.7	776.6	770.7
01:26:50	778.1	777.7	777.5	777.7	775.5	774.1	773.5	770.7	776.6	770.7
01:27:00	778.1	777.7	777.5	777.7	775.6	774.1	773.5	770.7	776.6	770.7
01:27:10	778.1	777.8	777.5	777.8	775.6	774.1	773.5	770.8	776.6	770.8
01:27:20	778.1	777.7	777.5	777.8	775.6	774.1	773.5	770.7	776.6	770.7
01:27:30	778.1	777.7	777.5	777.8	775.6	774.1	773.5	770.7	776.6	770.7
01:27:40	778.1	777.7	777.5	777.7	775.5	774.1	773.5	770.7	776.6	770.7
01:27:50	778.1	777.7	777.5	777.7	775.6	774.1	773.4	770.7	776.6	770.7
01:28:00	778.0	777.7	777.5	777.7	775.6	774.0	773.5	770.6	776.6	770.6
01:28:10	778.1	777.7	777.5	777.7	775.6	774.0	773.4	770.6	776.5	770.6
01:28:20	778.1	777.7	777.5	777.8	775.6	774.1	773.5	770.7	776.6	770.7
01:28:30	778.1	777.7	777.6	777.7	775.6	774.1	773.5	770.7	776.6	770.7
01:28:40	778.1	777.7	777.5	777.8	775.6	774.1	773.4	770.7	776.6	770.7
01:28:50	778.1	777.7	777.5	777.7	775.6	774.1	773.4	770.7	776.6	770.7
01:29:00	778.0	777.6	777.4	777.7	775.6	774.1	773.4	770.7	776.6	770.7
01:29:10	778.0	777.6	777.4	777.7	775.6	774.0	773.4	770.6	776.6	770.6
01:29:20	778.0	777.6	777.4	777.6	775.5	774.0	773.4	770.6	776.5	770.6
01:29:30	778.0	777.7	777.4	777.7	775.6	774.0	773.4	770.7	776.6	770.7
01:29:40	778.1	777.6	777.5	777.7	775.6	774.1	773.4	770.7	776.5	770.7
01:29:50	778.0	777.6	777.4	777.7	775.5	774.0	773.3	770.6	776.5	770.6
01:30:00	778.0	777.6	777.4	777.7	775.6	774.0	773.4	770.6	776.5	770.6
01:30:10	778.0	777.7	777.4	777.6	775.6	774.1	773.4	770.6	776.6	770.6
01:30:20	778.0	777.6	777.4	777.6	775.6	774.0	773.4	770.6	776.6	770.6
01:30:30	778.0	777.6	777.4	777.6	775.6	774.0	773.3	770.6	776.5	770.6
01:30:40	778.0	777.6	777.4	777.7	775.6	774.1	773.4	770.6	776.5	770.6
01:30:50	778.0	777.6	777.4	777.7	775.6	774.1	773.4	770.6	776.5	770.6
01:31:00	778.0	777.6	777.4	777.7	775.6	774.0	773.5	770.7	776.6	770.7
01:31:10	778.0	777.6	777.4	777.6	775.6	774.0	773.4	770.6	776.5	770.6
01:31:20	778.0	777.6	777.4	777.6	775.6	774.0	773.4	770.6	776.5	770.6
01:31:30	778.0	777.6	777.4	777.7	775.6	774.0	773.4	770.6	776.5	770.6
01:31:40	778.0	777.6	777.3	777.7	775.6	774.0	773.5	770.7	776.5	770.7
01:31:50	778.0	777.6	777.4	777.7	775.6	774.0	773.4	770.6	776.5	770.6
01:32:00	778.0	777.6	777.3	777.6	775.6	774.1	773.4	770.7	776.5	770.7
01:32:10	778.0	777.6	777.3	777.6	775.6	774.0	773.4	770.6	776.5	770.6
01:32:20	778.0	777.6	777.4	777.6	775.6	774.0	773.5	770.6	776.5	770.6
01:32:30	778.0	777.6	777.4	777.6	775.6	774.0	773.4	770.6	776.5	770.6
01:32:40	778.0	777.6	777.4	777.6	775.6	774.0	773.4	770.6	776.5	770.6
01:32:50	778.0	777.6	777.4	777.6	775.6	774.1	773.4	770.6	776.5	770.6
01:33:00	778.0	777.6	777.4	777.6	775.6	774.0	773.4	770.7	776.5	770.7
01:33:10	777.9	777.6	777.3	777.6	775.5	774.0	773.4	770.7	776.4	770.7
01:33:20	777.9	777.5	777.3	777.6	775.6	774.0	773.4	770.6	776.4	770.6
01:33:30	777.9	777.5	777.3	777.6	775.6	774.0	773.4	770.6	776.4	770.6
01:33:40	777.9	777.5	777.3	777.6	775.6	774.0	773.3	770.6	776.4	770.6
01:33:50	777.9	777.6	777.3	777.6	775.6	774.0	773.4	770.6	776.4	770.6
01:34:00	777.9	777.6	777.3	777.6	775.6	774.0	773.4	770.6	776.5	770.6
01:34:10	777.9	777.6	777.3	777.6	775.6	774.0	773.4	770.6	776.4	770.6
01:34:20	778.0	777.6	777.3	777.6	775.6	774.0	773.4	770.7	776.4	770.7
01:34:30	777.9	777.5	777.3	777.5	775.5	773.9	773.4	770.6	776.3	770.6
01:34:40	777.9	777.5	777.3	777.6	775.5	774.0	773.4	770.6	776.4	770.6
01:34:50	778.0	777.6	777.3	777.6	775.6	774.1	773.4	770.7	776.4	770.7
01:35:00	778.0	777.5	777.3	777.5	775.6	774.1	773.4	770.7	776.4	770.7
01:35:10	777.9	777.5	777.3	777.5	775.6	774.0	773.4	770.7	776.4	770.7
01:35:20	777.9	777.5	777.4	777.6	775.6	774.0	773.4	770.6	776.4	770.6
01:35:30	778.0	777.6	777.3	777.6	775.5	774.0	773.4	770.7	776.4	770.7
01:35:40	778.0	777.6	777.3	777.6	775.6	774.0	773.4	770.6	776.4	770.6
01:35:50	778.0	777.6	777.4	777.6	775.6	774.1	773.5	770.7	776.5	770.7



Furnace ID: Furnace 1

Survey Start Date: 24-9-06

Survey Start Time: 08:40:00

Technician: John Doe

Survey Measurements

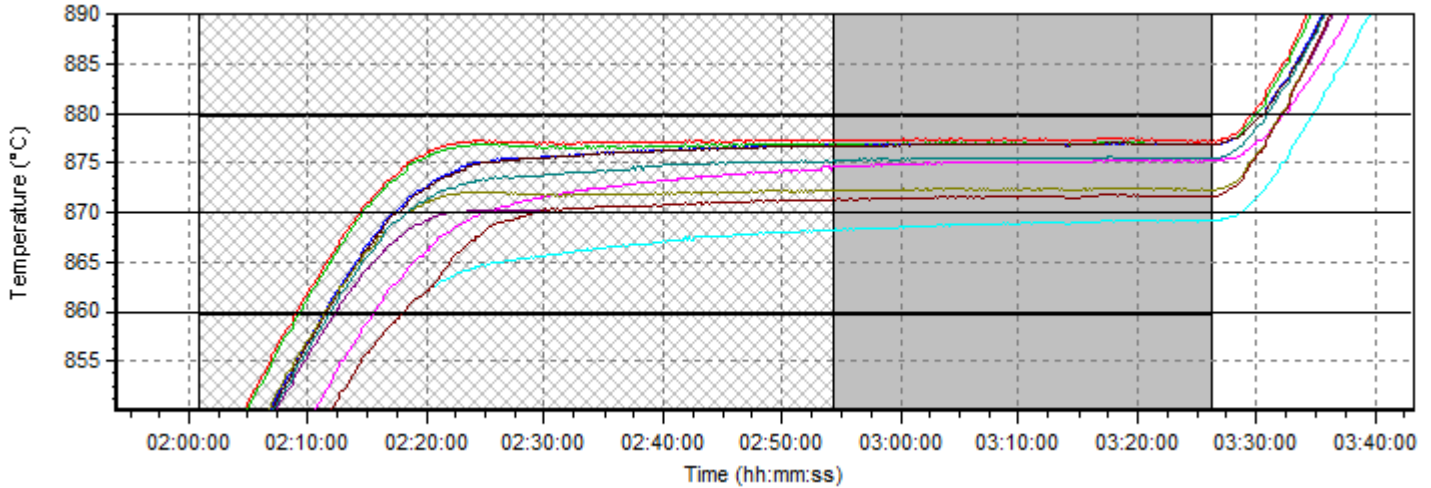
Thermocouple (1-10) and Logger (1-10) Correction Factors applied

Set Point 1 (770.0°C) Tolerance ±10.0°C Survey Time 00:31:44 hh:mm:ss

Overshoot occurred (Maximum 778.3°C)

Time (hh:mm:ss)	#1 (°C)	#2 (°C)	#3 (°C)	#4 (°C)	#5 (°C)	#6 (°C)	#7 (°C)	#8 (°C)	#9 (°C)	#10 (°C)
01:36:00	778.0	777.6	777.4	777.6	775.6	774.1	773.5	770.7	776.5	770.7
01:36:10	778.0	777.6	777.4	777.7	775.6	774.1	773.5	770.7	776.5	770.7

Set Point 2 (870.0°C) Tolerance ±10.0°C Survey Time 00:31:50 hh:mm:ss



Set Point 2 (870.0°C) Tolerance ±10.0°C Survey Time 00:31:50 hh:mm:ss

No overshoot occurred (Maximum 877.4°C)

Time (hh:mm:ss)	#1 (°C)	#2 (°C)	#3 (°C)	#4 (°C)	#5 (°C)	#6 (°C)	#7 (°C)	#8 (°C)	#9 (°C)	#10 (°C)
02:00:50	840.4	839.7	835.3	834.9	827.0	836.1	834.7	825.1	835.0	825.1
02:01:00	840.8	840.1	835.7	835.3	827.4	836.6	835.1	825.5	835.4	825.5
02:01:10	841.2	840.5	836.1	835.7	827.8	836.9	835.5	825.9	835.8	825.9
02:01:20	841.7	841.0	836.6	836.2	828.3	837.4	836.0	826.4	836.2	826.4
02:01:30	842.1	841.4	837.0	836.6	828.7	837.7	836.3	826.7	836.6	826.7
02:01:40	842.5	841.8	837.3	837.0	829.1	838.1	836.7	827.1	837.0	827.1
02:01:50	843.0	842.3	837.8	837.4	829.5	838.6	837.1	827.6	837.3	827.6
02:02:00	843.4	842.7	838.2	837.9	830.0	839.0	837.6	828.0	837.8	828.0
02:02:10	843.8	843.1	838.7	838.3	830.4	839.4	837.9	828.4	838.1	828.4
02:02:20	844.2	843.6	839.0	838.6	830.8	839.8	838.3	828.8	838.6	828.8
02:02:30	844.6	843.9	839.5	839.1	831.2	840.2	838.7	829.2	839.0	829.2
02:02:40	845.0	844.4	839.8	839.4	831.6	840.6	839.2	829.5	839.4	829.5
02:02:50	845.5	844.8	840.3	839.9	832.0	841.0	839.6	830.0	839.8	830.0
02:03:00	845.9	845.2	840.7	840.3	832.4	841.4	839.9	830.4	840.1	830.4
02:03:10	846.3	845.6	841.1	840.7	832.9	841.8	840.4	830.9	840.6	830.9
02:03:20	846.7	846.1	841.6	841.2	833.2	842.3	840.8	831.2	841.0	831.2
02:03:30	847.0	846.4	841.9	841.5	833.5	842.6	841.1	831.5	841.3	831.5
02:03:40	847.5	846.9	842.5	842.0	834.1	843.1	841.6	832.0	841.8	832.0
02:03:50	847.8	847.2	842.7	842.4	834.4	843.4	841.9	832.4	842.2	832.4
02:04:00	848.3	847.7	843.2	842.8	834.9	843.8	842.3	832.8	842.6	832.8
02:04:10	848.7	848.1	843.6	843.3	835.3	844.2	842.7	833.2	843.0	833.2
02:04:20	849.1	848.5	844.1	843.7	835.6	844.6	843.1	833.6	843.4	833.6
02:04:30	849.5	848.9	844.4	844.0	836.0	845.0	843.5	834.0	843.8	834.0
02:04:40	849.9	849.3	844.9	844.5	836.5	845.4	844.0	834.4	844.3	834.4
02:04:50	850.2	849.7	845.3	844.9	836.9	845.7	844.3	834.8	844.6	834.8
02:05:00	850.6	850.0	845.6	845.2	837.2	846.2	844.8	835.1	845.0	835.1
02:05:10	851.0	850.4	846.1	845.7	837.7	846.6	845.1	835.5	845.5	835.5
02:05:20	851.4	850.8	846.5	846.1	838.1	847.0	845.5	835.9	845.8	835.9
02:05:30	851.8	851.2	846.8	846.5	838.5	847.3	845.9	836.3	846.2	836.3
02:05:40	852.2	851.6	847.3	846.9	838.9	847.8	846.3	836.7	846.6	836.7
02:05:50	852.6	852.0	847.7	847.2	839.2	848.1	846.6	837.1	847.0	837.1
02:06:00	853.0	852.4	848.1	847.7	839.6	848.6	847.0	837.5	847.4	837.5
02:06:10	853.3	852.8	848.4	848.1	840.0	848.9	847.4	837.8	847.7	837.8
02:06:20	853.8	853.2	848.8	848.5	840.4	849.3	847.8	838.2	848.2	838.2
02:06:30	854.1	853.6	849.3	848.8	840.8	849.7	848.2	838.6	848.5	838.6
02:06:40	854.6	854.0	849.7	849.2	841.2	850.0	848.5	839.0	848.9	839.0
02:06:50	855.0	854.4	850.0	849.7	841.6	850.4	848.9	839.4	849.4	839.4
02:07:00	855.4	854.8	850.4	850.0	842.1	850.8	849.4	839.8	849.8	839.8
02:07:10	855.8	855.1	850.7	850.3	842.4	851.1	849.6	840.1	850.0	840.1
02:07:20	856.1	855.5	851.1	850.7	842.9	851.5	850.0	840.5	850.4	840.5
02:07:30	856.5	855.9	851.4	851.1	843.2	851.9	850.3	840.9	850.7	840.9
02:07:40	856.9	856.2	851.9	851.4	843.6	852.2	850.6	841.3	851.1	841.3
02:07:50	857.3	856.7	852.3	851.9	844.0	852.6	851.0	841.6	851.5	841.6
02:08:00	857.7	857.0	852.7	852.2	844.4	852.9	851.3	842.1	851.8	842.1
02:08:10	857.9	857.4	853.0	852.6	844.7	853.3	851.7	842.4	852.1	842.4
02:08:20	858.3	857.8	853.4	853.0	845.2	853.7	852.1	842.8	852.6	842.8
02:08:30	858.7	858.1	853.7	853.3	845.5	854.0	852.4	843.1	852.9	843.1
02:08:40	859.0	858.4	854.1	853.8	845.9	854.3	852.7	843.5	853.3	843.5
02:08:50	859.4	858.8	854.6	854.1	846.4	854.7	853.1	843.9	853.7	843.9
02:09:00	859.7	859.1	854.9	854.5	846.6	855.0	853.4	844.2	854.0	844.2
02:09:10	860.0	859.5	855.2	854.8	847.0	855.4	853.8	844.6	854.4	844.6
02:09:20	860.4	859.8	855.6	855.2	847.3	855.7	854.0	844.9	854.7	844.9
02:09:30	860.6	860.1	855.9	855.5	847.7	856.0	854.4	845.2	855.1	845.2
02:09:40	861.0	860.5	856.2	855.9	848.1	856.3	854.7	845.5	855.3	845.5
02:09:50	861.4	860.8	856.6	856.3	848.4	856.7	855.1	845.9	855.8	845.9



Furnace ID: Furnace 1

Survey Start Date: 24-9-06

Survey Start Time: 08:40:00

Technician: John Doe

Survey Measurements

Thermocouple (1-10) and Logger (1-10) Correction Factors applied

Set Point 2 (870.0°C) Tolerance ±10.0°C Survey Time 00:31:50 hh:mm:ss

No overshoot occurred (Maximum 877.4°C)

Time (hh:mm:ss)	#1 (°C)	#2 (°C)	#3 (°C)	#4 (°C)	#5 (°C)	#6 (°C)	#7 (°C)	#8 (°C)	#9 (°C)	#10 (°C)
02:10:00	861.6	861.1	856.9	856.6	848.8	857.0	855.3	846.2	856.1	846.2
02:10:10	862.0	861.5	857.2	856.9	849.1	857.2	855.7	846.5	856.3	846.5
02:10:20	862.4	861.8	857.6	857.3	849.5	857.6	856.1	846.9	856.8	846.9
02:10:30	862.7	862.2	858.0	857.6	849.9	858.0	856.4	847.3	857.1	847.3
02:10:40	863.0	862.4	858.3	857.9	850.2	858.2	856.7	847.5	857.5	847.5
02:10:50	863.3	862.8	858.6	858.3	850.4	858.6	856.9	847.9	857.8	847.9
02:11:00	863.6	863.1	859.0	858.5	850.8	858.9	857.3	848.2	858.1	848.2
02:11:10	864.0	863.5	859.3	858.9	851.1	859.2	857.7	848.5	858.4	848.5
02:11:20	864.3	863.8	859.7	859.3	851.5	859.6	858.0	848.9	858.7	848.9
02:11:30	864.7	864.1	860.0	859.7	851.9	859.9	858.3	849.2	859.0	849.2
02:11:40	865.0	864.4	860.3	859.9	852.2	860.2	858.6	849.5	859.4	849.5
02:11:50	865.4	864.9	860.7	860.3	852.6	860.5	859.0	849.9	859.7	849.9
02:12:00	865.6	865.1	861.0	860.6	853.0	860.8	859.2	850.1	860.0	850.1
02:12:10	866.0	865.5	861.4	860.9	853.3	861.1	859.5	850.5	860.3	850.5
02:12:20	866.3	865.8	861.7	861.3	853.7	861.5	859.8	850.7	860.6	850.7
02:12:30	866.6	866.1	862.0	861.6	854.0	861.7	860.2	851.0	860.9	851.0
02:12:40	866.9	866.4	862.3	861.9	854.3	862.0	860.3	851.3	861.2	851.3
02:12:50	867.3	866.7	862.6	862.2	854.7	862.4	860.7	851.8	861.6	851.8
02:13:00	867.5	867.0	862.9	862.5	855.0	862.6	861.0	852.0	862.0	852.0
02:13:10	867.9	867.3	863.3	862.9	855.3	862.9	861.3	852.3	862.2	852.3
02:13:20	868.1	867.6	863.6	863.2	855.7	863.3	861.6	852.6	862.6	852.6
02:13:30	868.4	867.9	863.9	863.5	856.0	863.5	861.9	853.0	862.9	853.0
02:13:40	868.7	868.2	864.2	863.9	856.3	863.8	862.1	853.3	863.2	853.3
02:13:50	869.0	868.5	864.5	864.1	856.7	864.1	862.5	853.6	863.5	853.6
02:14:00	869.2	868.7	864.8	864.5	856.9	864.3	862.6	853.8	863.8	853.8
02:14:10	869.6	869.1	865.2	864.8	857.3	864.7	863.0	854.3	864.1	854.3
02:14:20	869.8	869.4	865.4	865.1	857.6	864.9	863.2	854.5	864.4	854.5
02:14:30	870.1	869.6	865.7	865.4	857.9	865.2	863.5	854.8	864.7	854.8
02:14:40	870.4	869.9	866.1	865.7	858.3	865.5	863.8	855.1	865.1	855.1
02:14:50	870.6	870.2	866.3	866.0	858.5	865.7	864.0	855.4	865.3	855.4
02:15:00	870.9	870.4	866.6	866.3	858.8	866.0	864.2	855.7	865.5	855.7
02:15:10	871.1	870.6	866.9	866.5	859.1	866.2	864.4	855.9	865.8	855.9
02:15:20	871.3	870.9	867.2	866.8	859.4	866.5	864.7	856.2	866.0	856.2
02:15:30	871.6	871.2	867.5	867.1	859.7	866.7	865.0	856.5	866.3	856.5
02:15:40	871.8	871.4	867.7	867.4	860.0	866.9	865.2	856.7	866.5	856.7
02:15:50	872.0	871.6	867.9	867.6	860.3	867.2	865.4	857.0	866.8	857.0
02:16:00	872.3	871.8	868.2	867.9	860.6	867.4	865.6	857.2	867.1	857.2
02:16:10	872.4	872.0	868.4	868.0	860.8	867.5	865.8	857.5	867.3	857.5
02:16:20	872.7	872.2	868.7	868.3	861.1	867.8	866.0	857.7	867.6	857.7
02:16:30	872.9	872.4	868.9	868.6	861.4	868.0	866.2	857.9	867.8	857.9
02:16:40	873.1	872.6	869.1	868.8	861.6	868.1	866.3	858.1	868.0	858.1
02:16:50	873.3	872.8	869.3	869.0	861.8	868.3	866.6	858.4	868.3	858.4
02:17:00	873.4	873.1	869.6	869.3	862.2	868.6	866.8	858.6	868.5	858.6
02:17:10	873.6	873.2	869.8	869.5	862.4	868.7	866.9	858.8	868.7	858.8
02:17:20	873.8	873.4	870.0	869.7	862.7	868.9	867.2	859.0	868.9	859.0
02:17:30	874.0	873.6	870.2	869.9	862.9	869.1	867.3	859.3	869.1	859.3
02:17:40	874.1	873.8	870.4	870.1	863.1	869.2	867.4	859.4	869.2	859.4
02:17:50	874.3	873.9	870.6	870.3	863.4	869.4	867.6	859.7	869.4	859.7
02:18:00	874.5	874.0	870.7	870.5	863.6	869.5	867.7	859.9	869.6	859.9
02:18:10	874.6	874.2	871.0	870.7	863.9	869.7	867.9	860.0	869.7	860.0
02:18:20	874.8	874.4	871.2	870.9	864.1	869.9	868.1	860.3	869.9	860.3
02:18:30	874.9	874.5	871.4	871.1	864.3	870.1	868.2	860.5	870.1	860.5
02:18:40	875.1	874.7	871.6	871.3	864.6	870.1	868.3	860.7	870.3	860.7
02:18:50	875.2	874.8	871.7	871.4	864.7	870.3	868.4	860.8	870.4	860.8
02:19:00	875.3	875.0	871.9	871.6	864.9	870.3	868.5	861.0	870.5	861.0
02:19:10	875.4	875.1	872.0	871.8	865.2	870.5	868.7	861.2	870.7	861.2
02:19:20	875.5	875.2	872.2	871.9	865.4	870.6	868.7	861.3	870.8	861.3
02:19:30	875.7	875.3	872.3	872.0	865.6	870.7	868.8	861.5	871.0	861.5
02:19:40	875.7	875.4	872.4	872.2	865.7	870.8	869.0	861.6	871.1	861.6
02:19:50	875.8	875.5	872.6	872.4	866.0	871.0	869.1	861.9	871.2	861.9
02:20:00	876.1	875.6	872.8	872.5	866.2	871.1	869.2	862.0	871.4	862.0
02:20:10	876.1	875.7	872.9	872.6	866.3	871.1	869.2	862.1	871.5	862.1
02:20:20	876.2	875.8	873.0	872.8	866.6	871.2	869.3	862.3	871.5	862.3
02:20:30	876.2	875.8	873.1	872.9	866.7	871.3	869.4	862.4	871.7	862.4
02:20:40	876.3	875.9	873.3	873.0	866.9	871.3	869.5	862.5	871.7	862.6
02:20:50	876.4	876.0	873.4	873.2	867.1	871.4	869.5	862.6	871.9	863.0
02:21:00	876.5	876.1	873.5	873.3	867.2	871.5	869.6	862.8	872.0	863.2
02:21:10	876.5	876.1	873.6	873.3	867.4	871.5	869.7	862.9	872.1	863.4
02:21:20	876.6	876.3	873.7	873.5	867.5	871.6	869.8	863.1	872.2	863.7
02:21:30	876.7	876.3	873.8	873.6	867.7	871.6	869.8	863.1	872.2	864.1
02:21:40	876.7	876.3	873.9	873.7	867.8	871.7	869.8	863.2	872.3	864.4
02:21:50	876.8	876.4	874.0	873.7	867.9	871.8	869.9	863.4	872.4	864.8
02:22:00	876.8	876.4	874.1	873.8	868.1	871.8	869.9	863.5	872.5	865.2
02:22:10	876.9	876.5	874.2	873.9	868.2	871.8	869.9	863.5	872.5	865.4
02:22:20	876.9	876.5	874.2	874.0	868.4	871.9	870.0	863.6	872.6	865.6
02:22:30	876.9	876.5	874.3	874.1	868.5	871.8	870.0	863.7	872.6	865.8
02:22:40	877.0	876.6	874.4	874.2	868.6	871.9	870.1	863.9	872.7	866.0
02:22:50	877.0	876.7	874.4	874.2	868.7	871.9	870.1	863.9	872.9	866.1
02:23:00	877.0	876.7	874.5	874.3	868.8	872.0	870.1	864.0	873.0	866.2
02:23:10	877.1	876.7	874.5	874.4	869.0	872.0	870.1	864.1	873.0	866.4
02:23:20	877.0	876.7	874.6	874.4	869.0	872.0	870.1	864.1	873.0	866.6
02:23:30	877.0	876.7	874.7	874.5	869.1	872.0	870.2	864.2	873.1	866.8
02:23:40	877.1	876.7	874.7	874.5	869.2	872.0	870.2	864.2	873.2	867.0
02:23:50	877.1	876.8	874.8	874.6	869.4	872.0	870.3	864.3	873.2	867.2
02:24:00	877.2	876.8	874.9	874.7	869.5	872.1	870.3	864.4	873.2	867.3
02:24:10	877.1	876.8	874.9	874.7	869.5	872.0	870.3	864.5	873.3	867.4
02:24:20	877.2	876.8	875.0	874.8	869.6	872.1	870.3	864.6	873.4	867.5
02:24:30	877.2	876.8	875.0	874.8	869.7	872.1	870.3	864.6	873.3	867.6
02:24:40	877.2	876.9	875.1	874.9	869.9	872.1	870.3	864.7	873.4	867.8
02:24:50	877.2	876.8	875.1	874.9	869.9	872.1	870.3	864.7	873.5	868.0



Furnace ID: Furnace 1

Survey Start Date: 24-9-06

Survey Start Time: 08:40:00

Technician: John Doe

Survey Measurements

Thermocouple (1-10) and Logger (1-10) Correction Factors applied

Set Point 2 (870.0°C) Tolerance ±10.0°C Survey Time 00:31:50 hh:mm:ss

No overshoot occurred (Maximum 877.4°C)

Time (hh:mm:ss)	#1 (°C)	#2 (°C)	#3 (°C)	#4 (°C)	#5 (°C)	#6 (°C)	#7 (°C)	#8 (°C)	#9 (°C)	#10 (°C)
02:25:00	877.1	876.8	875.1	874.9	869.9	872.1	870.3	864.6	873.4	868.2
02:25:10	877.1	876.8	875.1	874.9	870.0	872.0	870.3	864.8	873.4	868.4
02:25:20	877.2	876.8	875.1	875.0	870.1	872.0	870.3	864.8	873.5	868.5
02:25:30	877.1	876.8	875.2	875.0	870.1	872.0	870.3	864.9	873.5	868.6
02:25:40	877.1	876.8	875.2	875.0	870.2	872.0	870.3	864.9	873.6	868.7
02:25:50	877.2	876.8	875.3	875.1	870.3	872.1	870.4	865.0	873.7	868.8
02:26:00	877.1	876.8	875.4	875.1	870.4	872.0	870.3	865.0	873.5	868.9
02:26:10	877.1	876.7	875.3	875.1	870.4	872.0	870.3	865.0	873.6	869.0
02:26:20	877.1	876.8	875.4	875.2	870.6	872.0	870.3	865.1	873.6	869.0
02:26:30	877.1	876.8	875.4	875.2	870.6	872.0	870.3	865.1	873.7	869.0
02:26:40	877.1	876.8	875.4	875.2	870.7	872.0	870.3	865.2	873.7	869.1
02:26:50	877.1	876.8	875.4	875.3	870.7	871.9	870.3	865.2	873.7	869.1
02:27:00	877.1	876.7	875.4	875.2	870.7	871.9	870.3	865.2	873.6	869.1
02:27:10	877.1	876.7	875.4	875.3	870.8	872.0	870.3	865.3	873.6	869.2
02:27:20	877.0	876.6	875.4	875.3	870.8	871.9	870.2	865.3	873.6	869.2
02:27:30	877.1	876.7	875.4	875.3	871.0	872.0	870.3	865.3	873.7	869.3
02:27:40	877.1	876.7	875.4	875.3	871.0	871.9	870.3	865.4	873.7	869.3
02:27:50	877.1	876.6	875.4	875.3	871.1	871.9	870.3	865.4	873.7	869.4
02:28:00	877.0	876.7	875.4	875.4	871.1	871.9	870.3	865.4	873.7	869.5
02:28:10	877.0	876.6	875.4	875.4	871.1	871.8	870.3	865.4	873.7	869.6
02:28:20	877.1	876.6	875.5	875.4	871.2	871.8	870.2	865.4	873.7	869.6
02:28:30	877.0	876.6	875.5	875.4	871.2	871.8	870.2	865.5	873.7	869.7
02:28:40	877.0	876.7	875.5	875.4	871.3	871.9	870.3	865.5	873.7	869.7
02:28:50	877.0	876.6	875.5	875.4	871.3	871.8	870.3	865.6	873.8	869.8
02:29:00	877.0	876.6	875.4	875.5	871.4	871.8	870.2	865.5	873.7	869.9
02:29:10	876.9	876.6	875.5	875.4	871.4	871.8	870.3	865.6	873.8	870.0
02:29:20	876.9	876.5	875.5	875.5	871.4	871.8	870.2	865.6	873.8	870.1
02:29:30	877.0	876.6	875.5	875.5	871.5	871.8	870.3	865.7	873.8	870.1
02:29:40	876.9	876.5	875.5	875.5	871.5	871.8	870.3	865.6	873.8	870.2
02:29:50	876.9	876.5	875.6	875.5	871.6	871.8	870.3	865.7	873.8	870.2
02:30:00	877.0	876.5	875.6	875.5	871.6	871.8	870.3	865.7	873.8	870.3
02:30:10	877.0	876.5	875.6	875.5	871.7	871.7	870.3	865.7	873.9	870.4
02:30:20	876.9	876.5	875.6	875.5	871.6	871.8	870.3	865.8	873.9	870.3
02:30:30	877.0	876.6	875.6	875.5	871.7	871.8	870.3	865.8	873.9	870.3
02:30:40	877.0	876.6	875.6	875.6	871.8	871.8	870.4	865.8	874.0	870.4
02:30:50	876.9	876.5	875.6	875.5	871.7	871.7	870.3	865.9	873.9	870.3
02:31:00	876.9	876.6	875.6	875.6	871.9	871.8	870.4	865.9	874.0	870.4
02:31:10	876.9	876.5	875.6	875.6	871.9	871.7	870.3	865.9	874.0	870.3
02:31:20	876.9	876.5	875.6	875.6	871.9	871.7	870.3	865.9	874.0	870.3
02:31:30	877.0	876.6	875.7	875.7	872.0	871.8	870.4	866.0	874.0	870.4
02:31:40	876.9	876.5	875.7	875.6	872.0	871.7	870.4	866.0	874.1	870.4
02:31:50	876.9	876.6	875.7	875.6	872.0	871.8	870.4	866.0	874.1	870.4
02:32:00	876.9	876.5	875.7	875.6	872.0	871.8	870.4	866.0	874.1	870.4
02:32:10	876.9	876.5	875.8	875.7	872.1	871.8	870.4	866.1	874.1	870.4
02:32:20	876.9	876.5	875.7	875.7	872.1	871.7	870.4	866.0	874.1	870.4
02:32:30	876.9	876.5	875.7	875.7	872.1	871.8	870.4	866.1	874.1	870.4
02:32:40	876.9	876.5	875.8	875.7	872.2	871.8	870.5	866.2	874.1	870.5
02:32:50	877.0	876.5	875.8	875.7	872.2	871.8	870.5	866.2	874.1	870.5
02:33:00	876.9	876.5	875.8	875.8	872.2	871.8	870.4	866.2	874.1	870.4
02:33:10	877.0	876.5	875.8	875.7	872.3	871.8	870.5	866.2	874.1	870.5
02:33:20	877.0	876.6	875.8	875.8	872.3	871.8	870.5	866.2	874.2	870.5
02:33:30	877.0	876.5	875.9	875.8	872.3	871.9	870.5	866.3	874.1	870.5
02:33:40	877.0	876.6	875.9	875.8	872.4	871.9	870.5	866.4	874.2	870.5
02:33:50	877.0	876.6	875.9	875.8	872.4	871.8	870.5	866.3	874.2	870.5
02:34:00	877.0	876.5	875.9	875.8	872.4	871.8	870.5	866.3	874.2	870.5
02:34:10	877.0	876.6	875.9	875.8	872.4	871.8	870.5	866.4	874.2	870.5
02:34:20	877.0	876.5	875.9	875.9	872.5	871.8	870.6	866.4	874.2	870.6
02:34:30	877.0	876.6	876.0	875.9	872.6	871.9	870.6	866.5	874.3	870.6
02:34:40	877.0	876.6	876.0	876.0	872.6	871.9	870.6	866.5	874.3	870.6
02:34:50	877.1	876.6	876.0	876.0	872.6	871.9	870.6	866.5	874.3	870.6
02:35:00	877.0	876.5	876.0	875.9	872.6	871.9	870.6	866.5	874.2	870.6
02:35:10	877.0	876.6	876.1	876.0	872.7	871.9	870.6	866.6	874.3	870.6
02:35:20	877.0	876.5	876.0	875.9	872.7	871.9	870.6	866.6	874.3	870.6
02:35:30	877.0	876.6	876.0	875.9	872.7	871.8	870.6	866.6	874.3	870.6
02:35:40	877.0	876.6	876.0	876.0	872.7	871.9	870.6	866.6	874.3	870.6
02:35:50	877.0	876.6	876.1	875.9	872.8	871.9	870.7	866.7	874.3	870.7
02:36:00	877.1	876.6	876.1	876.0	872.8	871.9	870.7	866.7	874.3	870.7
02:36:10	877.0	876.5	876.0	876.0	872.8	871.8	870.6	866.7	874.3	870.6
02:36:20	877.1	876.5	876.0	876.0	872.8	871.9	870.6	866.7	874.4	870.6
02:36:30	877.0	876.5	876.0	876.0	872.8	871.9	870.6	866.7	874.4	870.6
02:36:40	877.0	876.6	876.1	876.1	872.9	871.9	870.6	866.8	874.4	870.6
02:36:50	877.0	876.5	876.0	876.0	872.9	871.9	870.7	866.7	874.4	870.7
02:37:00	877.0	876.6	876.1	876.1	872.9	871.9	870.7	866.7	874.4	870.7
02:37:10	877.0	876.6	876.1	876.0	872.9	871.9	870.7	866.8	874.4	870.7
02:37:20	877.0	876.6	876.1	876.0	873.0	871.8	870.7	866.8	874.5	870.7
02:37:30	877.1	876.6	876.2	876.0	873.0	871.8	870.7	866.8	874.5	870.7
02:37:40	877.0	876.6	876.0	876.0	873.0	871.8	870.7	866.8	874.4	870.7
02:37:50	877.0	876.6	876.2	876.1	873.1	871.9	870.7	866.9	874.5	870.7
02:38:00	877.0	876.6	876.1	876.1	873.1	871.9	870.7	866.9	874.5	870.7
02:38:10	877.1	876.6	876.2	876.1	873.1	871.9	870.7	866.9	874.5	870.7
02:38:20	877.0	876.5	876.1	876.0	873.1	871.8	870.6	866.9	874.4	870.6
02:38:30	877.0	876.6	876.2	876.0	873.1	871.9	870.7	866.9	874.5	870.7
02:38:40	877.0	876.6	876.1	876.1	873.2	871.9	870.7	866.9	874.5	870.7
02:38:50	877.0	876.6	876.2	876.1	873.2	871.9	870.7	866.9	874.5	870.7
02:39:00	877.0	876.6	876.2	876.1	873.2	871.9	870.7	866.9	874.6	870.7
02:39:10	877.0	876.6	876.2	876.1	873.2	871.9	870.8	867.0	874.5	870.8
02:39:20	877.1	876.6	876.3	876.2	873.2	872.0	870.8	867.0	874.5	870.8
02:39:30	877.0	876.6	876.2	876.2	873.3	871.9	870.7	867.0	874.5	870.7
02:39:40	877.0	876.7	876.2	876.2	873.3	871.9	870.7	867.1	874.6	870.7
02:39:50	877.0	876.6	876.2	876.1	873.3	871.9	870.7	867.1	874.6	870.7



Furnace ID: Furnace 1

Survey Start Date: 24-9-06

Survey Start Time: 08:40:00

Technician: John Doe

Survey Measurements

Thermocouple (1-10) and Logger (1-10) Correction Factors applied

Set Point 2 (870.0°C) Tolerance ±10.0°C Survey Time 00:31:50 hh:mm:ss

No overshoot occurred (Maximum 877.4°C)

Time (hh:mm:ss)	#1 (°C)	#2 (°C)	#3 (°C)	#4 (°C)	#5 (°C)	#6 (°C)	#7 (°C)	#8 (°C)	#9 (°C)	#10 (°C)
02:40:00	877.1	876.7	876.2	876.2	873.4	872.0	870.8	867.2	874.7	870.8
02:40:10	877.1	876.7	876.2	876.2	873.3	871.9	870.8	867.1	874.7	870.8
02:40:20	877.1	876.7	876.2	876.2	873.4	872.0	870.8	867.2	874.7	870.8
02:40:30	877.1	876.7	876.2	876.2	873.4	871.9	870.8	867.2	874.7	870.8
02:40:40	877.0	876.7	876.3	876.2	873.4	872.0	870.8	867.2	874.7	870.8
02:40:50	877.1	876.7	876.3	876.2	873.4	871.9	870.8	867.2	874.7	870.8
02:41:00	877.0	876.7	876.3	876.2	873.4	871.9	870.8	867.2	874.7	870.8
02:41:10	877.1	876.7	876.3	876.2	873.5	872.0	870.9	867.2	874.7	870.9
02:41:20	877.1	876.6	876.3	876.2	873.4	872.0	870.9	867.3	874.7	870.9
02:41:30	877.1	876.7	876.4	876.3	873.5	872.0	870.9	867.3	874.8	870.9
02:41:40	877.1	876.7	876.3	876.2	873.5	872.0	870.9	867.3	874.8	870.9
02:41:50	877.2	876.8	876.3	876.3	873.6	872.0	871.0	867.4	874.8	871.0
02:42:00	877.1	876.7	876.3	876.3	873.5	872.0	870.9	867.3	874.8	870.9
02:42:10	877.2	876.7	876.4	876.3	873.6	872.0	870.9	867.4	874.8	870.9
02:42:20	877.1	876.6	876.3	876.3	873.6	871.9	870.9	867.3	874.8	870.9
02:42:30	877.1	876.7	876.4	876.3	873.6	872.0	870.9	867.3	874.8	870.9
02:42:40	877.2	876.7	876.4	876.3	873.7	872.0	870.9	867.4	874.8	870.9
02:42:50	877.2	876.8	876.5	876.4	873.7	872.0	871.0	867.4	874.8	871.0
02:43:00	877.2	876.7	876.4	876.4	873.7	872.0	871.0	867.4	874.8	871.0
02:43:10	877.1	876.7	876.4	876.3	873.6	871.9	870.9	867.4	874.8	870.9
02:43:20	877.2	876.7	876.4	876.3	873.7	872.0	871.0	867.4	874.8	871.0
02:43:30	877.1	876.7	876.4	876.3	873.7	872.0	870.9	867.5	874.8	870.9
02:43:40	877.1	876.8	876.4	876.4	873.7	872.0	871.0	867.5	874.8	871.0
02:43:50	877.1	876.7	876.4	876.3	873.7	872.0	870.9	867.4	874.8	870.9
02:44:00	877.2	876.8	876.5	876.4	873.8	872.0	871.0	867.5	874.9	871.0
02:44:10	877.2	876.8	876.5	876.4	873.8	872.0	871.0	867.5	874.9	871.0
02:44:20	877.1	876.8	876.5	876.4	873.8	872.0	871.0	867.5	874.8	871.0
02:44:30	877.1	876.7	876.5	876.3	873.7	871.9	871.0	867.5	874.8	871.0
02:44:40	877.2	876.8	876.5	876.4	873.8	872.0	871.0	867.6	874.9	871.0
02:44:50	877.1	876.8	876.5	876.4	873.8	872.0	871.0	867.6	874.9	871.0
02:45:00	877.1	876.7	876.5	876.4	873.9	872.1	871.0	867.6	874.9	871.0
02:45:10	877.1	876.7	876.5	876.4	873.9	872.1	871.0	867.6	874.9	871.0
02:45:20	877.1	876.7	876.5	876.4	873.9	872.1	871.0	867.6	874.8	871.0
02:45:30	877.1	876.7	876.5	876.4	873.9	872.0	871.0	867.6	874.9	871.0
02:45:40	877.1	876.8	876.5	876.4	873.9	872.1	871.0	867.6	874.9	871.0
02:45:50	877.1	876.7	876.5	876.4	873.9	872.0	871.0	867.6	874.9	871.0
02:46:00	877.2	876.8	876.6	876.5	874.0	872.1	871.1	867.7	874.9	871.1
02:46:10	877.2	876.8	876.5	876.5	874.0	872.1	871.1	867.7	874.9	871.1
02:46:20	877.2	876.7	876.5	876.4	873.9	872.1	871.0	867.7	874.9	871.0
02:46:30	877.2	876.8	876.5	876.4	874.0	872.0	871.0	867.7	874.9	871.0
02:46:40	877.1	876.7	876.5	876.4	873.9	872.0	871.0	867.7	874.9	871.0
02:46:50	877.2	876.8	876.6	876.5	874.0	872.1	871.1	867.7	874.9	871.1
02:47:00	877.1	876.7	876.5	876.4	874.0	872.1	871.0	867.7	874.9	871.0
02:47:10	877.2	876.8	876.6	876.5	874.1	872.1	871.1	867.7	875.0	871.1
02:47:20	877.2	876.8	876.5	876.5	874.1	872.1	871.1	867.8	875.0	871.1
02:47:30	877.2	876.8	876.6	876.5	874.1	872.2	871.2	867.8	875.0	871.2
02:47:40	877.1	876.8	876.6	876.5	874.0	872.1	871.1	867.8	875.0	871.1
02:47:50	877.2	876.8	876.6	876.5	874.1	872.1	871.2	867.8	875.0	871.2
02:48:00	877.2	876.8	876.6	876.5	874.1	872.1	871.2	867.8	875.0	871.2
02:48:10	877.3	876.9	876.7	876.6	874.1	872.2	871.2	867.9	875.1	871.2
02:48:20	877.2	876.8	876.6	876.5	874.1	872.1	871.1	867.8	875.0	871.1
02:48:30	877.2	876.8	876.6	876.5	874.2	872.2	871.2	867.9	875.1	871.2
02:48:40	877.2	876.8	876.6	876.6	874.1	872.2	871.2	867.9	875.1	871.2
02:48:50	877.2	876.8	876.7	876.6	874.2	872.2	871.2	867.9	875.1	871.2
02:49:00	877.3	876.8	876.6	876.6	874.2	872.2	871.2	867.9	875.0	871.2
02:49:10	877.3	876.9	876.7	876.6	874.2	872.2	871.2	867.9	875.1	871.2
02:49:20	877.3	876.8	876.6	876.6	874.2	872.2	871.2	867.9	875.1	871.2
02:49:30	877.3	876.9	876.7	876.6	874.2	872.2	871.2	867.9	875.1	871.2
02:49:40	877.2	876.8	876.6	876.6	874.2	872.2	871.1	867.9	875.1	871.1
02:49:50	877.2	876.8	876.7	876.6	874.3	872.2	871.2	867.9	875.1	871.2
02:50:00	877.2	876.8	876.7	876.6	874.2	872.1	871.2	868.0	875.1	871.2
02:50:10	877.2	876.9	876.7	876.6	874.3	872.2	871.3	868.0	875.1	871.3
02:50:20	877.2	876.8	876.6	876.6	874.3	872.2	871.2	868.0	875.0	871.2
02:50:30	877.3	876.8	876.7	876.6	874.3	872.1	871.2	868.0	875.1	871.2
02:50:40	877.1	876.8	876.6	876.5	874.2	872.1	871.2	867.9	875.0	871.2
02:50:50	877.2	876.8	876.6	876.6	874.3	872.2	871.2	868.0	875.1	871.2
02:51:00	877.2	876.8	876.6	876.6	874.3	872.1	871.2	868.0	875.0	871.2
02:51:10	877.2	876.8	876.6	876.6	874.3	872.1	871.2	868.0	875.0	871.2
02:51:20	877.3	876.8	876.6	876.6	874.3	872.2	871.2	868.0	875.1	871.2
02:51:30	877.2	876.8	876.6	876.6	874.2	872.1	871.2	868.0	875.1	871.2
02:51:40	877.3	876.9	876.6	876.6	874.4	872.2	871.3	868.1	875.2	871.3
02:51:50	877.3	876.8	876.7	876.6	874.4	872.1	871.2	868.1	875.1	871.2
02:52:00	877.2	876.8	876.7	876.6	874.4	872.2	871.2	868.1	875.2	871.2
02:52:10	877.2	876.8	876.6	876.6	874.3	872.1	871.2	868.0	875.1	871.2
02:52:20	877.2	876.8	876.6	876.6	874.4	872.2	871.2	868.1	875.1	871.2
02:52:30	877.2	876.8	876.6	876.6	874.4	872.2	871.2	868.0	875.1	871.2
02:52:40	877.2	876.8	876.7	876.6	874.4	872.1	871.3	868.1	875.1	871.3
02:52:50	877.3	876.8	876.7	876.6	874.4	872.2	871.2	868.1	875.1	871.2
02:53:00	877.3	876.8	876.7	876.6	874.4	872.2	871.3	868.2	875.1	871.3
02:53:10	877.1	876.8	876.6	876.6	874.4	872.2	871.3	868.1	875.1	871.3
02:53:20	877.3	876.9	876.7	876.6	874.4	872.2	871.3	868.1	875.1	871.3
02:53:30	877.2	876.8	876.7	876.7	874.5	872.3	871.3	868.1	875.1	871.3
02:53:40	877.3	876.9	876.8	876.7	874.5	872.3	871.3	868.2	875.3	871.3
02:53:50	877.2	876.9	876.8	876.7	874.5	872.2	871.3	868.1	875.2	871.3
02:54:00	877.2	876.8	876.7	876.6	874.5	872.2	871.3	868.2	875.1	871.3
02:54:10	877.2	876.8	876.7	876.6	874.4	872.2	871.2	868.2	875.1	871.2
02:54:20	877.3	876.9	876.7	876.7	874.5	872.2	871.4	868.2	875.2	871.4
02:54:30	877.3	876.8	876.7	876.6	874.5	872.2	871.3	868.2	875.1	871.3
02:54:40	877.2	876.9	876.8	876.8	874.5	872.3	871.3	868.3	875.3	871.3
02:54:50	877.3	876.9	876.7	876.7	874.5	872.2	871.4	868.2	875.3	871.4



Furnace ID: Furnace 1

Survey Start Date: 24-9-06

Survey Start Time: 08:40:00

Technician: John Doe

Survey Measurements

Thermocouple (1-10) and Logger (1-10) Correction Factors applied

Set Point 2 (870.0°C) Tolerance ±10.0°C Survey Time 00:31:50 hh:mm:ss

No overshoot occurred (Maximum 877.4°C)

Time (hh:mm:ss)	#1 (°C)	#2 (°C)	#3 (°C)	#4 (°C)	#5 (°C)	#6 (°C)	#7 (°C)	#8 (°C)	#9 (°C)	#10 (°C)
02:55:00	877.2	876.8	876.7	876.6	874.5	872.2	871.3	868.2	875.2	871.3
02:55:10	877.2	876.8	876.7	876.7	874.5	872.2	871.3	868.3	875.2	871.3
02:55:20	877.2	876.9	876.7	876.7	874.6	872.2	871.3	868.3	875.3	871.3
02:55:30	877.3	876.8	876.7	876.6	874.5	872.2	871.3	868.2	875.3	871.3
02:55:40	877.3	876.9	876.7	876.7	874.5	872.3	871.4	868.3	875.3	871.4
02:55:50	877.3	876.9	876.7	876.7	874.5	872.2	871.4	868.3	875.3	871.4
02:56:00	877.3	876.8	876.7	876.7	874.5	872.2	871.3	868.2	875.3	871.3
02:56:10	877.3	876.8	876.7	876.7	874.6	872.2	871.3	868.3	875.3	871.3
02:56:20	877.2	876.8	876.7	876.7	874.5	872.2	871.3	868.3	875.3	871.3
02:56:30	877.3	876.8	876.7	876.7	874.6	872.2	871.4	868.3	875.3	871.4
02:56:40	877.3	876.9	876.7	876.7	874.6	872.3	871.4	868.4	875.4	871.4
02:56:50	877.3	876.9	876.7	876.7	874.5	872.2	871.4	868.3	875.3	871.4
02:57:00	877.3	876.9	876.7	876.7	874.6	872.2	871.4	868.3	875.4	871.4
02:57:10	877.3	876.9	876.8	876.7	874.6	872.2	871.4	868.3	875.3	871.4
02:57:20	877.3	876.9	876.7	876.7	874.6	872.2	871.3	868.3	875.3	871.3
02:57:30	877.3	876.9	876.7	876.7	874.7	872.3	871.4	868.4	875.4	871.4
02:57:40	877.3	876.9	876.8	876.7	874.6	872.3	871.4	868.4	875.3	871.4
02:57:50	877.3	876.9	876.8	876.7	874.7	872.3	871.4	868.3	875.3	871.4
02:58:00	877.3	876.9	876.8	876.7	874.7	872.3	871.4	868.4	875.4	871.4
02:58:10	877.3	876.9	876.7	876.7	874.7	872.3	871.4	868.4	875.4	871.4
02:58:20	877.3	876.9	876.8	876.7	874.7	872.3	871.4	868.4	875.4	871.4
02:58:30	877.2	876.8	876.7	876.7	874.6	872.3	871.4	868.4	875.3	871.4
02:58:40	877.3	876.9	876.7	876.8	874.7	872.3	871.4	868.4	875.4	871.4
02:58:50	877.3	876.8	876.8	876.7	874.7	872.3	871.5	868.4	875.4	871.5
02:59:00	877.3	877.0	876.8	876.7	874.7	872.3	871.5	868.4	875.4	871.5
02:59:10	877.3	876.9	876.8	876.8	874.7	872.3	871.5	868.4	875.3	871.5
02:59:20	877.3	876.8	876.8	876.7	874.7	872.3	871.4	868.4	875.3	871.4
02:59:30	877.3	876.9	876.7	876.7	874.7	872.3	871.4	868.4	875.2	871.4
02:59:40	877.3	876.8	876.8	876.8	874.7	872.3	871.4	868.4	875.3	871.4
02:59:50	877.3	876.9	876.8	876.7	874.8	872.3	871.5	868.5	875.3	871.5
03:00:00	877.3	876.9	876.8	876.8	874.8	872.3	871.5	868.5	875.4	871.5
03:00:10	877.3	876.9	876.8	876.8	874.8	872.3	871.5	868.4	875.4	871.5
03:00:20	877.4	877.0	876.8	876.8	874.8	872.4	871.5	868.5	875.4	871.5
03:00:30	877.3	876.9	876.8	876.8	874.7	872.3	871.5	868.5	875.3	871.5
03:00:40	877.3	877.0	876.8	876.8	874.8	872.3	871.5	868.5	875.4	871.5
03:00:50	877.3	876.9	876.8	876.7	874.7	872.3	871.4	868.5	875.3	871.4
03:01:00	877.3	876.9	876.9	876.8	874.8	872.3	871.5	868.6	875.4	871.5
03:01:10	877.3	876.9	876.8	876.8	874.8	872.3	871.5	868.6	875.4	871.5
03:01:20	877.4	876.9	876.9	876.8	874.8	872.4	871.5	868.5	875.4	871.5
03:01:30	877.3	876.9	876.8	876.8	874.7	872.3	871.4	868.5	875.4	871.4
03:01:40	877.3	876.9	876.9	876.8	874.8	872.3	871.5	868.6	875.4	871.5
03:01:50	877.3	876.9	876.8	876.8	874.8	872.3	871.5	868.6	875.4	871.5
03:02:00	877.4	877.0	876.8	876.8	874.9	872.4	871.5	868.6	875.4	871.5
03:02:10	877.3	876.9	876.8	876.8	874.8	872.4	871.5	868.5	875.4	871.5
03:02:20	877.3	876.9	876.8	876.8	874.9	872.3	871.5	868.6	875.4	871.5
03:02:30	877.3	877.0	876.8	876.8	874.9	872.3	871.5	868.6	875.4	871.5
03:02:40	877.3	876.9	876.8	876.8	874.8	872.3	871.5	868.6	875.4	871.5
03:02:50	877.3	876.9	876.8	876.8	874.8	872.4	871.5	868.6	875.4	871.5
03:03:00	877.3	877.0	876.9	876.8	874.8	872.4	871.6	868.6	875.4	871.6
03:03:10	877.3	876.9	876.9	876.8	874.9	872.4	871.5	868.7	875.4	871.5
03:03:20	877.4	877.0	876.9	876.8	874.9	872.4	871.6	868.7	875.4	871.6
03:03:30	877.3	877.0	876.9	876.8	874.8	872.4	871.6	868.7	875.4	871.6
03:03:40	877.3	876.9	876.8	876.8	874.9	872.3	871.6	868.6	875.4	871.6
03:03:50	877.3	877.0	876.8	876.8	874.9	872.4	871.5	868.7	875.4	871.5
03:04:00	877.4	876.9	876.8	876.8	874.9	872.4	871.6	868.6	875.4	871.6
03:04:10	877.3	876.9	876.9	876.8	874.9	872.4	871.6	868.7	875.4	871.6
03:04:20	877.4	877.0	876.9	876.8	874.9	872.4	871.6	868.7	875.4	871.6
03:04:30	877.3	877.0	876.9	876.8	874.9	872.4	871.6	868.7	875.4	871.6
03:04:40	877.3	877.0	876.9	876.8	874.9	872.4	871.5	868.7	875.4	871.5
03:04:50	877.3	876.9	876.8	876.8	874.9	872.4	871.6	868.7	875.4	871.6
03:05:00	877.4	876.9	876.9	876.9	875.0	872.4	871.6	868.7	875.4	871.6
03:05:10	877.4	877.0	876.9	876.9	874.9	872.4	871.6	868.7	875.4	871.6
03:05:20	877.3	876.9	876.9	876.9	874.9	872.4	871.6	868.7	875.4	871.6
03:05:30	877.3	877.0	876.8	876.8	874.9	872.3	871.6	868.7	875.4	871.6
03:05:40	877.3	876.9	876.8	876.8	874.9	872.3	871.5	868.7	875.4	871.5
03:05:50	877.3	876.9	876.8	876.8	874.9	872.4	871.6	868.7	875.4	871.6
03:06:00	877.3	876.9	876.9	876.8	875.0	872.4	871.6	868.7	875.4	871.6
03:06:10	877.3	876.9	876.8	876.9	874.9	872.3	871.5	868.7	875.4	871.5
03:06:20	877.3	877.0	876.9	876.9	875.0	872.3	871.6	868.7	875.5	871.6
03:06:30	877.3	876.9	876.8	876.9	875.0	872.3	871.6	868.8	875.4	871.6
03:06:40	877.3	876.9	876.8	876.9	875.0	872.4	871.6	868.7	875.4	871.6
03:06:50	877.3	876.9	876.8	876.8	874.9	872.3	871.5	868.7	875.4	871.5
03:07:00	877.3	876.9	876.8	876.8	874.9	872.4	871.5	868.7	875.4	871.5
03:07:10	877.3	876.9	876.8	876.8	874.9	872.3	871.6	868.8	875.4	871.6
03:07:20	877.3	877.0	876.8	876.9	875.0	872.4	871.6	868.8	875.4	871.6
03:07:30	877.3	877.0	876.8	876.9	874.9	872.3	871.6	868.8	875.4	871.6
03:07:40	877.4	876.9	876.9	876.9	875.0	872.3	871.6	868.8	875.4	871.6
03:07:50	877.3	877.0	876.8	876.9	875.0	872.3	871.6	868.7	875.4	871.6
03:08:00	877.3	876.9	876.8	876.9	875.0	872.3	871.6	868.8	875.4	871.6
03:08:10	877.3	876.9	876.8	876.8	875.0	872.3	871.6	868.7	875.4	871.6
03:08:20	877.3	876.9	876.9	876.9	875.0	872.3	871.6	868.8	875.4	871.6
03:08:30	877.3	876.9	876.8	876.8	875.0	872.3	871.6	868.8	875.4	871.6
03:08:40	877.4	877.0	876.9	876.9	875.1	872.4	871.7	868.9	875.4	871.7
03:08:50	877.4	877.0	876.9	876.9	875.0	872.3	871.6	868.8	875.4	871.6
03:09:00	877.3	876.9	876.9	876.9	875.0	872.4	871.6	868.9	875.4	871.6
03:09:10	877.3	876.9	876.8	876.8	875.0	872.3	871.6	868.8	875.4	871.6
03:09:20	877.3	877.0	876.9	876.9	875.0	872.4	871.6	868.8	875.5	871.6
03:09:30	877.3	876.9	876.8	876.9	875.0	872.3	871.6	868.8	875.4	871.6
03:09:40	877.3	877.0	876.8	876.8	875.0	872.4	871.6	868.8	875.4	871.6
03:09:50	877.3	876.9	876.8	876.8	875.0	872.3	871.5	868.7	875.4	871.5



Furnace ID: Furnace 1

Survey Start Date: 24-9-06

Survey Start Time: 08:40:00

Technician: John Doe

Survey Measurements

Thermocouple (1-10) and Logger (1-10) Correction Factors applied

Set Point 2 (870.0°C) Tolerance ±10.0°C Survey Time 00:31:50 hh:mm:ss**No overshoot occurred (Maximum 877.4°C)**

Time (hh:mm:ss)	#1 (°C)	#2 (°C)	#3 (°C)	#4 (°C)	#5 (°C)	#6 (°C)	#7 (°C)	#8 (°C)	#9 (°C)	#10 (°C)
03:10:00	877.3	876.9	876.8	876.8	875.0	872.3	871.6	868.8	875.4	871.6
03:10:10	877.2	876.9	876.8	876.8	875.0	872.3	871.6	868.8	875.4	871.6
03:10:20	877.3	876.9	876.8	876.9	875.0	872.3	871.6	868.9	875.4	871.6
03:10:30	877.4	877.0	876.9	876.9	875.0	872.4	871.7	868.9	875.4	871.7
03:10:40	877.3	876.9	876.9	876.9	875.0	872.4	871.6	868.9	875.4	871.6
03:10:50	877.3	876.9	876.9	876.9	875.0	872.4	871.6	868.9	875.4	871.6
03:11:00	877.3	876.9	876.8	876.9	875.1	872.3	871.6	868.8	875.4	871.6
03:11:10	877.3	876.9	876.9	876.9	875.1	872.3	871.7	868.9	875.4	871.7
03:11:20	877.3	876.9	876.8	876.9	875.1	872.3	871.6	868.9	875.4	871.6
03:11:30	877.3	876.9	876.9	876.9	875.0	872.4	871.6	868.9	875.4	871.6
03:11:40	877.3	876.9	876.8	876.9	875.0	872.3	871.6	868.9	875.4	871.6
03:11:50	877.4	876.9	876.9	876.9	875.1	872.4	871.6	868.9	875.4	871.6
03:12:00	877.3	876.9	876.8	876.9	875.0	872.3	871.6	868.9	875.4	871.6
03:12:10	877.3	876.9	876.9	876.9	875.1	872.4	871.7	868.9	875.4	871.7
03:12:20	877.4	876.9	876.9	876.9	875.1	872.4	871.7	868.9	875.5	871.7
03:12:30	877.3	876.9	876.9	876.9	875.0	872.4	871.6	868.9	875.4	871.6
03:12:40	877.3	876.9	876.9	876.9	875.1	872.4	871.7	869.0	875.4	871.7
03:12:50	877.3	876.9	876.9	876.9	875.1	872.4	871.6	869.0	875.4	871.6
03:13:00	877.3	876.9	876.9	876.9	875.1	872.4	871.6	868.9	875.4	871.6
03:13:10	877.3	876.9	876.8	876.9	875.0	872.4	871.7	868.9	875.4	871.7
03:13:20	877.2	876.9	876.8	876.8	875.0	872.3	871.6	868.9	875.4	871.6
03:13:30	877.2	876.9	876.9	876.9	875.1	872.4	871.6	869.0	875.4	871.6
03:13:40	877.2	876.9	876.8	876.8	875.1	872.3	871.6	868.9	875.4	871.6
03:13:50	877.2	876.8	876.8	876.8	875.1	872.3	871.6	868.9	875.4	871.6
03:14:00	877.2	876.8	876.8	876.7	875.0	872.3	871.5	868.8	875.4	871.5
03:14:10	877.2	876.9	876.7	876.8	875.0	872.3	871.5	868.8	875.4	871.5
03:14:20	877.1	876.8	876.7	876.7	875.0	872.2	871.5	868.8	875.4	871.5
03:14:30	877.2	876.9	876.8	876.8	875.1	872.3	871.5	868.9	875.4	871.5
03:14:40	877.2	876.8	876.8	876.8	875.1	872.2	871.5	868.9	875.4	871.5
03:14:50	877.3	876.9	876.8	876.8	875.0	872.3	871.5	868.9	875.4	871.5
03:15:00	877.2	876.8	876.8	876.8	875.0	872.3	871.5	868.9	875.4	871.5
03:15:10	877.2	876.8	876.8	876.8	875.1	872.3	871.6	868.9	875.4	871.6
03:15:20	877.3	876.9	876.8	876.9	875.1	872.4	871.6	869.0	875.5	871.6
03:15:30	877.3	876.8	876.8	876.8	875.1	872.3	871.6	869.0	875.4	871.6
03:15:40	877.3	876.9	876.8	876.8	875.1	872.4	871.7	868.9	875.4	871.7
03:15:50	877.3	876.9	876.8	876.9	875.1	872.3	871.7	869.0	875.4	871.7
03:16:00	877.3	876.9	876.8	876.9	875.1	872.4	871.7	869.0	875.5	871.7
03:16:10	877.3	876.9	876.8	876.9	875.1	872.3	871.7	869.0	875.4	871.7
03:16:20	877.3	877.0	876.9	876.9	875.2	872.4	871.7	869.0	875.4	871.7
03:16:30	877.3	877.0	876.9	876.9	875.2	872.4	871.7	869.0	875.4	871.7
03:16:40	877.4	876.9	876.9	876.9	875.2	872.4	871.7	869.0	875.5	871.7
03:16:50	877.4	877.0	876.9	876.9	875.2	872.4	871.8	869.0	875.5	871.8
03:17:00	877.4	877.0	876.9	876.9	875.1	872.5	871.8	869.1	875.5	871.8
03:17:10	877.4	877.0	876.9	877.0	875.2	872.5	871.8	869.1	875.5	871.8
03:17:20	877.4	877.1	876.9	877.0	875.2	872.5	871.8	869.1	875.6	871.8
03:17:30	877.4	877.0	877.0	877.0	875.2	872.5	871.8	869.1	875.5	871.8
03:17:40	877.4	877.0	876.9	876.9	875.2	872.5	871.8	869.1	875.6	871.8
03:17:50	877.4	877.0	876.9	877.0	875.2	872.5	871.8	869.1	875.6	871.8
03:18:00	877.4	877.0	877.0	877.0	875.2	872.5	871.8	869.0	875.5	871.8
03:18:10	877.4	877.0	876.9	877.0	875.2	872.5	871.8	869.1	875.5	871.8
03:18:20	877.4	876.9	876.9	877.0	875.2	872.5	871.7	869.1	875.5	871.7
03:18:30	877.4	877.0	876.9	876.9	875.3	872.5	871.8	869.1	875.5	871.8
03:18:40	877.4	877.1	876.9	877.0	875.3	872.5	871.8	869.1	875.5	871.8
03:18:50	877.3	877.0	876.9	877.0	875.2	872.5	871.8	869.1	875.5	871.8
03:19:00	877.4	877.0	877.0	877.0	875.2	872.5	871.8	869.1	875.5	871.8
03:19:10	877.3	877.0	876.9	876.9	875.2	872.5	871.7	869.1	875.5	871.7
03:19:20	877.4	877.0	877.0	877.0	875.2	872.5	871.7	869.1	875.5	871.7
03:19:30	877.4	877.0	876.9	876.9	875.2	872.5	871.7	869.1	875.5	871.7
03:19:40	877.4	877.0	876.9	876.9	875.2	872.5	871.8	869.1	875.5	871.8
03:19:50	877.3	876.9	876.9	876.9	875.2	872.4	871.7	869.1	875.5	871.7
03:20:00	877.3	877.0	876.9	876.9	875.2	872.4	871.8	869.1	875.5	871.8
03:20:10	877.3	877.0	876.8	876.9	875.2	872.4	871.7	869.1	875.5	871.7
03:20:20	877.4	877.0	876.9	876.9	875.2	872.4	871.7	869.1	875.5	871.7
03:20:30	877.3	877.0	876.9	876.9	875.2	872.4	871.7	869.1	875.5	871.7
03:20:40	877.3	876.9	876.8	876.9	875.2	872.4	871.7	869.1	875.5	871.7
03:20:50	877.3	876.9	876.9	876.9	875.2	872.4	871.7	869.1	875.5	871.7
03:21:00	877.3	876.9	876.9	876.9	875.1	872.4	871.7	869.1	875.4	871.7
03:21:10	877.4	876.9	876.9	876.9	875.2	872.4	871.6	869.1	875.4	871.6
03:21:20	877.3	876.9	876.9	876.9	875.2	872.3	871.7	869.1	875.4	871.7
03:21:30	877.3	877.0	876.9	877.0	875.3	872.4	871.7	869.2	875.5	871.7
03:21:40	877.3	876.9	876.9	876.9	875.2	872.4	871.7	869.0	875.4	871.7
03:21:50	877.3	876.9	876.9	876.9	875.2	872.4	871.7	869.1	875.4	871.7
03:22:00	877.3	876.9	876.8	876.9	875.1	872.4	871.7	869.1	875.4	871.7
03:22:10	877.2	876.9	876.9	876.9	875.2	872.4	871.7	869.1	875.5	871.7
03:22:20	877.3	876.9	876.9	876.9	875.2	872.4	871.7	869.1	875.4	871.7
03:22:30	877.3	876.9	876.9	876.9	875.2	872.4	871.7	869.2	875.5	871.7
03:22:40	877.2	876.9	876.8	876.9	875.2	872.4	871.7	869.1	875.5	871.7
03:22:50	877.3	876.9	876.9	876.9	875.3	872.4	871.6	869.1	875.4	871.6
03:23:00	877.2	876.8	876.8	876.8	875.1	872.3	871.6	869.0	875.4	871.6
03:23:10	877.3	876.9	876.9	876.9	875.2	872.4	871.7	869.1	875.4	871.7
03:23:20	877.2	876.9	876.8	876.8	875.1	872.3	871.7	869.1	875.4	871.7
03:23:30	877.3	876.9	876.9	876.9	875.2	872.4	871.7	869.1	875.4	871.7
03:23:40	877.2	876.9	876.8	876.8	875.1	872.3	871.7	869.1	875.4	871.7
03:23:50	877.2	876.9	876.9	876.9	875.3	872.4	871.7	869.2	875.5	871.7
03:24:00	877.2	876.9	876.8	876.9	875.2	872.4	871.7	869.1	875.4	871.7
03:24:10	877.1	876.8	876.8	876.8	875.2	872.3	871.6	869.1	875.4	871.6
03:24:20	877.2	876.8	876.8	876.8	875.2	872.3	871.7	869.1	875.4	871.7
03:24:30	877.2	876.8	876.8	876.9	875.1	872.3	871.7	869.1	875.4	871.7
03:24:40	877.1	876.8	876.8	876.9	875.1	872.2	871.6	869.1	875.4	871.6
03:24:50	877.1	876.8	876.8	876.9	875.2	872.3	871.6	869.1	875.4	871.6



Furnace ID: Furnace 1

Survey Start Date: 24-9-06

Survey Start Time: 08:40:00

Technician: John Doe

Survey Measurements

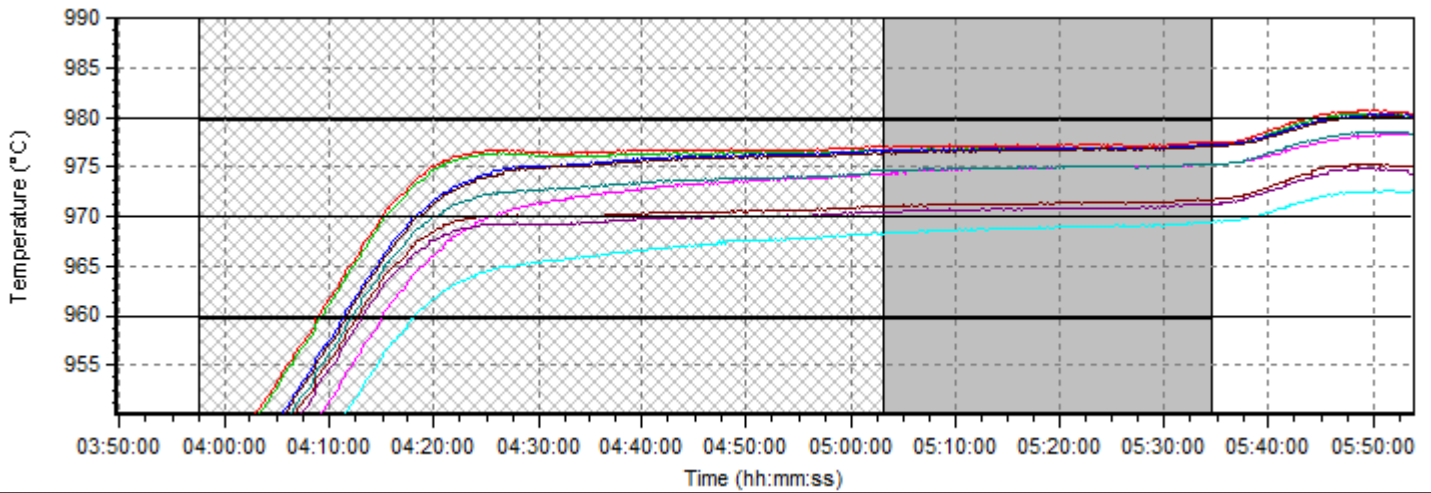
Thermocouple (1-10) and Logger (1-10) Correction Factors applied

Set Point 2 (870.0°C) Tolerance ±10.0°C Survey Time 00:31:50 hh:mm:ss

No overshoot occurred (Maximum 877.4°C)

Time (hh:mm:ss)	#1 (°C)	#2 (°C)	#3 (°C)	#4 (°C)	#5 (°C)	#6 (°C)	#7 (°C)	#8 (°C)	#9 (°C)	#10 (°C)
03:25:00	877.2	876.8	876.8	876.8	875.1	872.3	871.6	869.1	875.4	871.6
03:25:10	877.1	876.8	876.8	876.8	875.1	872.3	871.6	869.0	875.4	871.6
03:25:20	877.1	876.8	876.8	876.8	875.2	872.2	871.6	869.1	875.4	871.6
03:25:30	877.2	876.8	876.8	876.9	875.1	872.4	871.7	869.1	875.4	871.7
03:25:40	877.2	876.8	876.8	876.9	875.2	872.3	871.6	869.1	875.4	871.6
03:25:50	877.1	876.8	876.8	876.9	875.2	872.3	871.6	869.1	875.4	871.6
03:26:00	877.2	876.8	876.8	876.9	875.2	872.3	871.6	869.1	875.4	871.6
03:26:10	877.1	876.8	876.8	876.8	875.2	872.3	871.6	869.1	875.4	871.6

Set Point 3 (970.0°C) Tolerance ±10.0°C Survey Time 00:31:20 hh:mm:ss



Set Point 3 (970.0°C) Tolerance ±10.0°C Survey Time 00:31:20 hh:mm:ss

No overshoot occurred (Maximum 977.4°C)

Time (hh:mm:ss)	#1 (°C)	#2 (°C)	#3 (°C)	#4 (°C)	#5 (°C)	#6 (°C)	#7 (°C)	#8 (°C)	#9 (°C)	#10 (°C)
03:57:30	940.2	939.7	935.9	935.5	929.4	934.5	933.6	925.9	934.8	934.5
03:57:40	940.5	940.0	936.2	935.8	929.7	934.8	933.8	926.3	935.2	934.8
03:57:50	940.8	940.3	936.6	936.1	930.0	935.1	934.1	926.5	935.4	935.1
03:58:00	941.2	940.7	936.9	936.4	930.4	935.4	934.5	926.9	935.7	935.4
03:58:10	941.5	941.0	937.2	936.7	930.6	935.7	934.7	927.1	936.0	935.7
03:58:20	941.8	941.3	937.6	937.1	931.0	936.1	935.0	927.5	936.4	936.1
03:58:30	942.1	941.6	937.9	937.4	931.3	936.4	935.3	927.8	936.7	936.4
03:58:40	942.4	941.9	938.1	937.7	931.7	936.7	935.7	928.1	937.0	936.7
03:58:50	942.8	942.2	938.5	938.0	932.0	937.0	936.0	928.4	937.3	937.0
03:59:00	943.0	942.5	938.8	938.2	932.2	937.3	936.3	928.7	937.6	937.3
03:59:10	943.3	942.8	939.1	938.6	932.5	937.5	936.5	929.0	937.8	937.5
03:59:20	943.7	943.2	939.4	938.9	932.9	938.0	936.9	929.3	938.2	938.0
03:59:30	944.0	943.5	939.7	939.2	933.2	938.2	937.1	929.6	938.5	938.2
03:59:40	944.3	943.8	940.0	939.6	933.5	938.5	937.5	929.9	938.8	938.5
03:59:50	944.5	944.1	940.2	939.9	933.8	938.8	937.7	930.2	939.1	938.8
04:00:00	944.8	944.4	940.6	940.1	934.1	939.0	938.1	930.5	939.4	939.0
04:00:10	945.2	944.6	940.9	940.5	934.4	939.4	938.3	930.8	939.8	939.4
04:00:20	945.4	944.9	941.2	940.8	934.7	939.7	938.7	931.1	940.0	939.7
04:00:30	945.8	945.2	941.5	941.1	935.0	940.0	939.0	931.5	940.4	940.0
04:00:40	946.0	945.5	941.9	941.4	935.3	940.3	939.3	931.7	940.7	940.3
04:00:50	946.3	945.8	942.2	941.7	935.6	940.6	939.6	932.0	941.0	940.6
04:01:00	946.7	946.1	942.5	942.0	935.9	940.9	939.8	932.3	941.2	940.9
04:01:10	947.0	946.5	942.7	942.3	936.2	941.2	940.1	932.6	941.6	941.2
04:01:20	947.2	946.7	943.0	942.6	936.5	941.4	940.4	932.8	941.9	941.4
04:01:30	947.6	947.0	943.4	942.8	936.8	941.7	940.8	933.2	942.2	941.7
04:01:40	947.8	947.3	943.6	943.2	937.1	942.0	941.0	933.5	942.5	942.0
04:01:50	948.2	947.6	944.0	943.5	937.4	942.3	941.3	933.8	942.8	942.3
04:02:00	948.4	947.9	944.2	943.8	937.7	942.6	941.6	934.0	943.1	942.6
04:02:10	948.7	948.2	944.5	944.1	938.0	942.9	941.9	934.3	943.4	942.9
04:02:20	949.0	948.6	944.9	944.4	938.4	943.2	942.2	934.7	943.7	943.2
04:02:30	949.3	948.8	945.1	944.7	938.6	943.4	942.5	935.0	943.9	943.4
04:02:40	949.6	949.2	945.4	945.0	939.0	943.8	942.8	935.3	944.3	943.8
04:02:50	949.9	949.4	945.7	945.3	939.2	944.1	943.1	935.5	944.5	944.1
04:03:00	950.1	949.7	946.0	945.6	939.6	944.4	943.4	935.8	944.8	944.4
04:03:10	950.4	950.0	946.3	945.9	939.8	944.6	943.6	936.1	945.0	944.6
04:03:20	950.7	950.2	946.6	946.1	940.2	944.9	943.9	936.4	945.4	944.9
04:03:30	950.9	950.4	946.8	946.4	940.4	945.1	944.1	936.6	945.6	945.1
04:03:40	951.2	950.7	947.1	946.7	940.7	945.3	944.4	936.9	945.9	945.3
04:03:50	951.4	950.9	947.4	946.9	941.0	945.7	944.6	937.3	946.1	945.7
04:04:00	951.8	951.3	947.7	947.2	941.3	945.9	944.9	937.5	946.5	945.9
04:04:10	952.0	951.5	947.9	947.5	941.6	946.1	945.1	937.7	946.6	946.1
04:04:20	952.2	951.8	948.2	947.7	941.8	946.3	945.4	938.0	946.9	946.3
04:04:30	952.5	952.0	948.5	948.1	942.1	946.6	945.7	938.4	947.2	946.6
04:04:40	952.7	952.3	948.8	948.3	942.4	946.9	945.9	938.6	947.5	946.9
04:04:50	953.0	952.6	949.1	948.6	942.7	947.2	946.2	938.9	947.8	947.2
04:05:00	953.3	952.8	949.4	948.9	943.0	947.4	946.4	939.1	948.1	947.4
04:05:10	953.6	953.1	949.6	949.2	943.4	947.7	946.7	939.5	948.4	947.7
04:05:20	953.8	953.3	949.9	949.4	943.6	947.9	947.0	939.7	948.6	947.9
04:05:30	954.1	953.5	950.1	949.7	943.9	948.2	947.2	940.0	948.8	948.2



Furnace ID: Furnace 1

Survey Start Date: 24-9-06

Survey Start Time: 08:40:00

Technician: John Doe

Survey Measurements

Thermocouple (1-10) and Logger (1-10) Correction Factors applied

Set Point 3 (970.0°C) Tolerance ±10.0°C Survey Time 00:31:20 hh:mm:ss

No overshoot occurred (Maximum 977.4°C)

Time (hh:mm:ss)	#1 (°C)	#2 (°C)	#3 (°C)	#4 (°C)	#5 (°C)	#6 (°C)	#7 (°C)	#8 (°C)	#9 (°C)	#10 (°C)
04:05:40	954.3	953.8	950.3	949.9	944.1	948.4	947.5	940.2	949.0	948.4
04:05:50	954.6	954.1	950.6	950.1	944.4	948.7	947.8	940.5	949.4	948.7
04:06:00	954.9	954.4	950.8	950.4	944.6	948.9	948.0	940.8	949.6	948.9
04:06:10	955.2	954.7	951.1	950.7	945.0	949.3	948.3	941.2	950.0	949.3
04:06:20	955.4	954.9	951.4	951.0	945.2	949.5	948.6	941.4	950.1	949.5
04:06:30	955.6	955.1	951.6	951.2	945.4	949.8	948.8	941.6	950.4	949.8
04:06:40	955.9	955.4	952.0	951.6	945.7	950.0	949.1	941.9	950.7	950.0
04:06:50	956.2	955.7	952.2	951.8	946.0	950.2	949.3	942.2	950.9	950.2
04:07:00	956.5	956.1	952.5	952.1	946.3	950.5	949.7	942.5	951.2	950.5
04:07:10	956.8	956.2	952.7	952.4	946.6	950.8	949.9	942.8	951.5	950.8
04:07:20	957.1	956.7	953.1	952.7	946.9	951.1	950.1	943.1	951.8	951.1
04:07:30	957.3	956.8	953.3	952.9	947.1	951.3	950.4	943.3	952.1	951.3
04:07:40	957.6	957.1	953.6	953.1	947.4	951.6	950.7	943.6	952.3	951.6
04:07:50	957.9	957.3	953.8	953.4	947.7	951.8	950.9	943.9	952.6	951.8
04:08:00	958.2	957.7	954.1	953.7	948.0	952.1	951.1	944.1	952.8	952.1
04:08:10	958.4	957.9	954.4	953.9	948.2	952.3	951.4	944.3	953.0	952.3
04:08:20	958.8	958.2	954.7	954.2	948.6	952.6	951.8	944.7	953.4	952.6
04:08:30	959.0	958.5	955.0	954.5	948.9	952.9	952.1	945.0	953.7	952.9
04:08:40	959.3	958.8	955.3	954.8	949.1	953.1	952.3	945.2	953.9	953.1
04:08:50	959.6	959.1	955.6	955.1	949.4	953.4	952.6	945.5	954.1	953.4
04:09:00	959.9	959.4	955.8	955.3	949.7	953.7	952.9	945.8	954.4	953.7
04:09:10	960.1	959.7	956.0	955.6	949.9	953.9	953.1	946.1	954.8	953.9
04:09:20	960.4	959.9	956.4	955.9	950.2	954.2	953.4	946.3	955.0	954.2
04:09:30	960.7	960.1	956.6	956.1	950.4	954.5	953.7	946.6	955.3	954.5
04:09:40	961.0	960.5	957.0	956.5	950.7	954.7	954.0	946.9	955.5	954.7
04:09:50	961.3	960.8	957.1	956.6	951.0	955.0	954.2	947.2	955.8	955.0
04:10:00	961.6	961.1	957.4	957.0	951.3	955.3	954.5	947.4	956.1	955.3
04:10:10	961.9	961.3	957.8	957.3	951.6	955.6	954.8	947.8	956.4	955.6
04:10:20	962.1	961.6	958.0	957.6	951.8	955.8	955.0	947.9	956.6	955.8
04:10:30	962.4	961.9	958.3	957.8	952.1	956.1	955.3	948.3	956.9	956.1
04:10:40	962.7	962.2	958.7	958.2	952.4	956.4	955.5	948.6	957.3	956.4
04:10:50	963.0	962.5	958.8	958.4	952.7	956.7	955.9	948.9	957.4	956.7
04:11:00	963.3	962.8	959.1	958.8	952.9	957.0	956.2	949.2	957.7	957.0
04:11:10	963.6	963.0	959.5	959.0	953.2	957.3	956.4	949.5	958.0	957.3
04:11:20	963.9	963.3	959.8	959.3	953.5	957.6	956.8	949.7	958.3	957.6
04:11:30	964.0	963.6	960.0	959.5	953.7	957.8	957.0	949.9	958.5	957.8
04:11:40	964.4	963.9	960.3	959.9	954.0	958.1	957.3	950.2	958.8	958.1
04:11:50	964.7	964.0	960.6	960.1	954.3	958.4	957.5	950.4	959.1	958.4
04:12:00	965.0	964.4	960.9	960.4	954.6	958.7	957.8	950.7	959.5	958.7
04:12:10	965.2	964.7	961.1	960.7	954.8	959.0	958.2	951.0	959.7	959.0
04:12:20	965.5	965.0	961.4	961.0	955.1	959.2	958.4	951.3	960.0	959.2
04:12:30	965.7	965.2	961.7	961.3	955.4	959.5	958.7	951.6	960.3	959.5
04:12:40	966.0	965.6	962.0	961.6	955.8	959.8	959.0	951.9	960.6	959.8
04:12:50	966.3	965.8	962.3	961.9	956.0	960.0	959.3	952.1	960.9	960.0
04:13:00	966.6	966.0	962.5	962.2	956.3	960.3	959.5	952.4	961.1	960.3
04:13:10	966.9	966.4	962.9	962.4	956.6	960.6	959.8	952.7	961.4	960.6
04:13:20	967.2	966.6	963.1	962.7	956.9	960.9	960.1	953.0	961.8	960.9
04:13:30	967.4	966.9	963.4	963.0	957.2	961.1	960.4	953.3	962.0	961.1
04:13:40	967.7	967.1	963.7	963.3	957.4	961.4	960.6	953.5	962.3	961.4
04:13:50	967.9	967.5	964.0	963.6	957.8	961.7	960.9	953.8	962.6	961.7
04:14:00	968.2	967.7	964.2	963.8	958.0	961.9	961.2	954.0	962.7	961.9
04:14:10	968.5	968.0	964.5	964.1	958.3	962.3	961.4	954.4	963.1	962.3
04:14:20	968.8	968.3	964.8	964.3	958.5	962.4	961.7	954.6	963.3	962.4
04:14:30	969.0	968.6	965.0	964.6	958.8	962.8	961.9	954.8	963.6	962.8
04:14:40	969.3	968.9	965.3	964.9	959.2	963.0	962.2	955.2	963.8	963.0
04:14:50	969.5	969.0	965.5	965.1	959.4	963.2	962.4	955.4	964.1	963.2
04:15:00	969.8	969.3	965.8	965.4	959.6	963.5	962.7	955.7	964.4	963.5
04:15:10	970.0	969.5	966.0	965.6	959.9	963.7	962.9	955.9	964.6	963.7
04:15:20	970.2	969.8	966.3	965.8	960.2	963.9	963.1	956.2	964.9	963.9
04:15:30	970.4	970.0	966.6	966.1	960.4	964.2	963.3	956.4	965.0	964.2
04:15:40	970.8	970.2	966.7	966.3	960.7	964.3	963.6	956.7	965.4	964.3
04:15:50	970.9	970.4	966.9	966.5	960.9	964.5	963.7	956.9	965.5	964.5
04:16:00	971.2	970.7	967.2	966.7	961.2	964.7	963.9	957.1	965.8	964.7
04:16:10	971.4	970.9	967.4	967.0	961.4	965.0	964.1	957.4	966.0	965.0
04:16:20	971.6	971.1	967.7	967.3	961.7	965.2	964.4	957.6	966.2	965.2
04:16:30	971.8	971.3	967.9	967.5	961.9	965.4	964.6	957.8	966.5	965.4
04:16:40	972.0	971.5	968.1	967.7	962.2	965.5	964.7	958.1	966.7	965.5
04:16:50	972.2	971.7	968.3	967.9	962.4	965.6	964.9	958.2	966.8	965.6
04:17:00	972.3	971.8	968.5	968.1	962.6	965.9	965.1	958.4	967.0	965.9
04:17:10	972.5	972.1	968.7	968.3	962.8	966.1	965.2	958.7	967.2	966.1
04:17:20	972.8	972.3	969.0	968.6	963.1	966.3	965.4	958.8	967.4	966.3
04:17:30	972.9	972.5	969.1	968.8	963.3	966.5	965.6	959.1	967.6	966.5
04:17:40	973.1	972.7	969.4	968.9	963.5	966.6	965.8	959.3	967.8	966.6
04:17:50	973.3	972.9	969.6	969.2	963.7	966.8	965.9	959.5	968.0	966.8
04:18:00	973.4	973.0	969.7	969.3	963.9	967.0	966.1	959.7	968.2	967.0
04:18:10	973.6	973.2	969.9	969.6	964.1	967.1	966.2	959.8	968.3	967.1
04:18:20	973.7	973.3	970.0	969.7	964.3	967.2	966.4	960.0	968.5	967.2
04:18:30	973.9	973.5	970.2	969.9	964.5	967.4	966.5	960.2	968.7	967.4
04:18:40	974.1	973.6	970.4	970.1	964.7	967.5	966.6	960.4	968.8	967.5
04:18:50	974.2	973.8	970.5	970.2	964.9	967.7	966.8	960.6	969.0	967.7
04:19:00	974.3	973.8	970.7	970.3	965.1	967.7	966.8	960.7	969.0	967.7
04:19:10	974.4	974.0	970.9	970.5	965.2	967.9	966.9	960.9	969.3	967.9
04:19:20	974.6	974.2	971.0	970.7	965.4	968.0	967.1	961.0	969.4	968.0
04:19:30	974.7	974.3	971.2	970.9	965.6	968.2	967.2	961.2	969.5	968.2
04:19:40	974.8	974.3	971.3	971.0	965.8	968.2	967.4	961.3	969.6	968.2
04:19:50	974.9	974.5	971.5	971.1	966.0	968.4	967.5	961.5	969.8	968.4
04:20:00	975.0	974.6	971.6	971.3	966.1	968.4	967.5	961.6	970.0	968.4
04:20:10	975.1	974.7	971.8	971.4	966.2	968.6	967.6	961.7	970.0	968.6
04:20:20	975.2	974.8	971.9	971.6	966.4	968.7	967.7	961.9	970.1	968.7
04:20:30	975.3	974.9	972.0	971.7	966.7	968.8	967.8	962.1	970.3	968.8



Furnace ID: Furnace 1

Survey Start Date: 24-9-06

Survey Start Time: 08:40:00

Technician: John Doe

Survey Measurements

Thermocouple (1-10) and Logger (1-10) Correction Factors applied

Set Point 3 (970.0°C) Tolerance ±10.0°C Survey Time 00:31:20 hh:mm:ss

No overshoot occurred (Maximum 977.4°C)

Time (hh:mm:ss)	#1 (°C)	#2 (°C)	#3 (°C)	#4 (°C)	#5 (°C)	#6 (°C)	#7 (°C)	#8 (°C)	#9 (°C)	#10 (°C)
04:20:40	975.4	975.0	972.2	971.8	966.7	968.8	967.9	962.2	970.3	968.8
04:20:50	975.5	975.1	972.3	972.0	966.9	968.9	968.0	962.4	970.5	968.9
04:21:00	975.6	975.2	972.4	972.2	967.1	969.1	968.2	962.5	970.6	969.1
04:21:10	975.6	975.3	972.5	972.2	967.3	969.1	968.1	962.6	970.7	969.1
04:21:20	975.7	975.4	972.6	972.3	967.4	969.2	968.2	962.7	970.8	969.2
04:21:30	975.7	975.4	972.7	972.4	967.5	969.2	968.2	962.8	970.9	969.2
04:21:40	975.9	975.4	972.8	972.5	967.6	969.3	968.3	962.9	971.0	969.3
04:21:50	975.8	975.5	972.9	972.6	967.7	969.4	968.4	962.9	971.0	969.4
04:22:00	976.0	975.6	973.1	972.8	967.9	969.4	968.5	963.1	971.2	969.4
04:22:10	976.0	975.6	973.1	972.8	968.0	969.5	968.5	963.2	971.3	969.5
04:22:20	976.1	975.7	973.2	972.9	968.1	969.5	968.5	963.3	971.3	969.5
04:22:30	976.1	975.8	973.3	973.0	968.2	969.6	968.6	963.4	971.4	969.6
04:22:40	976.1	975.8	973.4	973.1	968.4	969.6	968.7	963.5	971.5	969.6
04:22:50	976.2	975.8	973.5	973.2	968.5	969.6	968.8	963.5	971.5	969.6
04:23:00	976.3	975.9	973.6	973.3	968.6	969.7	968.8	963.6	971.7	969.7
04:23:10	976.3	975.9	973.6	973.3	968.7	969.7	968.8	963.7	971.7	969.7
04:23:20	976.3	976.0	973.7	973.4	968.8	969.8	968.8	963.8	971.7	969.8
04:23:30	976.3	976.0	973.8	973.5	968.9	969.7	968.8	963.9	971.7	969.7
04:23:40	976.4	976.0	973.8	973.6	969.0	969.8	968.9	963.9	971.8	969.8
04:23:50	976.4	976.0	973.9	973.6	969.0	969.8	968.9	964.0	971.8	969.8
04:24:00	976.4	976.1	974.0	973.6	969.2	969.9	969.0	964.1	971.9	969.9
04:24:10	976.5	976.1	974.0	973.8	969.3	969.9	969.0	964.1	971.9	969.9
04:24:20	976.5	976.1	974.1	973.9	969.4	970.0	969.0	964.2	972.0	970.0
04:24:30	976.5	976.2	974.1	973.9	969.5	970.0	969.0	964.3	972.0	970.0
04:24:40	976.5	976.2	974.2	974.0	969.6	970.0	969.1	964.4	972.1	970.0
04:24:50	976.5	976.2	974.3	974.0	969.6	970.0	969.1	964.4	972.2	970.0
04:25:00	976.6	976.2	974.3	974.0	969.7	970.0	969.1	964.4	972.2	970.0
04:25:10	976.6	976.2	974.3	974.1	969.7	970.1	969.1	964.5	972.2	970.1
04:25:20	976.6	976.2	974.4	974.1	969.9	970.1	969.2	964.6	972.2	970.1
04:25:30	976.6	976.2	974.4	974.1	970.0	970.1	969.1	964.6	972.3	970.1
04:25:40	976.6	976.3	974.5	974.2	970.1	970.1	969.2	964.7	972.4	970.1
04:25:50	976.6	976.3	974.5	974.2	970.1	970.1	969.2	964.7	972.3	970.1
04:26:00	976.6	976.2	974.5	974.2	970.1	970.1	969.1	964.7	972.4	970.1
04:26:10	976.5	976.2	974.5	974.3	970.2	970.1	969.1	964.7	972.3	970.1
04:26:20	976.6	976.4	974.6	974.4	970.4	970.1	969.2	964.9	972.5	970.1
04:26:30	976.6	976.2	974.6	974.4	970.3	970.1	969.2	964.9	972.4	970.1
04:26:40	976.7	976.4	974.7	974.4	970.4	970.1	969.2	964.9	972.6	970.1
04:26:50	976.6	976.2	974.7	974.5	970.5	970.1	969.2	964.9	972.6	970.1
04:27:00	976.7	976.3	974.7	974.5	970.6	970.2	969.2	965.0	972.6	970.2
04:27:10	976.6	976.3	974.7	974.5	970.6	970.1	969.2	965.0	972.5	970.1
04:27:20	976.5	976.3	974.7	974.5	970.7	970.1	969.1	965.0	972.6	970.1
04:27:30	976.6	976.2	974.7	974.5	970.7	970.1	969.1	965.0	972.6	970.1
04:27:40	976.6	976.2	974.9	974.6	970.8	970.1	969.2	965.1	972.6	970.1
04:27:50	976.5	976.2	974.8	974.6	970.8	970.1	969.2	965.1	972.6	970.1
04:28:00	976.6	976.2	974.8	974.7	970.9	970.2	969.3	965.2	972.7	970.2
04:28:10	976.6	976.2	974.8	974.6	970.8	970.1	969.2	965.2	972.7	970.1
04:28:20	976.6	976.2	974.9	974.7	970.9	970.1	969.2	965.2	972.7	970.1
04:28:30	976.5	976.2	974.9	974.7	971.0	970.1	969.2	965.3	972.7	970.1
04:28:40	976.6	976.2	974.9	974.7	971.0	970.1	969.2	965.3	972.7	970.1
04:28:50	976.5	976.2	974.9	974.6	971.1	970.0	969.2	965.3	972.6	970.0
04:29:00	976.5	976.3	975.0	974.7	971.1	970.1	969.2	965.4	972.7	970.1
04:29:10	976.5	976.1	974.9	974.7	971.2	970.0	969.2	965.3	972.7	970.0
04:29:20	976.5	976.2	975.0	974.8	971.2	970.0	969.2	965.4	972.8	970.0
04:29:30	976.5	976.2	974.9	974.7	971.2	970.0	969.2	965.4	972.7	970.0
04:29:40	976.5	976.1	975.1	974.8	971.2	970.1	969.2	965.5	972.8	970.1
04:29:50	976.4	976.1	975.1	974.8	971.4	970.0	969.2	965.5	972.8	970.0
04:30:00	976.5	976.2	975.1	974.8	971.3	970.0	969.2	965.5	972.8	970.0
04:30:10	976.4	976.1	974.9	974.7	971.3	970.0	969.1	965.4	972.8	970.0
04:30:20	976.4	976.1	975.0	974.8	971.4	970.0	969.1	965.5	972.8	970.0
04:30:30	976.4	976.0	975.0	974.8	971.4	970.0	969.1	965.5	972.8	970.0
04:30:40	976.5	976.1	975.0	974.8	971.5	970.0	969.1	965.6	972.8	970.0
04:30:50	976.4	976.1	975.1	974.8	971.5	969.9	969.2	965.6	972.9	969.9
04:31:00	976.4	976.0	975.1	974.9	971.5	970.0	969.2	965.6	972.8	970.0
04:31:10	976.3	976.0	975.0	974.8	971.5	970.0	969.1	965.6	972.9	970.0
04:31:20	976.4	976.1	975.1	974.9	971.6	970.0	969.2	965.6	972.9	970.0
04:31:30	976.3	976.0	975.1	974.9	971.6	969.9	969.2	965.6	972.9	969.9
04:31:40	976.3	976.0	975.0	974.9	971.6	969.9	969.1	965.6	972.8	969.9
04:31:50	976.3	976.0	975.1	974.9	971.6	969.9	969.1	965.6	972.9	969.9
04:32:00	976.3	976.0	975.1	974.9	971.7	969.9	969.2	965.7	972.9	969.9
04:32:10	976.3	976.0	975.2	974.9	971.7	969.9	969.2	965.7	972.9	969.9
04:32:20	976.3	976.0	975.1	974.9	971.7	969.9	969.2	965.7	972.9	969.9
04:32:30	976.3	976.0	975.1	975.0	971.7	969.9	969.2	965.8	972.9	969.9
04:32:40	976.3	976.0	975.1	974.9	971.8	969.9	969.2	965.8	973.0	969.9
04:32:50	976.3	976.0	975.2	974.9	971.8	969.9	969.2	965.8	973.0	969.9
04:33:00	976.3	976.0	975.2	974.9	971.9	970.0	969.2	965.8	973.0	970.0
04:33:10	976.3	976.0	975.2	975.0	972.0	970.0	969.2	965.9	973.0	970.0
04:33:20	976.4	976.0	975.2	975.0	971.9	970.0	969.3	965.9	973.0	970.0
04:33:30	976.3	976.0	975.2	975.0	971.9	970.0	969.2	965.9	973.0	970.0
04:33:40	976.4	976.0	975.3	975.1	972.0	970.0	969.2	965.9	973.0	970.0
04:33:50	976.4	976.0	975.3	975.1	972.0	970.0	969.3	966.0	973.0	970.0
04:34:00	976.4	976.0	975.2	975.0	972.0	969.9	969.2	965.9	972.9	969.9
04:34:10	976.4	976.1	975.3	975.1	972.1	970.0	969.3	966.0	973.1	970.0
04:34:20	976.4	976.1	975.3	975.1	972.1	970.0	969.3	966.0	973.1	970.0
04:34:30	976.4	976.1	975.3	975.1	972.1	970.0	969.4	966.1	973.1	970.0
04:34:40	976.4	976.0	975.3	975.1	972.1	970.0	969.3	966.0	973.1	970.0
04:34:50	976.3	976.0	975.3	975.1	972.1	970.0	969.3	966.0	973.1	970.0
04:35:00	976.4	976.0	975.3	975.1	972.1	970.0	969.4	966.1	973.0	970.0
04:35:10	976.4	976.1	975.4	975.1	972.2	970.1	969.4	966.0	973.1	970.1
04:35:20	976.4	976.0	975.3	975.2	972.2	970.0	969.4	966.1	973.1	970.0
04:35:30	976.4	976.1	975.4	975.2	972.3	970.1	969.4	966.1	973.2	970.1



Furnace ID: Furnace 1

Survey Start Date: 24-9-06

Survey Start Time: 08:40:00

Technician: John Doe

Survey Measurements

Thermocouple (1-10) and Logger (1-10) Correction Factors applied

Set Point 3 (970.0°C) Tolerance ±10.0°C Survey Time 00:31:20 hh:mm:ss

No overshoot occurred (Maximum 977.4°C)

Time (hh:mm:ss)	#1 (°C)	#2 (°C)	#3 (°C)	#4 (°C)	#5 (°C)	#6 (°C)	#7 (°C)	#8 (°C)	#9 (°C)	#10 (°C)
04:35:40	976.4	976.1	975.4	975.2	972.2	970.1	969.4	966.2	973.2	970.1
04:35:50	976.4	976.0	975.4	975.2	972.3	970.1	969.4	966.1	973.2	970.1
04:36:00	976.4	976.1	975.4	975.2	972.3	970.1	969.4	966.2	973.3	970.1
04:36:10	976.5	976.1	975.5	975.2	972.4	970.1	969.4	966.2	973.2	970.1
04:36:20	976.5	976.1	975.4	975.2	972.3	970.1	969.4	966.2	973.2	970.1
04:36:30	976.4	976.1	975.4	975.2	972.4	970.2	969.5	966.3	973.3	970.2
04:36:40	976.5	976.1	975.5	975.3	972.4	970.2	969.4	966.3	973.2	970.2
04:36:50	976.5	976.1	975.5	975.3	972.5	970.2	969.5	966.3	973.3	970.2
04:37:00	976.5	976.2	975.5	975.3	972.5	970.2	969.5	966.3	973.3	970.2
04:37:10	976.5	976.2	975.5	975.3	972.5	970.2	969.5	966.4	973.3	970.2
04:37:20	976.5	976.2	975.6	975.4	972.5	970.3	969.6	966.4	973.4	970.3
04:37:30	976.5	976.1	975.6	975.3	972.5	970.2	969.5	966.4	973.3	970.2
04:37:40	976.6	976.2	975.6	975.4	972.6	970.2	969.6	966.4	973.3	970.2
04:37:50	976.6	976.2	975.6	975.4	972.6	970.2	969.5	966.4	973.3	970.2
04:38:00	976.5	976.2	975.6	975.4	972.6	970.3	969.5	966.4	973.3	970.3
04:38:10	976.6	976.2	975.7	975.4	972.6	970.3	969.6	966.5	973.4	970.3
04:38:20	976.5	976.2	975.6	975.4	972.7	970.3	969.6	966.5	973.4	970.3
04:38:30	976.6	976.3	975.7	975.5	972.7	970.3	969.6	966.6	973.4	970.3
04:38:40	976.6	976.2	975.7	975.5	972.7	970.3	969.6	966.5	973.5	970.3
04:38:50	976.6	976.2	975.6	975.5	972.7	970.3	969.6	966.5	973.4	970.3
04:39:00	976.6	976.2	975.7	975.5	972.7	970.3	969.6	966.6	973.4	970.3
04:39:10	976.6	976.2	975.8	975.5	972.8	970.3	969.7	966.6	973.5	970.3
04:39:20	976.6	976.2	975.7	975.5	972.8	970.3	969.6	966.6	973.4	970.3
04:39:30	976.6	976.3	975.8	975.6	972.9	970.3	969.7	966.7	973.5	970.3
04:39:40	976.6	976.2	975.8	975.5	972.8	970.3	969.7	966.6	973.5	970.3
04:39:50	976.6	976.2	975.7	975.5	972.8	970.3	969.7	966.7	973.4	970.3
04:40:00	976.6	976.3	975.8	975.5	972.9	970.3	969.7	966.7	973.5	970.3
04:40:10	976.6	976.3	975.8	975.6	972.9	970.4	969.8	966.7	973.5	970.4
04:40:20	976.6	976.3	975.8	975.6	972.9	970.3	969.7	966.7	973.5	970.3
04:40:30	976.6	976.3	975.8	975.5	972.9	970.3	969.7	966.7	973.5	970.3
04:40:40	976.7	976.3	975.9	975.6	973.0	970.4	969.8	966.8	973.6	970.4
04:40:50	976.6	976.3	975.9	975.6	972.9	970.4	969.7	966.8	973.6	970.4
04:41:00	976.6	976.3	975.9	975.6	972.9	970.4	969.7	966.8	973.6	970.4
04:41:10	976.7	976.3	975.9	975.6	973.1	970.4	969.8	966.9	973.6	970.4
04:41:20	976.7	976.3	975.8	975.6	973.0	970.4	969.7	966.9	973.6	970.4
04:41:30	976.7	976.3	975.9	975.6	973.1	970.4	969.8	966.9	973.7	970.4
04:41:40	976.7	976.3	975.9	975.7	973.1	970.4	969.7	966.9	973.7	970.4
04:41:50	976.7	976.4	975.9	975.6	973.1	970.4	969.8	966.9	973.7	970.4
04:42:00	976.6	976.2	975.9	975.6	973.1	970.4	969.7	966.8	973.6	970.4
04:42:10	976.7	976.4	975.9	975.7	973.2	970.4	969.8	966.9	973.7	970.4
04:42:20	976.6	976.3	975.9	975.7	973.2	970.4	969.8	966.9	973.7	970.4
04:42:30	976.7	976.3	976.0	975.7	973.2	970.5	969.8	967.0	973.7	970.5
04:42:40	976.7	976.3	976.0	975.7	973.2	970.4	969.8	967.0	973.7	970.4
04:42:50	976.7	976.3	975.9	975.7	973.2	970.4	969.8	966.9	973.6	970.4
04:43:00	976.7	976.4	975.9	975.8	973.2	970.5	969.8	967.1	973.7	970.5
04:43:10	976.7	976.4	976.0	975.7	973.3	970.5	969.9	967.0	973.7	970.5
04:43:20	976.7	976.4	975.9	975.7	973.3	970.5	969.8	967.0	973.7	970.5
04:43:30	976.6	976.3	976.0	975.7	973.2	970.4	969.8	967.0	973.7	970.4
04:43:40	976.7	976.3	976.0	975.8	973.3	970.4	969.8	967.0	973.7	970.4
04:43:50	976.6	976.3	975.9	975.7	973.2	970.4	969.8	967.0	973.8	970.4
04:44:00	976.6	976.4	976.0	975.8	973.3	970.4	969.8	967.1	973.8	970.4
04:44:10	976.6	976.4	976.0	975.8	973.3	970.4	969.8	967.1	973.8	970.4
04:44:20	976.7	976.4	976.0	975.8	973.4	970.5	969.9	967.1	973.8	970.5
04:44:30	976.7	976.3	976.0	975.9	973.4	970.4	969.9	967.2	973.8	970.4
04:44:40	976.6	976.3	976.0	975.8	973.4	970.5	969.8	967.1	973.7	970.5
04:44:50	976.7	976.4	976.0	975.8	973.3	970.5	969.9	967.1	973.7	970.5
04:45:00	976.6	976.3	976.0	975.8	973.4	970.5	969.8	967.2	973.8	970.5
04:45:10	976.6	976.3	975.9	975.8	973.4	970.5	969.8	967.1	973.8	970.5
04:45:20	976.6	976.3	976.0	975.8	973.4	970.4	969.8	967.2	973.8	970.4
04:45:30	976.6	976.3	976.0	975.8	973.4	970.5	969.8	967.1	973.8	970.5
04:45:40	976.6	976.3	976.0	975.8	973.4	970.4	969.9	967.2	973.8	970.4
04:45:50	976.6	976.3	976.1	975.9	973.4	970.5	969.8	967.2	973.8	970.5
04:46:00	976.6	976.3	976.0	975.8	973.4	970.5	969.9	967.2	973.8	970.5
04:46:10	976.7	976.3	976.0	975.9	973.5	970.5	969.9	967.2	973.9	970.5
04:46:20	976.6	976.3	976.0	975.8	973.5	970.5	969.9	967.2	973.8	970.5
04:46:30	976.6	976.3	976.1	975.8	973.4	970.5	969.9	967.2	973.8	970.5
04:46:40	976.6	976.3	976.1	975.8	973.5	970.4	969.8	967.2	973.8	970.4
04:46:50	976.6	976.3	975.9	975.8	973.4	970.4	969.8	967.2	973.8	970.4
04:47:00	976.7	976.4	976.1	975.9	973.5	970.4	969.9	967.3	973.9	970.4
04:47:10	976.6	976.3	976.0	975.8	973.4	970.4	969.9	967.2	973.8	970.4
04:47:20	976.7	976.4	976.1	975.9	973.6	970.5	970.0	967.4	973.9	970.5
04:47:30	976.6	976.4	976.1	975.9	973.5	970.5	969.9	967.3	973.9	970.5
04:47:40	976.7	976.4	976.1	975.9	973.5	970.5	969.9	967.4	973.9	970.5
04:47:50	976.6	976.3	976.1	975.9	973.5	970.5	970.0	967.4	973.9	970.5
04:48:00	976.6	976.3	976.1	975.8	973.6	970.5	969.9	967.3	973.9	970.5
04:48:10	976.7	976.3	976.2	975.9	973.6	970.5	970.0	967.4	973.9	970.5
04:48:20	976.6	976.4	976.1	975.9	973.5	970.5	970.0	967.4	973.9	970.5
04:48:30	976.8	976.4	976.1	975.9	973.6	970.6	970.0	967.4	973.9	970.6
04:48:40	976.7	976.4	976.2	975.9	973.7	970.6	970.0	967.4	974.0	970.6
04:48:50	976.7	976.4	976.2	975.9	973.6	970.5	969.9	967.4	974.0	970.5
04:49:00	976.7	976.4	976.1	976.0	973.7	970.5	970.0	967.4	974.0	970.5
04:49:10	976.7	976.4	976.1	976.0	973.7	970.6	970.0	967.5	974.0	970.6
04:49:20	976.7	976.4	976.1	975.9	973.6	970.6	970.0	967.4	973.9	970.6
04:49:30	976.7	976.4	976.1	975.9	973.7	970.6	970.0	967.5	974.0	970.6
04:49:40	976.6	976.3	976.1	975.9	973.6	970.5	969.9	967.4	973.9	970.5
04:49:50	976.7	976.4	976.1	976.0	973.7	970.5	970.0	967.5	974.0	970.5
04:50:00	976.7	976.4	976.2	976.0	973.7	970.6	970.0	967.5	973.9	970.6
04:50:10	976.6	976.4	976.1	975.9	973.6	970.5	969.9	967.4	974.0	970.5
04:50:20	976.7	976.4	976.2	976.0	973.8	970.6	970.0	967.6	974.0	970.6
04:50:30	976.7	976.4	976.2	976.0	973.8	970.6	970.0	967.5	974.0	970.6



Furnace ID: Furnace 1

Survey Start Date: 24-9-06

Survey Start Time: 08:40:00

Technician: John Doe

Survey Measurements

Thermocouple (1-10) and Logger (1-10) Correction Factors applied

Set Point 3 (970.0°C) Tolerance ±10.0°C Survey Time 00:31:20 hh:mm:ss

No overshoot occurred (Maximum 977.4°C)

Time (hh:mm:ss)	#1 (°C)	#2 (°C)	#3 (°C)	#4 (°C)	#5 (°C)	#6 (°C)	#7 (°C)	#8 (°C)	#9 (°C)	#10 (°C)
04:50:40	976.7	976.4	976.2	976.0	973.7	970.6	970.0	967.5	974.0	970.6
04:50:50	976.7	976.4	976.2	975.9	973.8	970.6	970.0	967.5	974.0	970.6
04:51:00	976.7	976.4	976.1	975.9	973.8	970.6	970.0	967.5	974.0	970.6
04:51:10	976.7	976.4	976.2	976.0	973.8	970.6	970.0	967.6	974.0	970.6
04:51:20	976.7	976.4	976.2	975.9	973.8	970.6	970.0	967.5	974.0	970.6
04:51:30	976.7	976.3	976.2	976.0	973.8	970.5	970.0	967.5	974.0	970.5
04:51:40	976.7	976.4	976.1	976.0	973.8	970.7	970.0	967.6	974.0	970.7
04:51:50	976.6	976.4	976.2	975.9	973.8	970.6	970.0	967.5	974.0	970.6
04:52:00	976.7	976.4	976.2	976.0	973.8	970.7	970.1	967.6	974.0	970.7
04:52:10	976.7	976.4	976.2	976.0	973.8	970.6	970.0	967.7	974.0	970.6
04:52:20	976.7	976.4	976.2	976.0	973.8	970.6	970.0	967.6	974.0	970.6
04:52:30	976.7	976.4	976.2	976.0	973.9	970.6	970.0	967.6	974.0	970.6
04:52:40	976.7	976.4	976.2	976.0	973.8	970.6	970.1	967.6	974.0	970.6
04:52:50	976.7	976.4	976.2	976.0	973.9	970.6	970.1	967.7	974.0	970.6
04:53:00	976.7	976.4	976.2	976.0	973.8	970.6	970.0	967.6	974.0	970.6
04:53:10	976.7	976.4	976.2	976.0	973.8	970.6	970.1	967.6	974.0	970.6
04:53:20	976.7	976.4	976.2	976.0	973.9	970.7	970.1	967.7	974.0	970.7
04:53:30	976.7	976.4	976.2	976.0	973.9	970.7	970.0	967.6	974.1	970.7
04:53:40	976.7	976.4	976.2	976.0	973.8	970.7	970.0	967.6	974.0	970.7
04:53:50	976.7	976.5	976.3	976.1	974.0	970.7	970.2	967.7	974.1	970.7
04:54:00	976.7	976.4	976.2	976.0	973.9	970.7	970.1	967.7	974.1	970.7
04:54:10	976.7	976.4	976.2	976.0	973.9	970.7	970.1	967.7	974.0	970.7
04:54:20	976.7	976.5	976.3	976.0	974.0	970.7	970.1	967.7	974.1	970.7
04:54:30	976.7	976.4	976.2	976.0	973.9	970.7	970.1	967.7	974.1	970.7
04:54:40	976.7	976.4	976.2	976.1	973.9	970.7	970.1	967.7	974.0	970.7
04:54:50	976.7	976.4	976.2	976.1	973.9	970.7	970.1	967.7	974.1	970.7
04:55:00	976.7	976.3	976.2	976.0	973.9	970.6	970.0	967.7	974.0	970.6
04:55:10	976.7	976.4	976.2	976.0	973.9	970.6	970.0	967.7	974.0	970.6
04:55:20	976.7	976.4	976.2	976.1	973.9	970.7	970.1	967.7	974.1	970.7
04:55:30	976.6	976.4	976.2	976.0	973.9	970.7	970.1	967.7	974.0	970.7
04:55:40	976.7	976.3	976.2	976.0	973.9	970.7	970.0	967.7	974.0	970.7
04:55:50	976.7	976.4	976.3	976.1	974.0	970.7	970.1	967.7	974.1	970.7
04:56:00	976.7	976.4	976.3	976.1	974.0	970.7	970.1	967.8	974.1	970.7
04:56:10	976.7	976.4	976.3	976.1	974.0	970.7	970.1	967.7	974.1	970.7
04:56:20	976.7	976.4	976.3	976.1	974.0	970.7	970.2	967.8	974.1	970.7
04:56:30	976.7	976.4	976.3	976.1	974.0	970.6	970.1	967.8	974.1	970.6
04:56:40	976.6	976.3	976.2	976.1	973.9	970.7	970.2	967.7	974.1	970.7
04:56:50	976.8	976.4	976.4	976.1	974.0	970.8	970.2	967.9	974.2	970.8
04:57:00	976.7	976.3	976.2	976.1	974.0	970.7	970.1	967.8	974.1	970.7
04:57:10	976.7	976.4	976.3	976.1	974.0	970.8	970.2	967.8	974.1	970.8
04:57:20	976.7	976.4	976.3	976.1	974.0	970.7	970.2	967.9	974.1	970.7
04:57:30	976.7	976.5	976.3	976.1	974.0	970.7	970.2	967.9	974.1	970.7
04:57:40	976.7	976.4	976.3	976.1	974.0	970.8	970.2	967.9	974.1	970.8
04:57:50	976.8	976.5	976.3	976.1	974.1	970.8	970.2	967.9	974.2	970.8
04:58:00	976.8	976.4	976.4	976.1	974.0	970.8	970.3	967.9	974.2	970.8
04:58:10	976.8	976.4	976.4	976.1	974.1	970.8	970.3	967.9	974.2	970.8
04:58:20	976.8	976.5	976.4	976.2	974.1	970.8	970.3	967.9	974.2	970.8
04:58:30	976.8	976.5	976.4	976.1	974.1	970.8	970.2	967.9	974.2	970.8
04:58:40	976.8	976.4	976.4	976.1	974.1	970.8	970.2	967.9	974.2	970.8
04:58:50	976.8	976.5	976.4	976.2	974.1	970.9	970.3	968.1	974.2	970.9
04:59:00	976.9	976.5	976.4	976.2	974.2	970.9	970.3	967.9	974.3	970.9
04:59:10	976.8	976.5	976.4	976.2	974.1	970.9	970.3	968.0	974.2	970.9
04:59:20	976.9	976.5	976.5	976.3	974.2	970.9	970.4	968.0	974.3	970.9
04:59:30	976.8	976.5	976.5	976.2	974.1	970.9	970.4	968.0	974.2	970.9
04:59:40	976.9	976.5	976.4	976.2	974.2	970.9	970.3	968.1	974.3	970.9
04:59:50	976.9	976.5	976.4	976.2	974.2	970.9	970.4	968.1	974.3	970.9
05:00:00	976.9	976.6	976.5	976.2	974.2	970.9	970.4	968.1	974.4	970.9
05:00:10	976.8	976.6	976.4	976.2	974.2	970.9	970.3	968.1	974.3	970.9
05:00:20	976.9	976.5	976.4	976.2	974.2	970.9	970.4	968.1	974.3	970.9
05:00:30	976.9	976.5	976.5	976.2	974.2	971.0	970.4	968.1	974.3	971.0
05:00:40	976.9	976.6	976.5	976.3	974.2	970.9	970.4	968.1	974.3	970.9
05:00:50	976.9	976.6	976.4	976.2	974.2	970.9	970.4	968.1	974.3	970.9
05:01:00	976.9	976.7	976.5	976.3	974.3	971.0	970.4	968.1	974.4	971.0
05:01:10	976.9	976.6	976.5	976.3	974.3	971.0	970.4	968.1	974.3	971.0
05:01:20	976.9	976.6	976.5	976.3	974.3	971.0	970.4	968.1	974.3	971.0
05:01:30	977.0	976.6	976.6	976.3	974.3	971.0	970.5	968.2	974.4	971.0
05:01:40	977.0	976.6	976.5	976.3	974.3	971.0	970.4	968.2	974.4	971.0
05:01:50	976.9	976.7	976.6	976.3	974.4	971.0	970.4	968.2	974.4	971.0
05:02:00	977.0	976.6	976.6	976.3	974.3	971.0	970.5	968.2	974.5	971.0
05:02:10	977.0	976.7	976.7	976.4	974.4	971.1	970.5	968.3	974.5	971.1
05:02:20	977.0	976.7	976.6	976.4	974.4	971.1	970.5	968.3	974.5	971.1
05:02:30	977.0	976.6	976.6	976.3	974.4	971.0	970.4	968.2	974.5	971.0
05:02:40	977.0	976.7	976.6	976.3	974.3	971.0	970.5	968.2	974.5	971.0
05:02:50	977.0	976.6	976.6	976.3	974.3	971.0	970.5	968.3	974.6	971.0
05:03:00	977.0	976.7	976.5	976.3	974.3	971.0	970.5	968.2	974.5	971.0
05:03:10	976.9	976.6	976.6	976.3	974.4	971.0	970.5	968.2	974.5	971.0
05:03:20	977.0	976.6	976.6	976.4	974.4	971.1	970.5	968.3	974.6	971.1
05:03:30	977.0	976.7	976.6	976.4	974.4	971.1	970.5	968.3	974.6	971.1
05:03:40	976.9	976.6	976.6	976.4	974.3	971.1	970.5	968.3	974.6	971.1
05:03:50	976.9	976.7	976.6	976.3	974.4	971.1	970.4	968.3	974.5	971.1
05:04:00	977.0	976.7	976.6	976.5	974.5	971.1	970.5	968.3	974.6	971.1
05:04:10	977.0	976.7	976.6	976.3	974.3	971.1	970.5	968.3	974.6	971.1
05:04:20	977.0	976.7	976.6	976.4	974.5	971.1	970.5	968.3	974.5	971.1
05:04:30	977.0	976.7	976.6	976.4	974.4	971.1	970.5	968.3	974.6	971.1
05:04:40	977.0	976.7	976.6	976.5	974.5	971.1	970.5	968.3	974.6	971.1
05:04:50	977.0	976.7	976.6	976.5	974.5	971.1	970.5	968.4	974.6	971.1
05:05:00	977.0	976.7	976.7	976.5	974.5	971.1	970.6	968.4	974.6	971.1
05:05:10	977.1	976.7	976.7	976.5	974.5	971.2	970.6	968.4	974.6	971.2
05:05:20	977.0	976.7	976.6	976.4	974.4	971.1	970.7	968.4	974.6	971.1
05:05:30	977.0	976.7	976.6	976.5	974.5	971.1	970.6	968.4	974.6	971.1



Furnace ID: Furnace 1

Survey Start Date: 24-9-06

Survey Start Time: 08:40:00

Technician: John Doe

Survey Measurements

Thermocouple (1-10) and Logger (1-10) Correction Factors applied

Set Point 3 (970.0°C) Tolerance ±10.0°C Survey Time 00:31:20 hh:mm:ss**No overshoot occurred (Maximum 977.4°C)**

Time (hh:mm:ss)	#1 (°C)	#2 (°C)	#3 (°C)	#4 (°C)	#5 (°C)	#6 (°C)	#7 (°C)	#8 (°C)	#9 (°C)	#10 (°C)
05:05:40	977.0	976.7	976.6	976.5	974.5	971.1	970.6	968.3	974.6	971.1
05:05:50	977.1	976.8	976.6	976.5	974.5	971.2	970.6	968.4	974.6	971.2
05:06:00	977.0	976.7	976.7	976.5	974.5	971.1	970.7	968.4	974.6	971.1
05:06:10	977.0	976.7	976.7	976.5	974.5	971.1	970.6	968.4	974.6	971.1
05:06:20	977.1	976.7	976.7	976.5	974.5	971.1	970.7	968.4	974.6	971.1
05:06:30	977.1	976.7	976.7	976.5	974.6	971.3	970.7	968.5	974.7	971.3
05:06:40	977.1	976.8	976.8	976.5	974.6	971.2	970.7	968.5	974.6	971.2
05:06:50	977.1	976.7	976.7	976.5	974.6	971.1	970.7	968.5	974.7	971.1
05:07:00	977.0	976.7	976.7	976.5	974.6	971.1	970.7	968.4	974.7	971.1
05:07:10	977.0	976.7	976.7	976.5	974.5	971.2	970.6	968.4	974.6	971.2
05:07:20	977.1	976.8	976.7	976.5	974.6	971.2	970.8	968.5	974.7	971.2
05:07:30	977.1	976.8	976.7	976.5	974.6	971.2	970.7	968.5	974.7	971.2
05:07:40	977.1	976.8	976.7	976.6	974.6	971.2	970.7	968.5	974.7	971.2
05:07:50	977.1	976.7	976.8	976.6	974.6	971.2	970.7	968.5	974.7	971.2
05:08:00	977.1	976.8	976.7	976.5	974.6	971.2	970.7	968.6	974.7	971.2
05:08:10	977.0	976.7	976.7	976.5	974.6	971.2	970.7	968.5	974.6	971.2
05:08:20	977.0	976.7	976.7	976.6	974.6	971.2	970.6	968.5	974.6	971.2
05:08:30	977.0	976.7	976.7	976.6	974.6	971.2	970.6	968.5	974.6	971.2
05:08:40	977.0	976.7	976.7	976.5	974.6	971.3	970.7	968.6	974.7	971.3
05:08:50	977.1	976.7	976.8	976.6	974.6	971.3	970.7	968.5	974.7	971.3
05:09:00	977.1	976.7	976.7	976.5	974.6	971.2	970.7	968.5	974.6	971.2
05:09:10	977.0	976.7	976.7	976.5	974.6	971.2	970.7	968.5	974.7	971.2
05:09:20	977.1	976.7	976.7	976.5	974.7	971.2	970.7	968.5	974.7	971.2
05:09:30	977.2	976.8	976.8	976.6	974.7	971.3	970.8	968.6	974.7	971.3
05:09:40	977.0	976.7	976.7	976.6	974.6	971.3	970.7	968.6	974.7	971.3
05:09:50	977.1	976.8	976.7	976.5	974.7	971.3	970.7	968.5	974.7	971.3
05:10:00	977.0	976.7	976.7	976.5	974.6	971.2	970.7	968.6	974.7	971.2
05:10:10	977.1	976.8	976.8	976.6	974.6	971.3	970.7	968.6	974.7	971.3
05:10:20	977.1	976.8	976.7	976.6	974.7	971.3	970.7	968.7	974.7	971.3
05:10:30	977.1	976.7	976.8	976.6	974.7	971.2	970.7	968.6	974.7	971.2
05:10:40	977.1	976.7	976.7	976.6	974.6	971.3	970.7	968.5	974.7	971.3
05:10:50	977.1	976.7	976.7	976.5	974.7	971.2	970.7	968.5	974.7	971.2
05:11:00	977.1	976.8	976.7	976.6	974.7	971.3	970.7	968.7	974.7	971.3
05:11:10	977.0	976.8	976.7	976.6	974.7	971.3	970.7	968.6	974.7	971.3
05:11:20	977.1	976.7	976.7	976.5	974.6	971.3	970.7	968.6	974.7	971.3
05:11:30	977.1	976.7	976.8	976.5	974.7	971.3	970.7	968.6	974.7	971.3
05:11:40	977.1	976.8	976.8	976.6	974.7	971.3	970.7	968.7	974.8	971.3
05:11:50	977.1	976.8	976.8	976.6	974.7	971.3	970.7	968.6	974.8	971.3
05:12:00	977.1	976.8	976.7	976.5	974.7	971.2	970.7	968.6	974.7	971.2
05:12:10	977.1	976.8	976.7	976.6	974.7	971.2	970.7	968.7	974.7	971.2
05:12:20	977.1	976.8	976.8	976.6	974.7	971.3	970.7	968.7	974.8	971.3
05:12:30	977.1	976.8	976.8	976.6	974.7	971.3	970.8	968.7	974.7	971.3
05:12:40	977.1	976.8	976.8	976.7	974.7	971.3	970.8	968.7	974.8	971.3
05:12:50	977.0	976.8	976.8	976.6	974.7	971.3	970.7	968.6	974.8	971.3
05:13:00	977.1	976.8	976.8	976.6	974.7	971.3	970.7	968.6	974.8	971.3
05:13:10	977.1	976.7	976.8	976.6	974.7	971.3	970.7	968.7	974.8	971.3
05:13:20	977.1	976.8	976.8	976.7	974.7	971.3	970.8	968.7	974.8	971.3
05:13:30	977.0	976.8	976.8	976.6	974.7	971.3	970.8	968.7	974.8	971.3
05:13:40	977.1	976.8	976.8	976.6	974.7	971.3	970.8	968.7	974.8	971.3
05:13:50	977.1	976.8	976.8	976.7	974.7	971.3	970.8	968.7	974.7	971.3
05:14:00	977.2	976.8	976.8	976.6	974.7	971.3	970.8	968.7	974.7	971.3
05:14:10	977.1	976.8	976.8	976.6	974.8	971.3	970.8	968.7	974.8	971.3
05:14:20	977.1	976.8	976.7	976.5	974.8	971.3	970.8	968.8	974.7	971.3
05:14:30	977.0	976.8	976.8	976.6	974.7	971.3	970.8	968.8	974.7	971.3
05:14:40	977.0	976.8	976.7	976.6	974.7	971.3	970.7	968.7	974.7	971.3
05:14:50	977.0	976.8	976.8	976.6	974.7	971.3	970.8	968.7	974.7	971.3
05:15:00	977.1	976.8	976.8	976.7	974.8	971.3	970.8	968.8	974.8	971.3
05:15:10	977.1	976.8	976.8	976.6	974.8	971.3	970.8	968.8	974.8	971.3
05:15:20	977.1	976.8	976.8	976.6	974.7	971.3	970.8	968.7	974.8	971.3
05:15:30	977.1	976.8	976.8	976.6	974.8	971.3	970.7	968.8	974.8	971.3
05:15:40	977.1	976.8	976.8	976.6	974.8	971.3	970.7	968.7	974.8	971.3
05:15:50	977.2	976.8	976.8	976.6	974.8	971.3	970.8	968.8	974.9	971.3
05:16:00	977.1	976.8	976.8	976.6	974.8	971.3	970.8	968.8	974.8	971.3
05:16:10	977.1	976.8	976.8	976.6	974.8	971.3	970.8	968.8	974.9	971.3
05:16:20	977.0	976.7	976.8	976.6	974.7	971.2	970.7	968.8	974.8	971.2
05:16:30	977.1	976.9	976.8	976.7	974.8	971.3	970.8	968.8	974.8	971.3
05:16:40	977.1	976.8	976.8	976.6	974.8	971.3	970.8	968.8	974.9	971.3
05:16:50	977.1	976.8	976.8	976.6	974.9	971.3	970.8	968.8	974.9	971.3
05:17:00	977.1	976.8	976.8	976.6	974.8	971.3	970.8	968.7	974.8	971.3
05:17:10	977.1	976.8	976.8	976.6	974.8	971.3	970.8	968.8	974.9	971.3
05:17:20	977.1	976.8	976.9	976.6	974.8	971.3	970.8	968.8	974.9	971.3
05:17:30	977.0	976.7	976.8	976.6	974.8	971.3	970.8	968.8	974.8	971.3
05:17:40	977.1	976.8	976.8	976.6	974.8	971.3	970.8	968.8	974.9	971.3
05:17:50	977.2	976.8	976.8	976.6	974.8	971.3	970.8	968.8	974.8	971.3
05:18:00	977.1	976.8	976.8	976.6	974.8	971.4	970.8	968.9	974.8	971.4
05:18:10	977.1	976.8	976.8	976.7	974.8	971.4	970.8	968.8	974.8	971.4
05:18:20	977.1	976.8	976.9	976.7	974.8	971.4	970.8	968.8	974.8	971.4
05:18:30	977.0	976.8	976.8	976.6	974.8	971.3	970.8	968.8	974.8	971.3
05:18:40	977.1	976.8	976.8	976.7	974.8	971.3	970.8	968.8	974.8	971.3
05:18:50	977.1	976.8	976.8	976.7	974.8	971.4	970.8	968.9	974.9	971.4
05:19:00	977.1	976.8	976.8	976.7	974.8	971.3	970.8	968.8	974.8	971.3
05:19:10	977.1	976.8	976.9	976.6	974.8	971.3	970.8	968.8	974.9	971.3
05:19:20	977.0	976.8	976.8	976.7	974.8	971.3	970.8	968.8	974.8	971.3
05:19:30	977.1	976.8	976.8	976.7	974.8	971.4	970.8	968.9	974.8	971.4
05:19:40	977.2	976.8	976.9	976.7	974.9	971.4	970.9	968.9	974.9	971.4
05:19:50	977.1	976.8	976.9	976.7	974.9	971.4	970.9	968.9	974.9	971.4
05:20:00	977.1	976.8	976.9	976.7	974.8	971.4	970.9	968.9	974.8	971.4
05:20:10	977.2	976.8	976.9	976.7	974.9	971.4	970.8	968.9	974.9	971.4
05:20:20	977.1	976.8	976.9	976.7	974.9	971.4	970.8	968.9	974.8	971.4
05:20:30	977.1	976.8	976.9	976.7	974.8	971.4	970.9	968.9	974.9	971.4



Furnace ID: Furnace 1

Survey Start Date: 24-9-06

Survey Start Time: 08:40:00

Technician: John Doe

Survey Measurements

Thermocouple (1-10) and Logger (1-10) Correction Factors applied

Set Point 3 (970.0°C) Tolerance ±10.0°C Survey Time 00:31:20 hh:mm:ss

No overshoot occurred (Maximum 977.4°C)

Time (hh:mm:ss)	#1 (°C)	#2 (°C)	#3 (°C)	#4 (°C)	#5 (°C)	#6 (°C)	#7 (°C)	#8 (°C)	#9 (°C)	#10 (°C)
05:20:40	977.2	976.9	976.9	976.7	974.9	971.4	970.9	969.0	974.9	971.4
05:20:50	977.2	976.8	976.9	976.7	975.0	971.4	970.9	968.9	974.9	971.4
05:21:00	977.2	976.8	976.9	976.7	974.9	971.4	970.9	968.9	974.9	971.4
05:21:10	977.2	976.9	976.9	976.7	974.9	971.4	970.9	968.9	974.9	971.4
05:21:20	977.1	976.8	976.8	976.7	974.9	971.4	970.9	968.9	974.9	971.4
05:21:30	977.1	976.8	976.9	976.7	974.9	971.4	970.9	968.9	974.9	971.4
05:21:40	977.1	976.8	976.9	976.8	974.9	971.4	970.9	968.9	974.9	971.4
05:21:50	977.2	976.8	976.9	976.8	974.9	971.4	970.9	968.9	974.9	971.4
05:22:00	977.2	976.8	976.9	976.8	974.9	971.3	970.9	968.9	975.0	971.3
05:22:10	977.2	976.9	976.9	976.7	974.9	971.4	970.9	968.9	974.9	971.4
05:22:20	977.2	976.8	976.9	976.8	974.9	971.4	970.9	968.9	974.9	971.4
05:22:30	977.2	976.8	976.8	976.7	974.9	971.4	970.9	968.9	974.9	971.4
05:22:40	977.2	976.9	976.9	976.7	974.9	971.4	970.9	969.0	975.0	971.4
05:22:50	977.2	976.8	976.9	976.7	974.9	971.5	970.9	968.9	974.9	971.5
05:23:00	977.2	976.8	976.9	976.7	974.9	971.4	970.9	968.9	974.9	971.4
05:23:10	977.2	976.8	976.9	976.7	975.0	971.5	970.9	969.0	974.9	971.5
05:23:20	977.2	976.8	976.9	976.7	974.9	971.4	970.9	969.0	974.9	971.4
05:23:30	977.2	976.8	976.9	976.8	974.9	971.4	970.9	968.9	974.9	971.4
05:23:40	977.2	976.9	976.9	976.8	974.9	971.4	970.9	969.0	974.9	971.4
05:23:50	977.2	976.8	976.9	976.7	975.0	971.4	970.9	968.9	974.9	971.4
05:24:00	977.1	976.8	976.9	976.8	974.9	971.4	970.9	968.9	974.9	971.4
05:24:10	977.2	976.9	976.9	976.8	975.0	971.5	970.9	969.0	974.9	971.5
05:24:20	977.1	976.8	976.9	976.8	974.9	971.4	970.9	969.0	974.9	971.4
05:24:30	977.1	976.8	976.9	976.7	975.0	971.4	970.9	969.0	974.9	971.4
05:24:40	977.2	976.8	976.9	976.8	974.9	971.4	970.9	969.0	975.0	971.4
05:24:50	977.1	976.8	976.9	976.7	974.9	971.4	970.9	968.9	974.9	971.4
05:25:00	977.1	976.8	976.9	976.7	974.9	971.4	970.9	969.0	974.9	971.4
05:25:10	977.2	976.8	976.9	976.7	975.0	971.4	970.9	969.0	975.0	971.4
05:25:20	977.2	976.8	976.9	976.8	974.9	971.5	970.9	969.1	974.9	971.5
05:25:30	977.2	976.9	976.9	976.7	975.0	971.4	970.9	969.1	974.9	971.4
05:25:40	977.2	976.9	976.9	976.7	975.0	971.4	970.9	969.0	975.1	971.4
05:25:50	977.2	976.8	976.9	976.7	975.0	971.4	970.9	969.0	974.9	971.4
05:26:00	977.0	976.8	976.8	976.7	975.0	971.4	970.9	969.1	974.9	971.4
05:26:10	977.1	976.8	976.9	976.7	974.9	971.4	970.9	969.0	974.9	971.4
05:26:20	977.0	976.8	976.8	976.7	974.9	971.3	970.8	969.0	974.9	971.3
05:26:30	977.1	976.9	976.9	976.8	975.0	971.4	970.9	969.0	974.9	971.4
05:26:40	977.1	976.8	976.9	976.8	975.0	971.5	970.9	969.0	975.0	971.5
05:26:50	977.1	976.8	976.9	976.8	974.9	971.4	970.9	969.0	974.9	971.4
05:27:00	977.1	976.9	976.9	976.8	974.9	971.4	970.9	969.0	974.9	971.4
05:27:10	977.1	976.8	976.9	976.7	974.9	971.4	970.9	969.0	974.9	971.4
05:27:20	977.1	976.8	976.9	976.7	975.0	971.4	970.9	969.0	974.8	971.4
05:27:30	977.1	976.8	976.9	976.8	974.9	971.4	970.9	969.0	974.8	971.4
05:27:40	977.0	976.7	976.8	976.7	974.9	971.4	970.9	969.0	974.9	971.4
05:27:50	977.1	976.8	976.9	976.7	975.0	971.4	971.0	969.1	974.9	971.4
05:28:00	977.1	976.8	976.9	976.8	975.0	971.4	971.0	969.1	974.9	971.4
05:28:10	977.1	976.8	976.9	976.8	975.0	971.4	970.9	969.0	974.9	971.4
05:28:20	977.1	976.8	976.8	976.8	975.0	971.4	970.9	969.0	974.8	971.4
05:28:30	977.2	976.9	976.9	976.8	975.0	971.4	971.0	969.1	974.9	971.4
05:28:40	977.1	976.8	976.9	976.8	975.0	971.4	971.0	969.0	974.9	971.4
05:28:50	977.0	976.8	976.8	976.8	975.0	971.4	970.9	969.0	974.9	971.4
05:29:00	977.2	976.8	976.9	976.8	975.0	971.4	970.9	969.1	974.9	971.4
05:29:10	977.1	976.8	976.9	976.8	975.0	971.4	970.9	969.2	974.9	971.4
05:29:20	977.1	976.8	976.9	976.7	975.0	971.5	970.9	969.1	974.9	971.5
05:29:30	977.1	976.8	976.9	976.8	975.0	971.4	971.0	969.1	975.0	971.4
05:29:40	977.2	976.9	976.9	976.7	975.1	971.4	970.9	969.1	974.9	971.4
05:29:50	977.1	976.9	976.9	976.8	975.0	971.5	971.0	969.0	974.9	971.5
05:30:00	977.1	976.8	976.9	976.7	975.0	971.5	971.0	969.0	974.9	971.5
05:30:10	977.1	976.9	976.9	976.8	975.0	971.5	971.0	969.1	974.9	971.5
05:30:20	977.2	976.8	976.9	976.8	975.0	971.5	970.9	969.1	974.9	971.5
05:30:30	977.2	976.9	977.0	976.9	975.1	971.5	971.1	969.2	975.1	971.5
05:30:40	977.2	976.9	977.0	976.8	975.1	971.5	971.0	969.1	975.0	971.5
05:30:50	977.2	976.9	977.0	976.9	975.1	971.5	971.1	969.2	975.1	971.5
05:31:00	977.2	977.0	977.0	976.8	975.1	971.6	971.2	969.2	975.1	971.6
05:31:10	977.3	976.9	977.0	976.9	975.1	971.6	971.2	969.2	975.1	971.6
05:31:20	977.3	977.0	977.1	976.9	975.1	971.6	971.2	969.2	975.1	971.6
05:31:30	977.3	977.0	977.1	976.9	975.1	971.6	971.1	969.2	975.1	971.6
05:31:40	977.3	977.0	977.0	976.9	975.1	971.6	971.1	969.2	975.1	971.6
05:31:50	977.3	977.0	977.0	976.9	975.1	971.6	971.2	969.2	975.2	971.6
05:32:00	977.3	977.0	977.1	976.9	975.2	971.6	971.2	969.2	975.2	971.6
05:32:10	977.3	977.1	977.1	976.9	975.1	971.6	971.2	969.3	975.2	971.6
05:32:20	977.3	977.1	977.1	976.9	975.1	971.6	971.2	969.2	975.2	971.6
05:32:30	977.4	977.1	977.1	976.9	975.2	971.7	971.3	969.3	975.2	971.7
05:32:40	977.4	977.0	977.1	976.9	975.1	971.7	971.3	969.2	975.2	971.7
05:32:50	977.4	977.1	977.1	976.9	975.2	971.7	971.3	969.3	975.2	971.7
05:33:00	977.4	977.1	977.1	977.0	975.2	971.7	971.3	969.3	975.2	971.7
05:33:10	977.4	977.1	977.2	977.0	975.2	971.8	971.3	969.4	975.3	971.8
05:33:20	977.4	977.2	977.2	977.0	975.3	971.8	971.3	969.4	975.3	971.8
05:33:30	977.4	977.1	977.2	977.0	975.2	971.7	971.2	969.3	975.2	971.7
05:33:40	977.4	977.1	977.2	977.0	975.2	971.6	971.3	969.4	975.3	971.6
05:33:50	977.4	977.1	977.2	977.0	975.2	971.7	971.3	969.4	975.3	971.7
05:34:00	977.4	977.1	977.2	977.0	975.2	971.7	971.3	969.4	975.3	971.7
05:34:10	977.4	977.1	977.2	977.0	975.2	971.7	971.3	969.4	975.3	971.7
05:34:20	977.4	977.1	977.2	977.0	975.3	971.7	971.3	969.4	975.3	971.7
05:34:30	977.4	977.1	977.1	977.0	975.2	971.7	971.2	969.3	975.2	971.7



Furnace ID: Furnace 1

Survey Start Date: 24-9-06

Survey Start Time: 08:40:00

Technician: John Doe

Thermocouple Correction Factors

Calibration Details

Calibrated by: Joes TC shop
 Thermocouple Type: K
 Spool / Batch Number: 2458
 Calibration Date: 22-8-06
 Probes Calibrated: 1-10

Notes

MI probes

Calibration Point (°C)	Reading		Correction		
	Spool Start	Spool End	Spool Start	Spool End	Average
500.00	501.00	501.00	-1.00	-1.00	-1.00
750.00	749.00	749.50	1.00	0.50	0.75
1000.00	1000.00	1000.00	0.00	0.00	0.00
1200.00	1202.00	1201.00	-2.00	-1.00	-1.50

Logger Correction Factors

Calibration Details

Logger ID: 3214
 Calibration Certificate Number: 56789
 Calibration Expires On: 04-7-07
 Thermocouple Type: N
 Probes Calibrated: 1-10

Notes

These are notes on the logger correction factors

Set Point (°C)	Readings									
	1	2	3	4	5	6	7	8	9	10
100.0	100.0	100.0	100.0	100.0	100.0	100.0	100.0	100.0	100.0	100.0
200.0	200.0	200.0	200.0	200.0	200.0	200.0	200.0	200.0	200.0	200.0
400.0	400.0	400.0	400.0	400.0	400.0	400.0	400.0	400.0	400.0	400.0
600.0	600.0	600.0	600.0	600.0	600.0	600.0	600.0	600.0	600.0	600.0
800.0	800.0	800.0	800.0	800.0	800.0	800.0	800.0	800.0	800.0	800.0
1000.0	1000.0	1000.0	1000.0	1000.0	1000.0	1000.0	1000.0	1000.0	1000.0	1000.0
1200.0	1200.0	1200.0	1200.0	1200.0	1200.0	1200.0	1200.0	1200.0	1200.0	1200.0

Set Point (°C)	Correction									
	1	2	3	4	5	6	7	8	9	10
100.0	0.0	0.0	0.0	0.0	0.0	0.0	0.0	0.0	0.0	0.0
200.0	0.0	0.0	0.0	0.0	0.0	0.0	0.0	0.0	0.0	0.0
400.0	0.0	0.0	0.0	0.0	0.0	0.0	0.0	0.0	0.0	0.0
600.0	0.0	0.0	0.0	0.0	0.0	0.0	0.0	0.0	0.0	0.0
800.0	0.0	0.0	0.0	0.0	0.0	0.0	0.0	0.0	0.0	0.0
1000.0	0.0	0.0	0.0	0.0	0.0	0.0	0.0	0.0	0.0	0.0
1200.0	0.0	0.0	0.0	0.0	0.0	0.0	0.0	0.0	0.0	0.0

Audit Trail

No.	Date/Time	Description
1	22-9-06 15:40:16	Paqfile created by importing measurements from an external source.
2	22-9-06 15:56:45	Thermocouple Correction Factors applied (C:\Program Files\Datapaq Development softw are\Furnace Survey\Furnace Survey\Paqfiles\10 point survey.cal).
3		Thermocouple Correction Factors have been edited since originally setup.
4	22-9-06 15:56:45	Logger Correction Factors applied (C:\Program Files\Datapaq Development softw are\Furnace Survey\Furnace Survey\Paqfiles\logger test correction factors.lcf).