

# **DATAPAQ<sup>®</sup> EasyTrack<sup>®</sup> 3**

Profile Your Oven the Easy Way



# DATAPAQ the name of temperature profiling

Since 1984, the name DATAPAQ has become synonymous with temperature profiling in the paint and powder coatings industry worldwide. DATAPAQ is the preferred choice in the market and continues to provide systems that exceed the demands of the harshest of thermal processes.

## DATAPAQ EasyTrack3 ... Easy, Efficient, Economic



DATAPAQ ET6063  
6 channel

DATAPAQ ET4043  
4 channel

DATAPAQ EasyTrack3 is the latest generation of Oven Tracker systems in the EasyTrack family. Built on the pedigree of EasyTrack & EasyTrack2, the new system continues to provide the market with the easiest, robust, powerful oven profiling tool available to custom coaters, OEM operations or coating suppliers alike.

- **Quality:** Prove that your oven process meets the coating cure specification (time at temperature) to give the product quality you and your customers demand (minimize rejects, rework & prevent product recalls).
- **Productivity:** Identify when and why cure problems occur. Isolate the root cause in the oven and use profile data to quickly recommend corrective action. Minimize downtime and lost production revenue. Eliminate risk of missed customer delivery schedules.
- **Validation and Certification:** Provide the documentary proof to both customers and regulatory bodies (Qualicoat, Accredited Applicator Status etc) that your operation meets quality standards. Win new business with the added value of full process certification.
- **Efficiency:** Setup and validate new oven processes, coatings and products quickly and efficiently. Make accurate process adjustments (line speed, zone set-point temperatures) to enhance productivity and reduce energy costs.

Send the DATAPAQ EasyTrack3 system through your oven and measure the product and oven temperature to guarantee that the correct time at temperature is achieved to give you the correct thermal coating cure.

Listening to our global EasyTrack customers' needs, we introduce the new DATAPAQ ET3 datalogger, which offers even more choice and value.

- Auto logger detect
- More memory
- On-board calibration data
- Remote service diagnostics tool
- Improved battery performance
- Slope markers
- Auto software language change

We understand that each customer and process has its own specific needs, so we have added a new DATAPAQ EasyTrack3 Professional system for customers that wish to expand their oven monitoring capabilities.

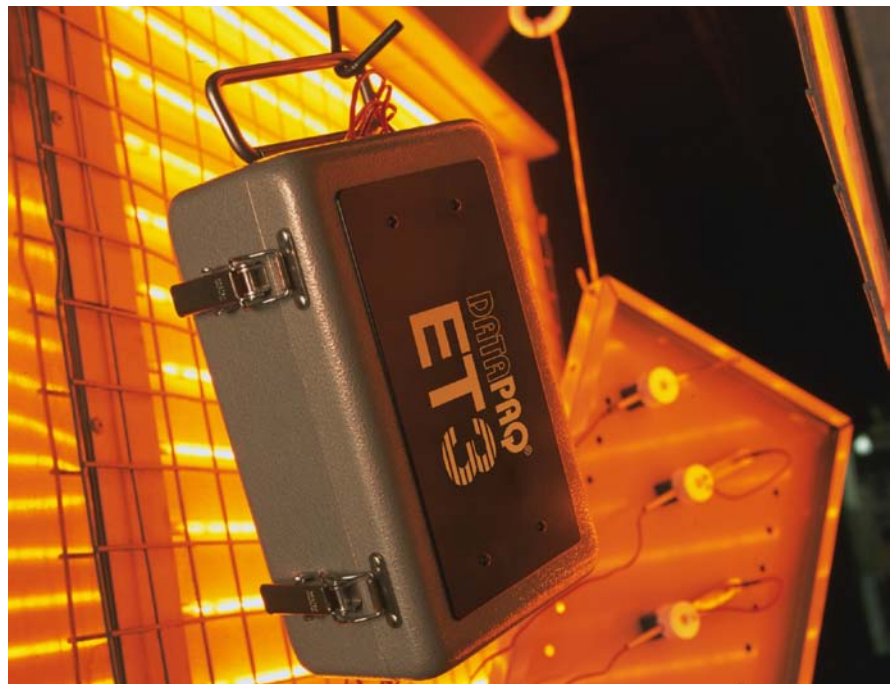
**MultiRun mode** – perform up to 3 separate runs before returning to PC

**SmartPaq** – for simple runs “pass” or “fail” indication at oven exit direct from logger

**Enhanced barrier performance**

**Professional support pack** – includes carry bag, probe clamp kit, probe ID tags

**DATAPAQ EasyTrack Professional Software** – Enhanced analysis and reporting package





# Maximize the Full Potential of Your Paint or Powder Coating Operation

## 1. Easy Interpretation of Profile Data

Convert raw data into meaningful process information using either DATAPAQ EasyTrack or DATAPAQ EasyTrack Professional software. Easy-to-use but provides the power to make intelligent, confident decisions, using the industry accepted index cure analysis tool (DATAPAQ Value). Share your findings easily with either printed or digital media. Switch languages on the fly in one installation.

## 2. Economic Efficient Battery Power

Single user-replaceable with locally sourced 9V battery. Battery life optimization through intelligent power management and auto power down. USB logger powering on reset & download (50 x 1 hour runs).

## 3. Full Certification for Regulatory Compliance

DATAPAQ EasyTrack3 calibration certificate stored on-board allowing full traceability of equipment and each run to the last calibration data.

## 4. Multiple Run Efficiency

Perform MultiRun\*, allowing up to 3 sequential separate runs without need to download between ovens, saving time and effort. Download each run as a separate result file.

## 5. PC-free Run "Pass/Fail" at Oven Exit

Without need to download data, see if the profile has passed your cure targets (time at temperature) direct from the logger using SmartPaq\*. It is as simple as a green light indicating "pass" and red for "fail", without risk of a damaged LCD.

## 6. Robust Industrial Tool you Demand

Cold touch polycarbonate case designed to take knocks in the plant withstanding up to 100°C (212°F) without damage or distortion. Coated electronics to eliminate moisture damage even in humid working environments.

## 7. Detailed Secure Profile Data

Non-volatile memory, allowing up to 2.5 hours of profile runs with a sample interval of 0.5s, giving the resolution you need to make confident decisions. No risk of data loss even after battery replacement.

## 8. Safe Transportation

Magnetic probes attach to barrier top plate for ease and safety when handling.

## 9. Thermocouples Designed for Purpose

Comprehensive range designed for accuracy, ease-of-use and durability for your industrial applications. Measure with confidence. Specified to (ANSI MC96.1 ±0.4% or ±1.1°C [2.0°F])

## 10. Measurement Accuracy Given

Cold junction compensation guarantees logger accuracy over entire logger operating range up to 85°C (185°F). Accuracy guaranteed from start to finish of a run or day.

## 11. Safe Passage Through Oven

Lockable handle ensuring secure hanging on paint line. Lockable barrier clips eliminate risk of lid loss even when accidents happen.

## 12. Protection Back-Up

Heatsink phase change provides optimal thermal protection when you need it. Logger auto-shutdown above 85°C (185°F) to prevent damage or risk of inaccurate data collection.

## 13. System Choice

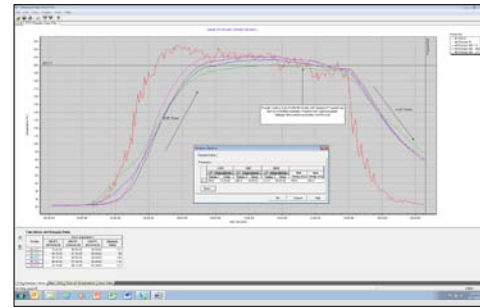
Choose a 4 or 6 channel system to match process and budget (Standard, Advanced & Professional).

## 14. Thermal Performance You Can Trust

Protect your logger run after run with confidence. TB0263 barrier provides up to 3 hours\* protection at 200°C (392°F), yet only 3.7 kg (8.2 lbs), making use and transport easy and safe.

## 15. Operational Simplicity for a Paint Line

Running a profile is as simple as press "green" to start and "red" to stop, and any line operator can use it with ease and without risk.



DATAPAQ EasyTrack Insight software



DATAPAQ EasyTrack3 system



DATAPAQ ET3 SmartPaq\*



Thermal barrier DATAPAQ TB0263\*



DATAPAQ EasyTrack3 system with standard TB0253 thermal barrier

\*Available with DATAPAQ EasyTrack3 Professional system only.

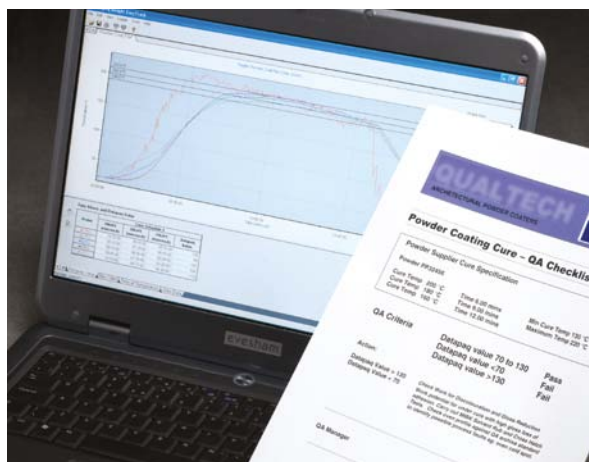
# More Choice from the DATAPAQ EasyTrack3 Range

Simply choose the system that best meets your own oven profiling needs and budget.

System option	Application / use	DATAPAQ Insight software	Logger	Thermal barrier	Probes	Miscellaneous
<b>Standard</b>	Budget option for general paint and powder	EasyTrack	For all system options: DATAPAQ ET4043 (4 channels) or DATAPAQ ET6063 (6 channels)	DATAPAQ TB0253 2 hrs @ 200 °C (392 °F)	Exposed/patch	–
<b>Advanced</b>	Regular basic use for general paint & powder	EasyTrack		DATAPAQ TB0253 2 hrs @ 200 °C (392 °F)	Clip or magnet	–
<b>Professional</b>	Frequent high use with multiple ovens for paint suppliers or general paint and powder. Added analysis & reporting power.	EasyTrack Professional		DATAPAQ TB0263 3 hrs @ 200 °C (392 °F)	Exposed, clip or magnet	Carry bag ID tags probe clamp
<b>High temp</b>	High temperature coatings – PTFE or Dacromet	EasyTrack or EasyTrack Professional		DATAPAQ TB5000-HT 1.5 hrs @ 400 °C (752 °F)	Exposed HiTemp glass fiber	–
<b>Low height</b>	Applications where space is limited and/or oven height is restricted	EasyTrack or EasyTrack Professional		DATAPAQ TB2037 31 mm (1.2 in) high 13 mins @ 200 °C (392 °F)	Exposed/patch, clip or magnet	–

## DATAPAQ EasyTrack3 Applications

- Custom coaters “job shops”
- Coating suppliers
- Oven manufacturers
- General industrial
- Automotive component supply
- Architectural coating
- Textile coating
- Wood coating
- Consumer goods
- Domestic appliance
- Metal packaging
- High temperature coating
- Specialty coatings



## The DATAPAQ Guarantee

Each DATAPAQ system is supported with a full one year warranty. Complementing the warranty, we offer a yearly service and recalibration contract, which includes free software updates and loaner logger for guaranteed peace of mind (dependent on country).

## Fluke Process Instruments

### EMEA

Cambridge, UK  
Tel: +44 1223 652 400  
sales@flukeprocessinstruments.co.uk

### Americas

Salem, NH USA  
Tel: +1 425 446 6780  
sales@flukeprocessinstruments.com

### China

Beijing, China  
Tel: +86 10 6438 4691  
sales@flukeprocessinstruments.com.cn

### Asia East and South

India Tel: +91 22 2920 7691  
Singapore Tel: +65 6799 5596  
sales.asia@flukeprocessinstruments.com

### Worldwide Service

Fluke Process Instruments offers services, including repair and calibration. For more information, contact your local office.

[www.flukeprocessinstruments.com](http://www.flukeprocessinstruments.com)

© 2019 Fluke Process Instruments  
Specifications subject to change without notice.  
01/2019 OT\_ET3\_BRO\_Rev.A2\_EN