

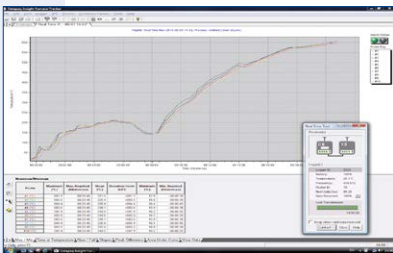
DATAPAQ® TP3 Radio Telemetry System

Real-Time Temperature Data Direct from Inside Your Thermal Process

The DATAPAQ TP3 radio telemetry system utilizes the latest radio-frequency technology to allow data transmission from the data logger in real time. As the DATAPAQ system travels through the process, product and process temperature data can be viewed, analyzed and reported instantaneously. This technology can be applied to monitoring key thermal processes in most industrial heating applications.



DATAPAQ TP3 RF system



Real time data capture



TM21 primary receiver Kit

SYSTEM FEATURES

- System can be tailored to meet your specific process requirements:
 - Batch process(es) – simple primary receiver kit
 - Demanding conveyorized processes – primary receiver complemented with add-on modular secondary receivers
- Automatic frequency selection from software, minimizing interference and maximizing signal quality
- Intelligent listen-before-transmit feature enables the system to operate with multiple loggers on the same transmitting frequency and data collection with one installation of DATAPAQ Insight™ software
- Receivers connected in series with low-loss RS485 digital communications bus, maximizing data reception
- Comprehensive on screen, real time system diagnostics reporting signal status for each transmitting logger and receiver
- Transmission performance optimized for high-temperature operation with internal self-calibration routines
- Ultra low power consumption extends battery life and operating life
- In-logger data storage backs up transmitted data, ensuring integrity of data

FEATURES AND BENEFITS

- **Rapid QA** – know that your product has been thermally processed to specification before the DATAPAQ system has even exited the process
- **Improve the productivity of any batch process** – know when critical product temperature has been achieved and allow the process to be completed or moved on to the next phase; optimize cycle times with confidence
- **Rapid fault-finding** – see immediately when process problems are being experienced without having to wait until the completion of the process; allow corrective action earlier, saving time and reducing possible scrap
- **Improve efficiency of process optimization** – use live data to view the effect of any process-parameter changes on the temperature profile instantly

TECHNICAL SPECIFICATIONS



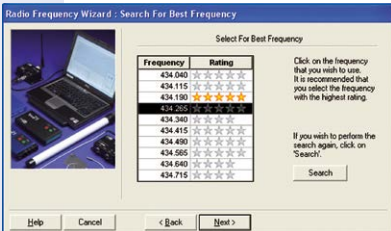
DATAPAQ TP3 data loggers



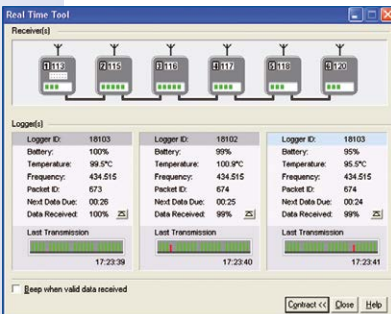
Primary receiver



High gain antenna



Frequency scanner



Multiple receivers in series

Fluke Process Instruments

EMEA
Cambridge, UK
Tel: +44 1223 652 400
sales@flukeprocessinstruments.co.uk

Americas
Derry, NH USA
Tel: +1 603 537 2680
sales@flukeprocessinstruments.com

China
Beijing, China
Tel: +86 10 6438 4691
sales@flukeprocessinstruments.com.cn

Asia East and South
India Tel: +91 22 2920 7691
Singapore Tel: +65 6799 5596
sales.asia@flukeprocessinstruments.com

Worldwide Service
Fluke Process Instruments offers services, including repair and calibration. For more information, contact your local office.

www.flukeprocessinstruments.com

© 2016 Fluke Process Instruments
Specifications subject to change without notice.
9/2016_DS_FT_TP3 RFT, Rev. B



TM21 TRANSMITTER (TX1401)

Transmitter fitted inside data logger

DATAPAQ TP3 logger range	10 or 20 channels, type K, N, R, S, B 70 °C & 110 °C (158 °F to 230 °F)	
Operation frequency ranges*	Europe/China	434.065–434.740 MHz
	USA/Canada	463.525–463.975 MHz
	Japan	429.275–429.725 MHz
Operating temperature range	–20 °C to 110 °C / –4 °F to 230 °F	
Transmission range	200 m (656 ft) “in open field conditions”	
Max number of transmitters per system	6	
Sampling interval range	0.3 sec to 10 min	
Interleaving limits	10	
Approvals*	EU CEPT/ERC/70-03E	Canada RSS-119
	USA FCC CFR 47 Part 90	Taiwan NCC-LP0002
	Japan ARIB STD-T67	China CMIT-2010DJ5117

* Contact DATAPAQ for availability of telemetry/Bluetooth in your country.

TM21 PRIMARY RECEIVER (Euro RX4200, USA RX4100, rest of world RX4000)

Primary receiver with integral USB comms to PC. Powered by CH0070.

Equipped with type N RF connector.

Dimensions (HxWxL)	44 × 139 × 98 mm / 1.7 x 5.5 x 3,9 in
Frequency	To match transmitter
Antenna	Desktop 15 cm
Operating temperature	0 °C to 50 °C / 32 °F to 122 °F
Status display	2 line 16 character backlit LCD

TM21 SECONDARY RECEIVER (Euro RX4201, USA RX4101, Rest of World RX4001)

Secondary receiver connected to the TM21 primary receiver with

RS485 communication cable (10 to 100 m / 32 to 328 ft).

Dimensions (HxWxL)	44 × 139 × 98 mm / 1.7 x 5.5 x 3,9 in
Frequency	To match transmitter
Antenna	Unity gain end feed with type N connector
Operating temperature	0 °C to 50 °C / 32 °F to 122 °F
Status display	Single power and status LED
Maximum quantity	Max 6 secondary connected to 1 primary receiver

INSIGHT™ SOFTWARE

- Automatic intelligent frequency selection and set-up
- Real time tool detailing quality of data transmission for each logger / receiver and system status information
- Live real-time analysis of process data and review against process set-up (zones, temperature set-points, overlays)
- Event markers log events at the precise point they happen on the profile
- Automatic data saving to PC during run to guarantee data protection