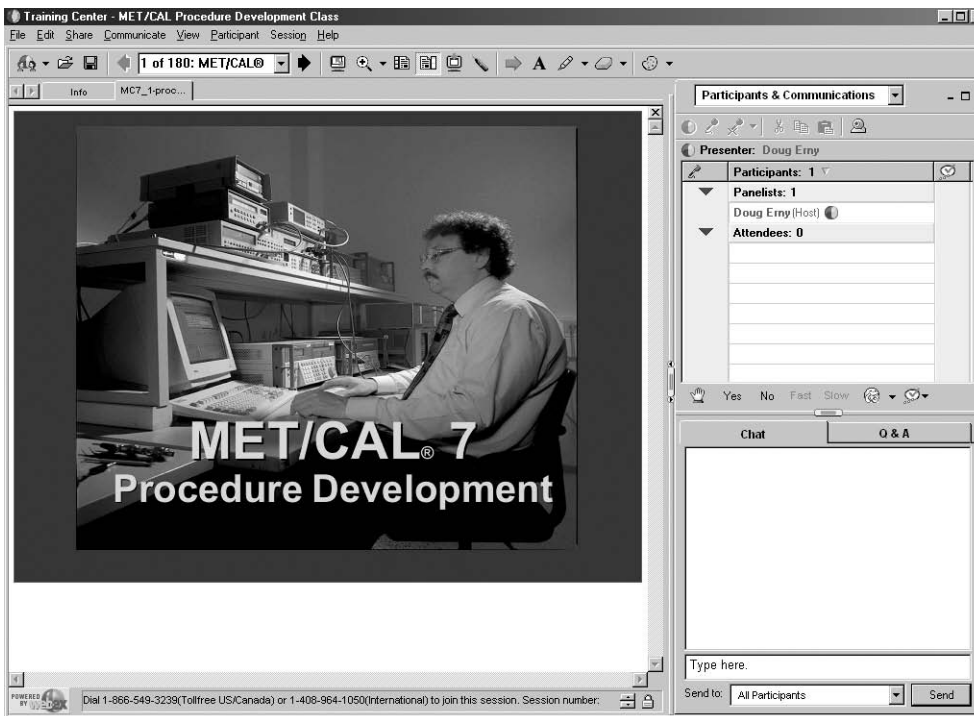


MET/CAL® 7 Procedure Development Web-based training

General Technology Workshops

Learn to create procedures with the latest version of MET/CAL — without leaving your office! Save the cost of travel by signing up for our web-based training course.



Course outline

- Configuring the Run Time
- Using the Editor
- Running procedures
- Learn the use of the Function Select Codes (FSCs)
- Create examples of each FSC

Course schedule

Visit www.calibration.fluke.com and select Training for links to the web-based course schedule.

Who should attend

The MET/CAL Procedure Development course is designed for those who are directly involved in the operation of MET/CAL calibration software and are required to write or modify procedures. Attendees are expected to be familiar with the Microsoft® Windows® 98/2000/NT or XP operating system and are advised to have some hands-on experience with MET/CAL software prior to the class.

Registration

Please complete and submit the on-line registration form at www.calibration.fluke.com (select Training). Once we have received the form, a Fluke training representative will contact you to accept payment. A credit card (Visa, MasterCard or American Express) or P.O. is required to complete the registration. Course confirmation will be sent to the student along with instructions for logging into the training session.

This web workshop is offered to MET/CAL users who need assistance writing procedures but have a limited travel budget. You will become proficient with the latest features and capabilities of the MET/CAL Editor and Run Time applications and will develop an understanding of the Function Select Codes (FSC) used in procedure development. The workshop is presented as a five part, ten-hour course with each two-hour session scheduled on consecutive days.

Each attendee will receive the workbook materials in advance.

Equipment and system requirements of web session

- Computer with Microsoft® Internet Explorer 5.5 or higher
- Computer monitor 17 inches or larger
- Internet connect running DSL or ISDN
- Touch-tone telephone near the computer

You may also call Fluke at (425) 446-6330 to reserve your place in the web-based training class. The training coordinator is happy to review the signup process and answer any questions you may have concerning upcoming schedules, course materials, etc.

Course Information

Course No. TWB 1031
Course Length: Two hours on five consecutive days (10 hours total). Students will be asked to complete exercises outside of the class time for discussion during the following class session. After completing all sessions of the course, attendees will receive a Fluke Certificate of Training. This workshop is not designed to replace the classroom training course and does not present all of the information normally taught in the live, instructor lead MET/CAL classroom.

Cancellation Practice

If you are unable to attend, please notify us as soon as possible. There is no refund for cancellation of your attendance in the web session, however you may have someone else attend in your absence or reschedule into the next available class.

Fluke. *Keeping your world up and running.*

Fluke Corporation
 PO Box 9090, Everett, WA USA 98206

Fluke Europe B.V.
 PO Box 1186, 5602 BD
 Eindhoven, The Netherlands

For more information call:
 In the U.S.A. (800) 443-5853 or
 Fax (425) 446-5116
 In Europe/M-East/Africa (31 40) 2 675 200 or
 Fax (31 40) 2 675 222
 In Canada (800)-36-FLUKE or
 Fax (905) 890-6866
 From other countries +1 (425) 446-5500 or
 Fax +1 (425) 446-5116
 Web access: <http://www.fluke.com>

©2004 Fluke Corporation. All rights reserved.
 MET/CAL is a registered trademark of Fluke Corporation.
 Printed in U.S.A. 9/2004 2393985 D-US-N Rev A