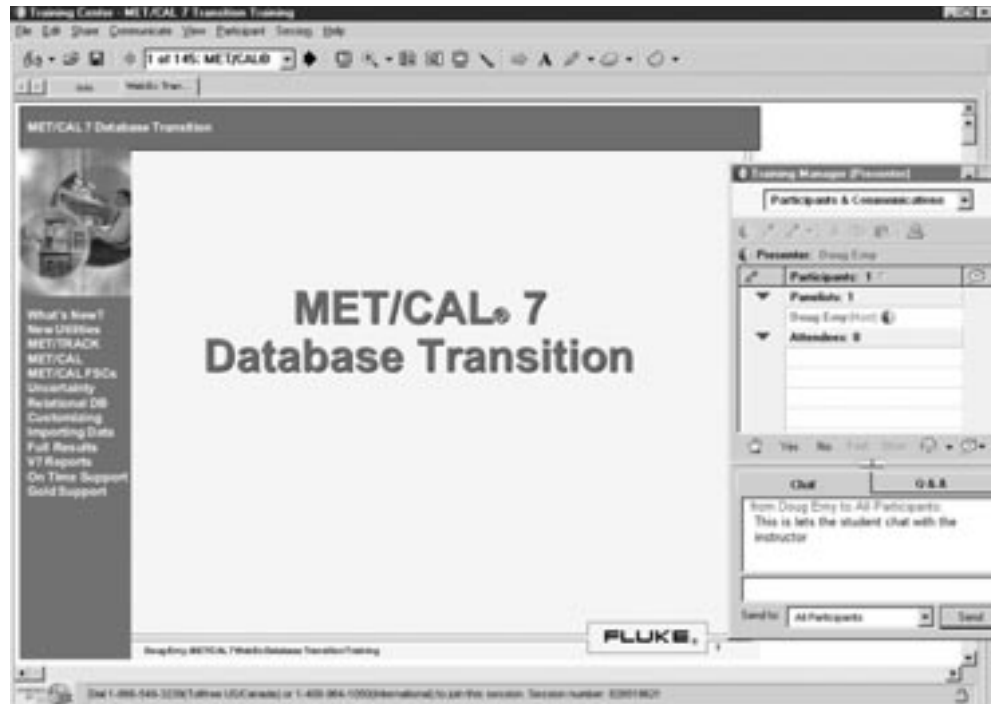


## MET/CAL® 7 Database Transition Web-Based Training

### Technical Data

Learn to use the latest version of MET/CAL® or MET/TRACK® without leaving your office. Save travel costs, travel time and travel expenses by signing up for our Web-Based Training course. Learn from anywhere, as long as you can connect to the internet.

This special web workshop is offered for a limited time to those who are upgrading MET/CAL or MET/TRACK software to Version 7 and want to shorten the learning curve. You will become proficient with the new features and capabilities, including a redesigned MET/TRACK user interface. The workshop is presented as a two-part, four-hour course with each two-hour session scheduled on consecutive days. Each attendee will receive a Computer-Based Training CD-ROM (MET/CAL-CBT7), a \$425.00 value (US dollars), to supplement the web training.



#### Course schedule

August 6, 2003	10 am PST	Part 1
August 7, 2003	10 am PST	Part 2
September 10, 2003	10 am PST	Part 1
September 11, 2003	10 am PST	Part 2
October 8, 2003	10 am PST	Part 1
October 9, 2003	10 am PST	Part 2
November 12, 2003	10 am PST	Part 1
November 13, 2003	10 am PST	Part 2
December 3, 2003	10 am PST	Part 1
December 4, 2003	10 am PST	Part 2

#### Who should attend

Calibration laboratory managers, supervisors and Q/A personnel responsible for managing test equipment, who are familiar with MET/CAL or MET/TRACK Version 6. This class is ideal for MET/CAL users who are upgrading to Version 7 and need to update their skills without the expense of travel.

#### Registration

Please complete and submit the on-line registration form at [www.calibration.fluke.com](http://www.calibration.fluke.com) (select Training). Once we have received the form, a Fluke training representative will contact you to discuss payment terms. A credit card (Visa,

MasterCard or American Express) is required at the time of registration. A course confirmation will be sent to the student along with instructions for logging into the training session and training materials to review prior to the class.

You may also call Fluke Calibration Customer Training at (425) 446-6330 to reserve your place in the web-based training class. The Training Coordinator is happy to review the signup process and answer any questions you may have concerning upcoming schedules and course materials. Since this course is held for a limited time only, we urge you to enroll as early as possible.

### **Course information**

Course No. TWB 1021

Course Length: 2 hours on two consecutive days (4 hours total) After completing both sessions of the course, all attendees will receive a Fluke Certificate of Training.

### **Cancellation policy**

Registration is completed with a credit card (Visa, MasterCard or American Express) through on-line registration, fax or phone. The credit card will be charged immediately upon registration. If you are unable to attend, please notify us as soon as possible. You may have someone else attend in your absence or reschedule into the next available class.

### **Additional calibration training**

Fluke offers a broad range of General Technology Workshops for calibration hardware and software products.

- Principles of Metrology
- Calibration Laboratory Management
- MET/CAL Procedure Writing
- MET/CAL Database and Reports
- Advanced MET/CAL Procedure Writing I
- Advanced MET/CAL Procedure Writing II
- Product Specific Training

**Fluke.** *Keeping your world up and running.*

**Fluke Corporation**

PO Box 9090, Everett, WA USA 98206

**Fluke Europe B.V.**

PO Box 1186, 5602 BD  
Eindhoven, The Netherlands

**For more information call:**

In the U.S.A. (800) 443-5853 or  
Fax (425) 446-5116  
In Europe/M-East/Africa (31 40) 2 675 200 or  
Fax (31 40) 2 675 222  
In Canada (800)-36-FLUKE or  
Fax (905) 890-6866  
From other countries +1 (425) 446-5500 or  
Fax +1 (425) 446-5116  
Web access: <http://www.fluke.com>